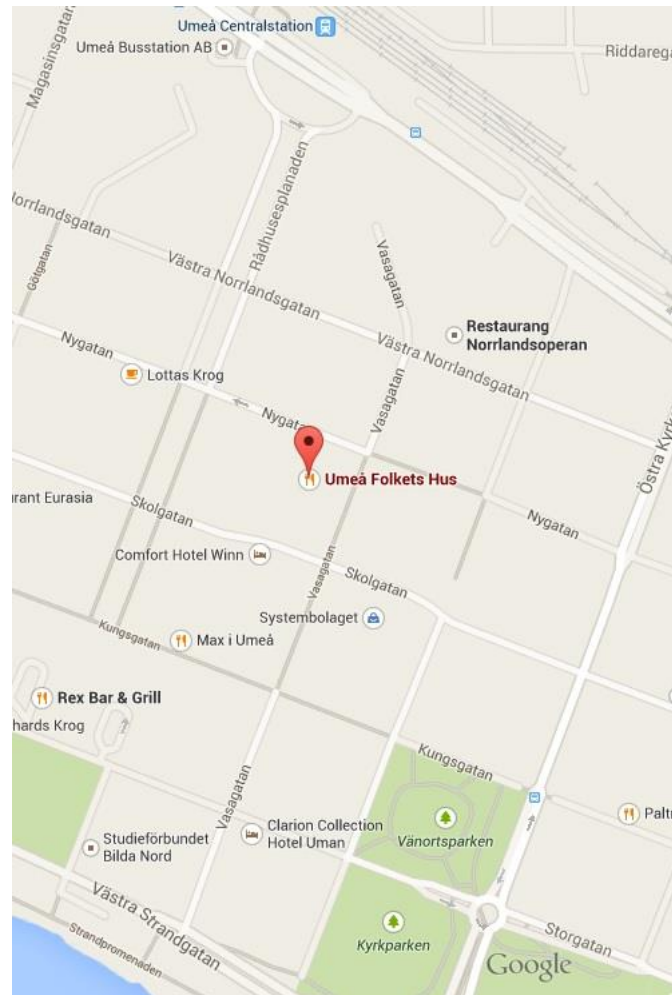


We live in an ordered world where categories, hierarchies and boundaries were constructed to help us to comprehend the complexity of life. Conflicts, creativity and contacts, among others, stimulate historical processes which result in continuous change of established structures, institutions and systems of meaning. Thus, elements of change and reconstruction are crucial for progress. This workshop will address these topics by inviting participants to contribute with innovative thinking about how various actors on various levels and times engaged and shaped these processes. There has been already intellectual engagement with these kind of processes by theorizing the emergence of "monster culture" and the very famous approach of "creative destruction". This will be our starting point to think about concepts, ideas and processes of bordering and the emergence of borderlands.

Jeffrey Jerome Cohen (English philology) has argued that monsters are hybrid creatures marking the edges of conceptual and physical frontiers. He also mentions that the monster's body is a cultural body which incorporates fear, desire, anxiety and fantasy. Furthermore the monster is a first sign (harbinger) of category crisis. Elizabeth De Palma Digeser (History) writes, the monster is visible "difference" and can be understood as an exaggeration of a cultural difference made monstrous. It represents any kind of alterity. The identification of monsters, then, signals that persons in the interior or center perceive at some distance from themselves either a frontier or a borderland region. Digeser continues, "in other words, monsters occupy regions where attributes of ostensibly settled region overlap with attributes of something other." In this context we would like to have a discussion on the border and borderlands of categories, the shifting of categories and their borders as well as on the "objects" which have to fit within the borders or may be located in the borderlands.

We would like to combine this research on monster culture with an approach that derives from economics and the concept of creative destruction but, we hope, it can also be applied innovatively by other disciplines in the project. Creative destruction draws on Joseph Schumpeter's (1883-1950) thinking of economic innovation and business cycles which relies very much on entrepreneurs/entrepreneurship and the re-evaluating of established economic structures and models. Both ideas concern very much the issue of de- and re-bordering in the sense that established categories do not fit new developments and behavior. Thus established structures, borders, boundaries and concepts have to be re-evaluated and re-defined. In this context many borders and boundaries have to be re-drawn.



19.-21.10.2014 - Annual IRTG Conference
Folkets Hus Conference Center
 Skolgatan 59, 903 29 Umeå, Sweden

Conference Organisation:

Alexander Drost, alexander.drost@uni-greifswald.de

Maare Paloheimo, paloheimot@uni-greifswald.de

FOR MORE INFORMATION ON THE IRTG:

Prof. Dr Michael North (E-Mail: north@uni-greifswald.de)

Dr. Alexander Drost (E-Mail: alexander.drost@uni-greifswald.de)

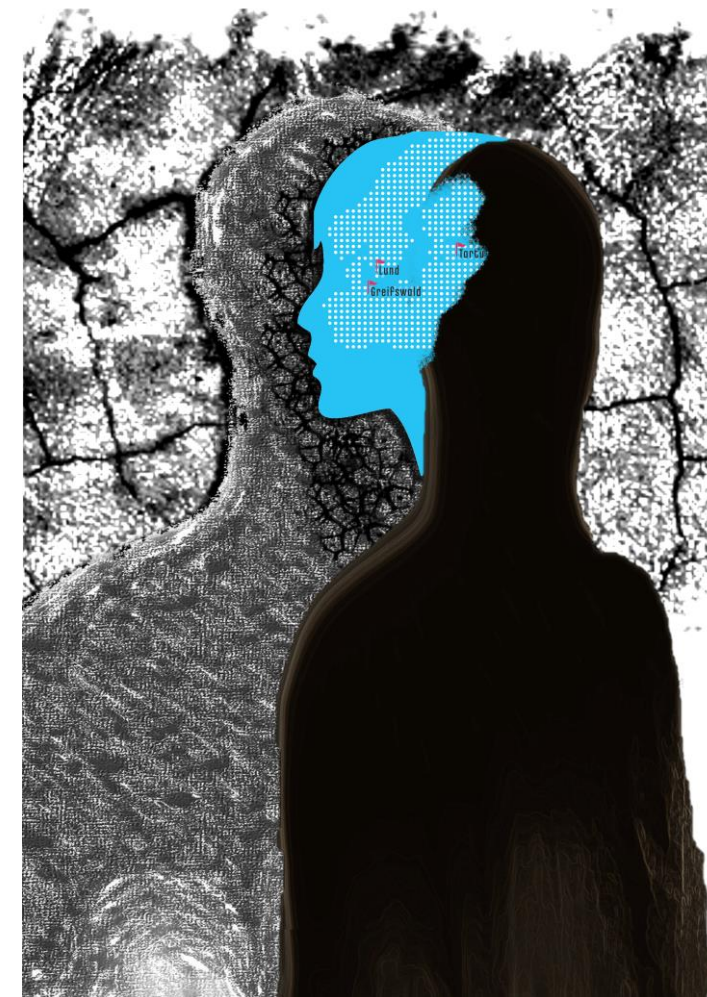
University of Greifswald • Department of History • IRTG „Baltic Borderlands“ • Rubenowstr. 2 • D-17487 Greifswald • Germany

Tel.: +49 (0)3834 86-33 08/-3341 • Fax: +49 (0)3834 86-33 33

www.phil.uni-greifswald.de/fk/borderlands.html

“Bordering the Monster? ‘Creative Destruction’ and De- and Re-Bordering of Established Structures/Borders”

19.-21.10.2014 - Annual IRTG Conference
 Folkets Hus Conference Center, Umeå, Sweden



International Research Training Group 1540/2



funded by the
 (German Research Foundation)

Programme - Annual IRTG Conference

Sunday (October 19th)

19:00 – Dinner Lecture/ Introduction

Monday (October 20th)

09:00 – Key Note I

Samuel Truett (Albuquerque)

Introduction by Michael North (Greifswald)

Globetrotters, border crossers, and the tangled tales of borderlands history

10:00 – Coffee Break

10:15 – Panel I

Collaborative Discussant and Chair

**Barbara Törnquist-Plewa (Lund)/
Alexander Wöll (Greifswald)**

Tatsiana Astrouskaya (Greifswald)

An intellectual as *l' enfant terrible* of Pere-stroika: Re-definition of Belorussian intellectual field in the late 1980s-beginning of 1990s

Marta Grzechnik (Gdańsk/ Greifswald)

Ten centuries of struggling with the monster. The Germans as the “Other” in the post-Second World War Polish historiography

Rune Brandt Larsen (Lund)

Shadows in the East

Sune Bechmann Pedersen (Lund)

Eastern escapes: Selling communist Europe in Scandinavian cold-war guidebooks

12:15 – Lunch

13:15 – Panel II

Collaborative Discussant and Chair

**Barbara Törnquist-Plewa (Lund)/
Alexander Wöll (Greifswald)**

Alberto Sevillano (Greifswald)

The discovery of a *Monstrous Goya* in Germany in early 20th century

Katja Will (Greifswald)

Everybody a man-eater? The Danish film *De grønne slagtere* and the motif of cannibalism

Berit Glanz (Greifswald)

Monstrous patients: Alterity in contemporary Scandinavian novels

Coffee Break

15:45 – Panel III

Discussant and Chair

Jens E. Olesen (Greifswald)

Madis Maasing (Tartu)

Monsters on the border of Christendom: The Russian threat in 16th-Century Livonia

Baiba Tetere (Greifswald)

‘Latvian types’: Hybridized visions of rural life in Latvia in 1890s

Alina Baravykaitė (Greifswald)

How foreign can your native language be?

Toomas Schvak (Tartu)

De- and Re-bordering in 19th century Estonia and Latvia: Orthodox Church and schools as enablers of social changes

19:00 – Joint Dinner

Tuesday (October 21st)

09:00 – Key Note II

Jari Ojala (Jyväskylä)

Introduction by Riho Altnurme (Tartu)

Creative destruction, path dependence and organizational longevity: how and why history matters?

10:00 – Coffee Break

10:15 – Forum, Collaborative Chair

**Volha Sasunkevich (Vilnius)/
Alexander Drost (Greifswald)**

Alexandra Fried (Gothenburg) –

opponent Kilian Heck (Greifswald)

The bunge master- reconsidered

Inge Christensen (Greifswald) –

opponent Bo Petersson (Malmö)

Visions of Western depravity and bourgeois hedonism in a post-soviet setting

Elisabeth Heigl (Greifswald) –

opponent Andreas Önnersfors (Malmö)

Incompetent professors? The deconstruction of the economic autonomy of the University of Greifswald in the second half of the 18th century

Mihkel Mäesalu (Tartu) –

opponent Mathias Niendorf (Greifswald)

Livonia’s (un)involvement in the Hussite Wars (1419-1434). The reaction of an established borderland to the emergence of a new enemy in “the centre”

Cynthia Osiecki (Greifswald) –

opponent Anti Selart (Tartu)

Hells angels or the devil for dummies? Depictions of hell in medieval sculpture

12:15 – Lunch

13:15 – Panel IV

Discussant and Chair

Jan-Henrik Nilsson (Lund)

Maare Paloheimo (Greifswald)

The emergence and assimilation of Russian-born businessmen in early-nineteenth-century Finland

Sebastian Nickel (Greifswald)

The mercurial monster: Re-bordering migration routes from Sub-Saharan Africa to the EU

Matthias Müller (Greifswald)

The monsters of luck: Lottery as a threat to the traditional order in the eighteenth century

Nicholas Prindiville (Helsinki/ Greifswald)

Finland's 'Trolls': Johan Bäckman and the Finnish Anti-Fascist Committee as Dissidents of Finnish Historiography

Closing Remarks (**Stephan Kessler (Greifswald)**)