

# Number of cancer cases in NSHDS

The information is based on available registers with varying follow-up times.

When planning studies using biobank material, it is important to have an approximate understanding of how many samples are available for research. In most cases, the limiting factor is the number of eligible cases for a specific disease. Below are summary tables for selected cancer diseases. We have chosen to present information that can be generated automatically and with relatively little manual work. Additional, more detailed data can be produced upon request, for example if needed for applications to BRS, the Ethical Review Authority (EPM), or a funding agency.

The list below is clickable, so you don't have to scroll down to the page you are looking for.

## Table of contents

- Explanation of selection and diagnostic codes in the report .....2
- Breast cancer, women <50 years at diagnosis .....3
- Breast cancer, women >=50 years at diagnosis .....5
- Prostate cancer.....7
- Pancreatic cancer .....9
- Lung cancer ..... 11
- Colorectal cancer ..... 13
- Colon cancer ..... 15
- Rectal cancer..... 17
- Uterine cancer ..... 19
- Ovarian cancer including peritoneal and tubal cancer .....21
- Kidney cancer .....23
- Urinary tract cancer.....25
- Malignant melanoma.....27
- Brain tumors .....29
- Hematological malignancies .....31
- Thyroid cancer .....33
- Esophageal cancer.....35
- Stomach cancer, including upper gastric orifice .....37
- Liver cancer .....39
- Gallbladder and bile duct cancer .....41
- All malignant cancers .....43

# Explanation of selection and diagnostic codes in the report

This report includes only study participants with invasive tumors and the diagnostic codes (ICD10) are listed below. Prospective sample = pre-diagnostic sample and retrospective = post-diagnostic sample.

Breast cancer: C50

Prostate cancer: C61

Pancreatic cancer: C25

Lung cancer: C34

Colon cancer: C18

Rectal cancer: C19, C20

Uterine cancer: C54

Ovarian cancer incl. peritoneal and tubal cancer: C480, C481, C569, C570

Kidney cancer: C64

Urinary tract cancer: C659, C669, C67, C68

Malignant melanoma: C43

Brain tumors: C71

Hematological malignancies: ICD7 200–209

Thyroid cancer: C73

Esophageal cancer: C15

Stomach cancer, incl. upper gastric opening: C16

Liver cancer: C220, C229

Gallbladder and bile duct cancer: C221, C239, C24

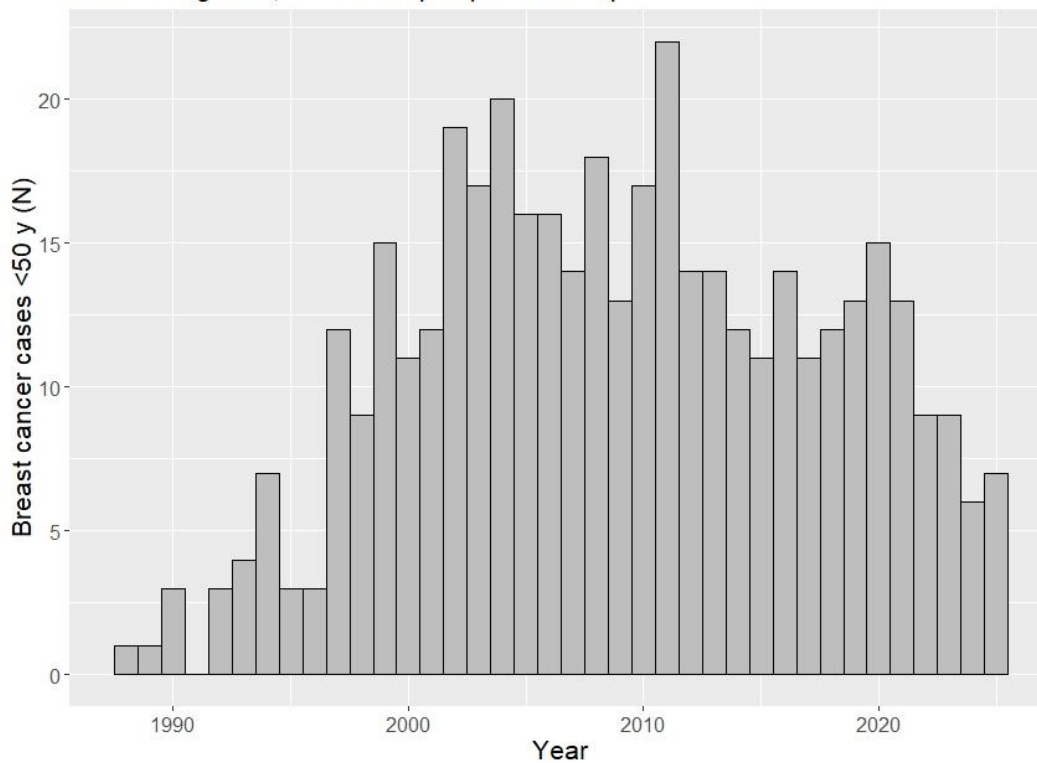
## Breast cancer, women <50 years at diagnosis

### Number of cases with different types of samples

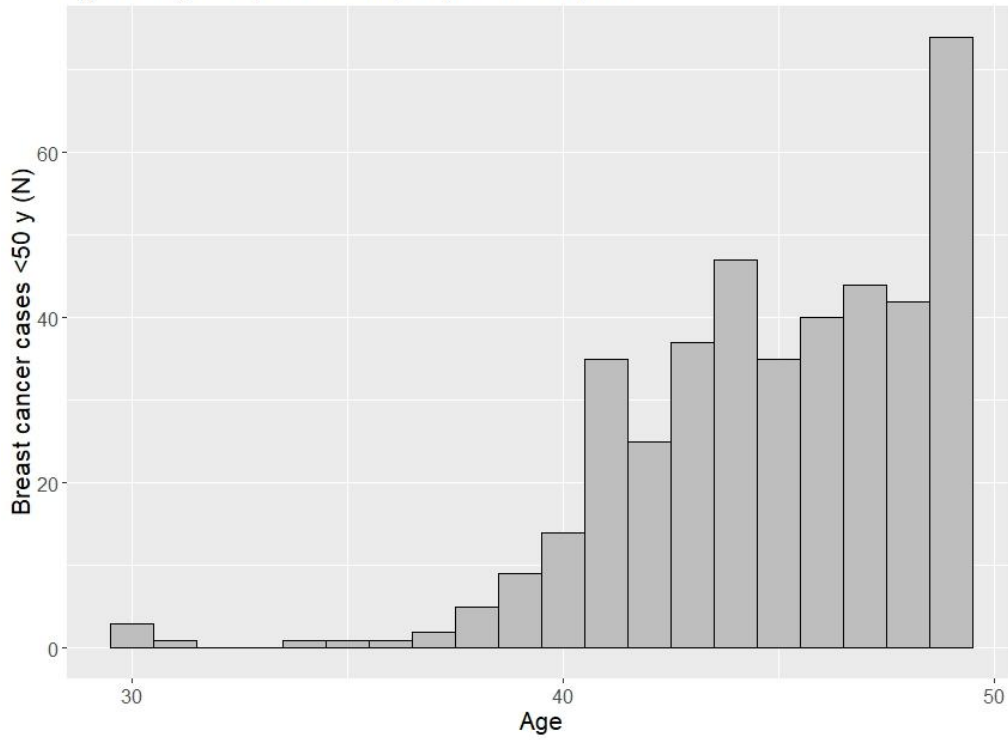
	EDTA-plasma	Heparin-plasma	Erythrocytes*	Buffy coat*	Extracted DNA
Total	857	860	849	845	509
≥1 Prospective	416	415	402	394	221
≥1 Unthawed prospective	305	315	286	267	NA
≥2 Prospective	61	61	61	57	15
≥2 Unthawed prospective	43	43	38	19	NA
≥1 Retrospective	629	631	626	622	299
≥1 Retrospective och ≥1 Prospective	857	860	849	845	509

\* Applies to EDTA tubes. For heparin the numbers are similar.

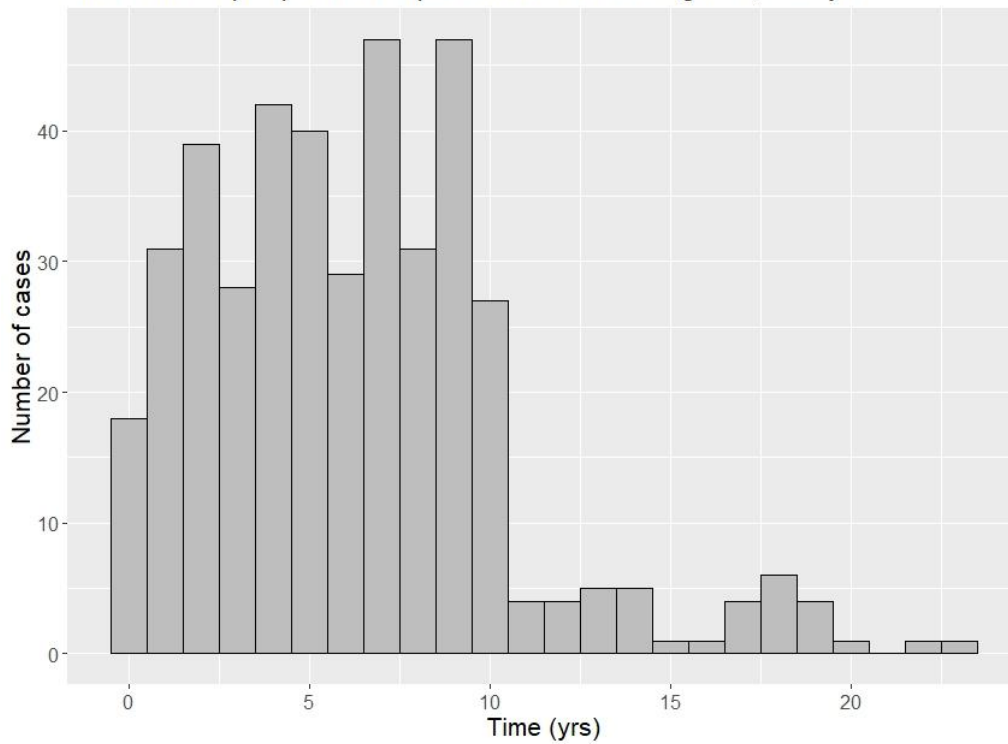
Year of diagnosis, cases with prospective samples



Age at diagnosis, cases with prospective samples



Time from last prospective sample to breast cancer diagnosis, < 50 yrs

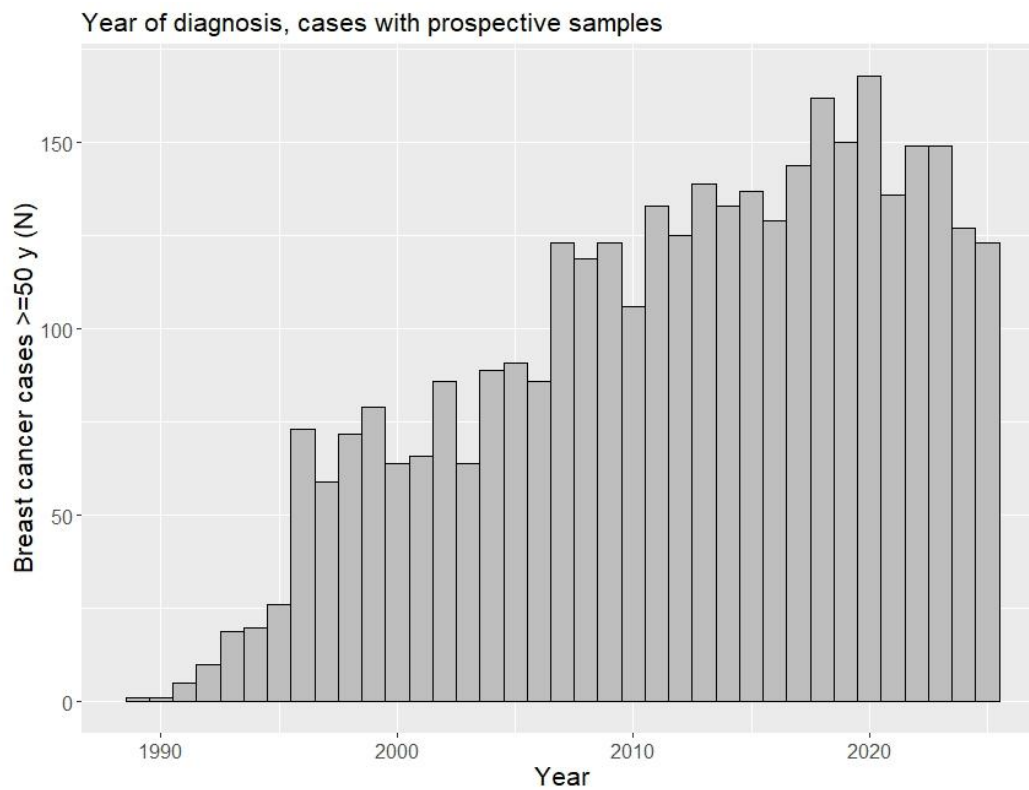


## Breast cancer, women $\geq 50$ years at diagnosis

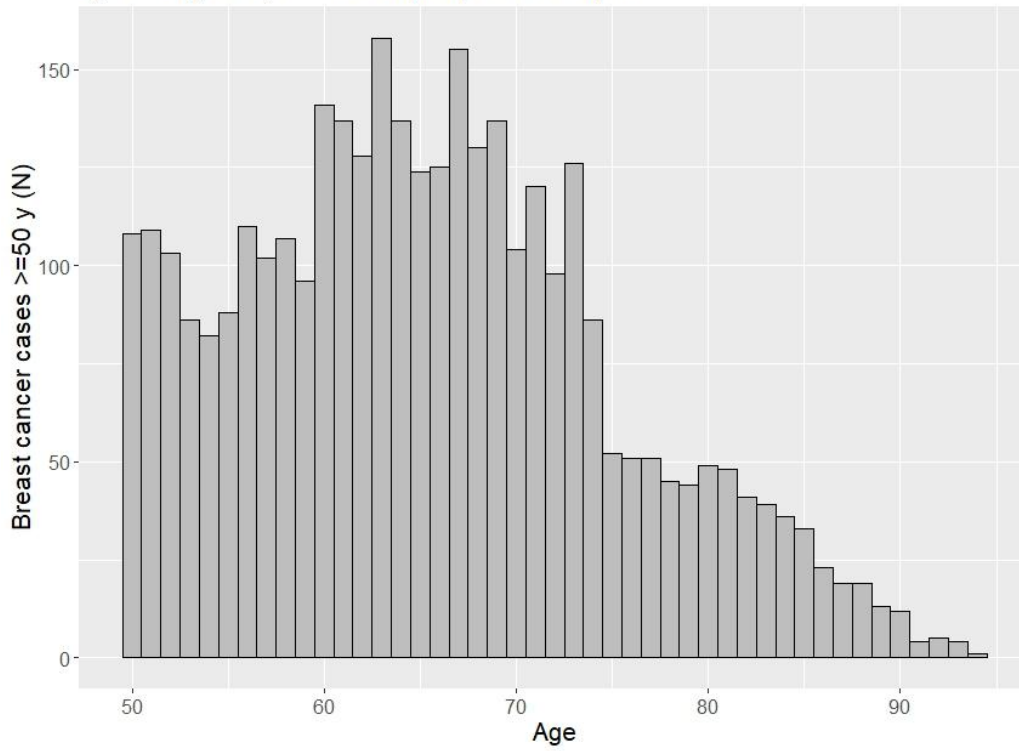
### Number of cases with different types of samples

	EDTA-plasma	Heparin-plasma	Erythrocytes*	Buffy coat*	Extracted DNA
Total	3736	3733	3703	3690	2470
$\geq 1$ Prospective	3486	3484	3408	3433	2259
$\geq 1$ Unthawed prospective	2850	3190	3054	2901	NA
$\geq 2$ Prospective	2265	2267	2244	2191	426
$\geq 2$ Unthawed prospective	1704	2012	1804	1613	NA
$\geq 1$ Retrospective	713	712	711	703	261
$\geq 1$ Retrospective och $\geq 1$ Prospective	463	463	416	446	50

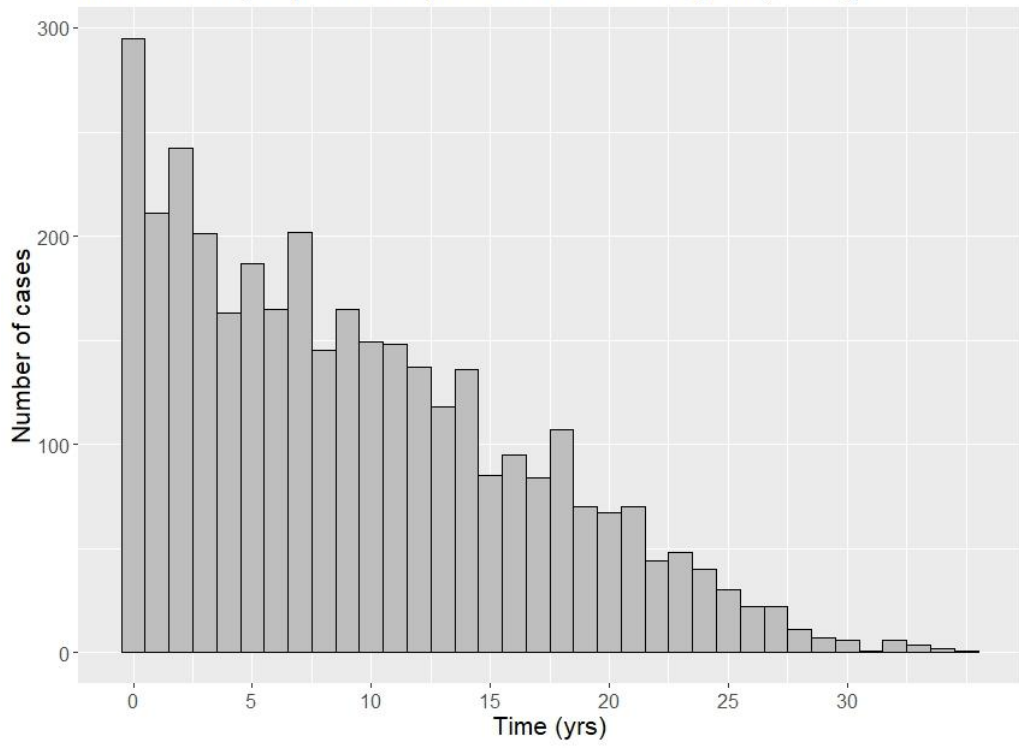
\* Applies to EDTA tubes. For heparin the numbers are similar.



Age at diagnosis, cases with prospective samples



Time from last prospective sample to breast cancer diagnosis, >=50 yrs

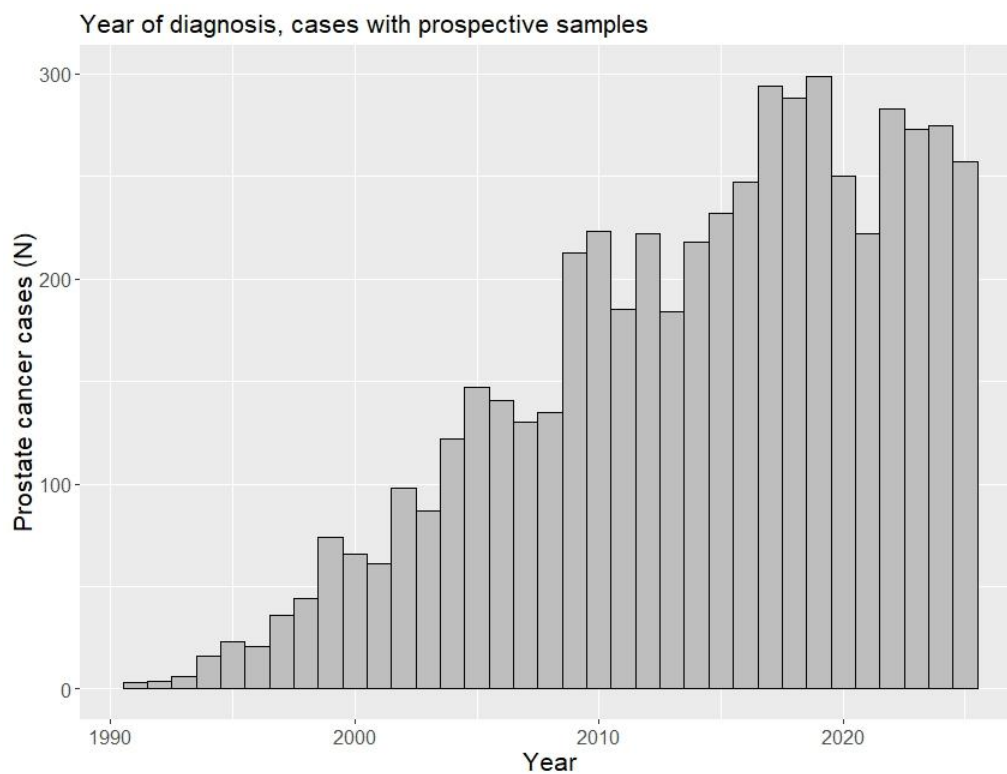


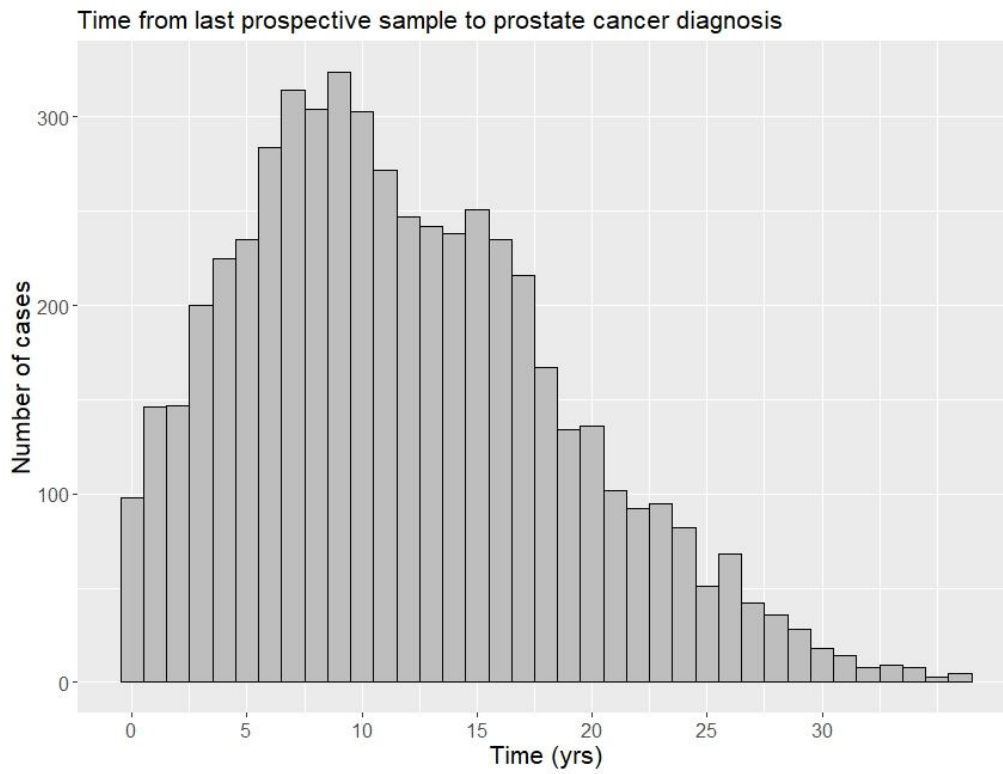
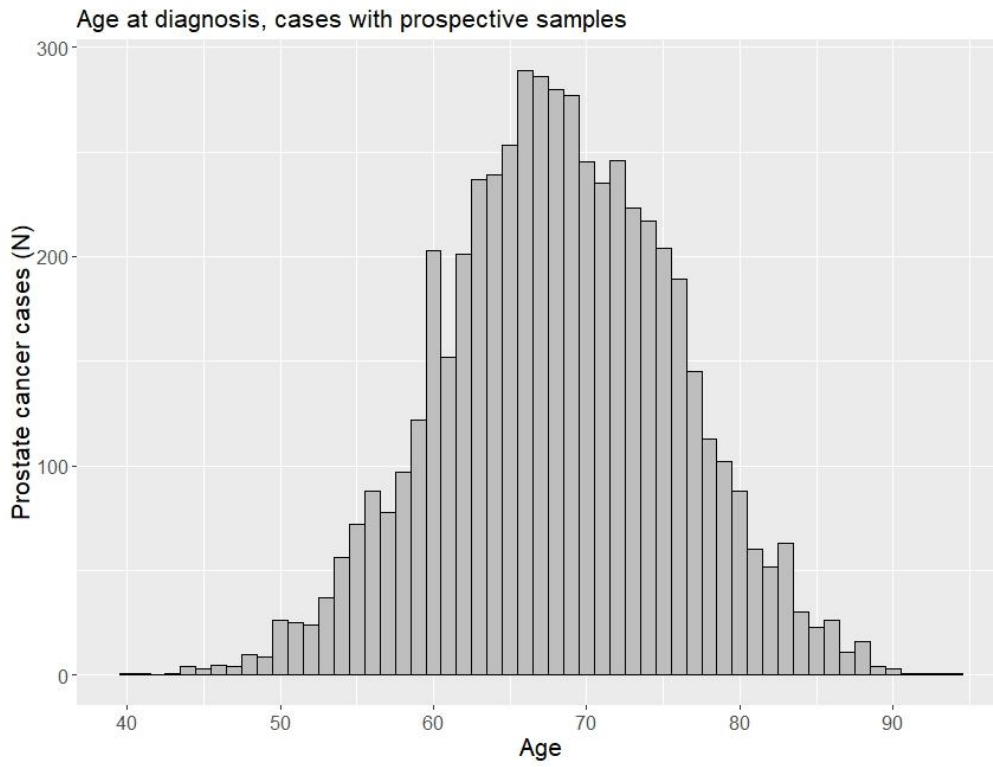
## Prostate cancer

### Number of cases with different types of samples

	EDTA-plasma	Heparin-plasma	Erythrocytes*	Buffy coat*	Extracted DNA
Total	5527	5519	5516	5420	3302
≥1 Prospective	5379	5371	5367	5262	3248
≥1 Unthawed prospective	3848	3958	4291	3849	NA
≥2 Prospective	2339	2341	2324	2171	427
≥2 Unthawed prospective	1687	1727	1804	1279	NA
≥1 Retrospective	426	426	426	422	67
≥1 Retrospective och ≥1 Prospective	278	278	277	264	13

\* Applies to EDTA tubes. For heparin the numbers are similar.



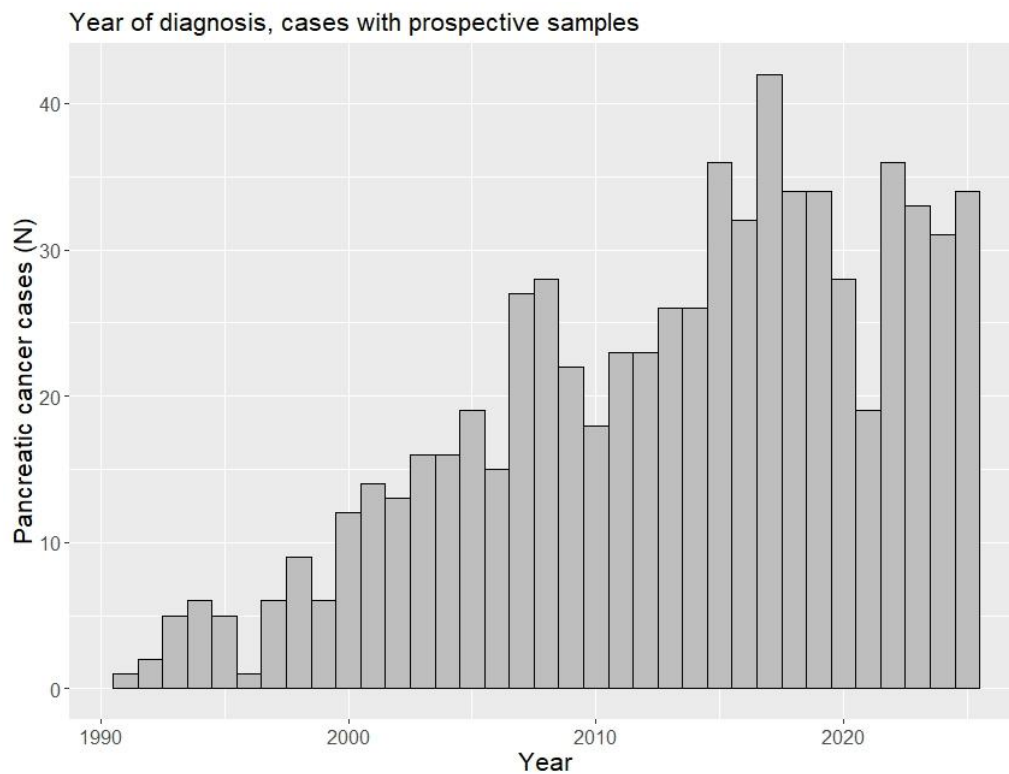


## Pancreatic cancer

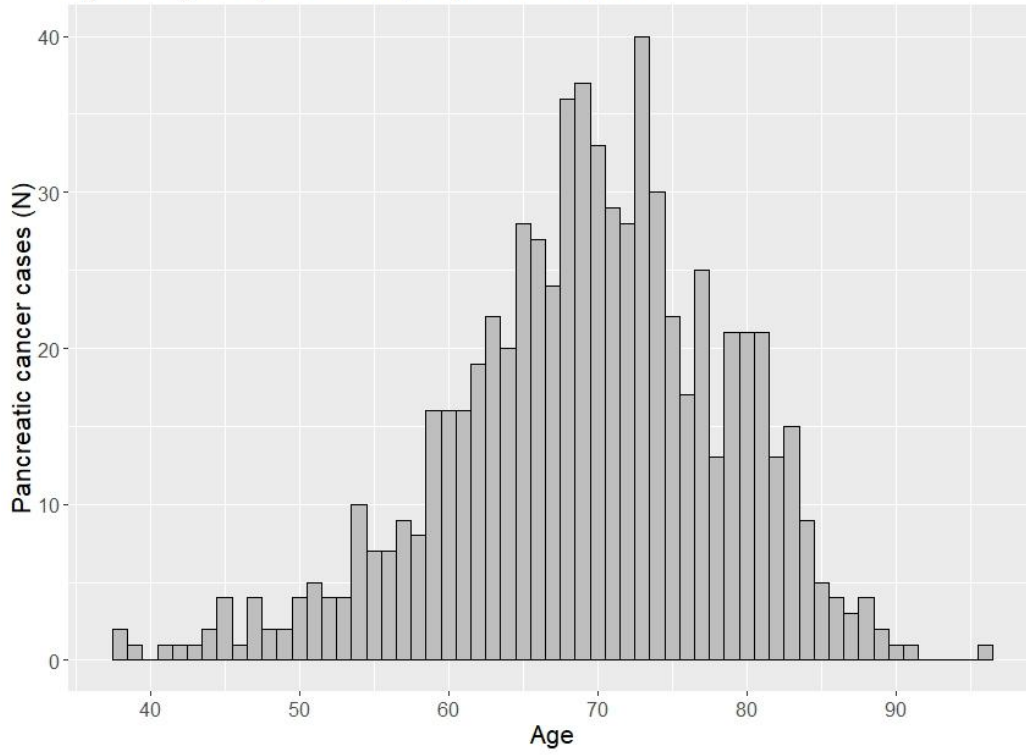
### Number of cases with different types of samples

	EDTA-plasma	Heparin-plasma	Erythrocytes*	Buffy coat*	Extracted DNA
Total	699	698	696	688	441
≥1 Prospective	698	697	695	687	441
≥1 Unthawed prospective	379	617	591	520	NA
≥2 Prospective	374	375	374	368	63
≥2 Unthawed prospective	193	319	307	258	NA
≥1 Retrospective	5	5	5	5	0
≥1 Retrospective och ≥1 Prospective	4	4	4	4	0

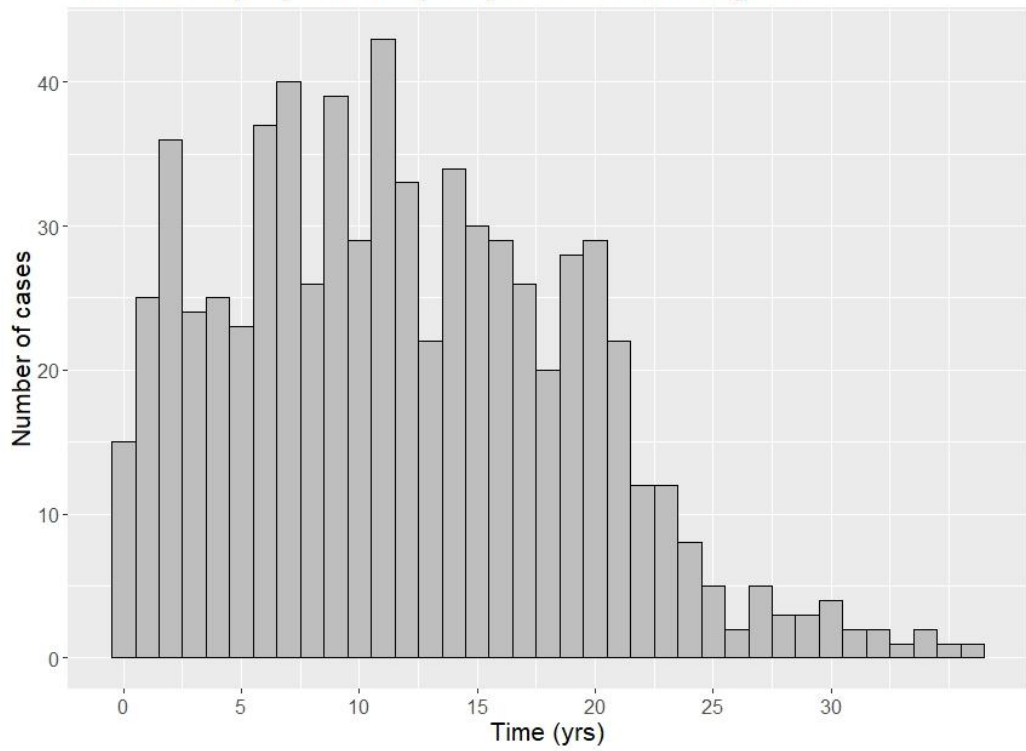
\* Applies to EDTA tubes. For heparin the numbers are similar.



Age at diagnosis, cases with prospective samples



Time from last prospective sample to pancreatic cancer diagnosis

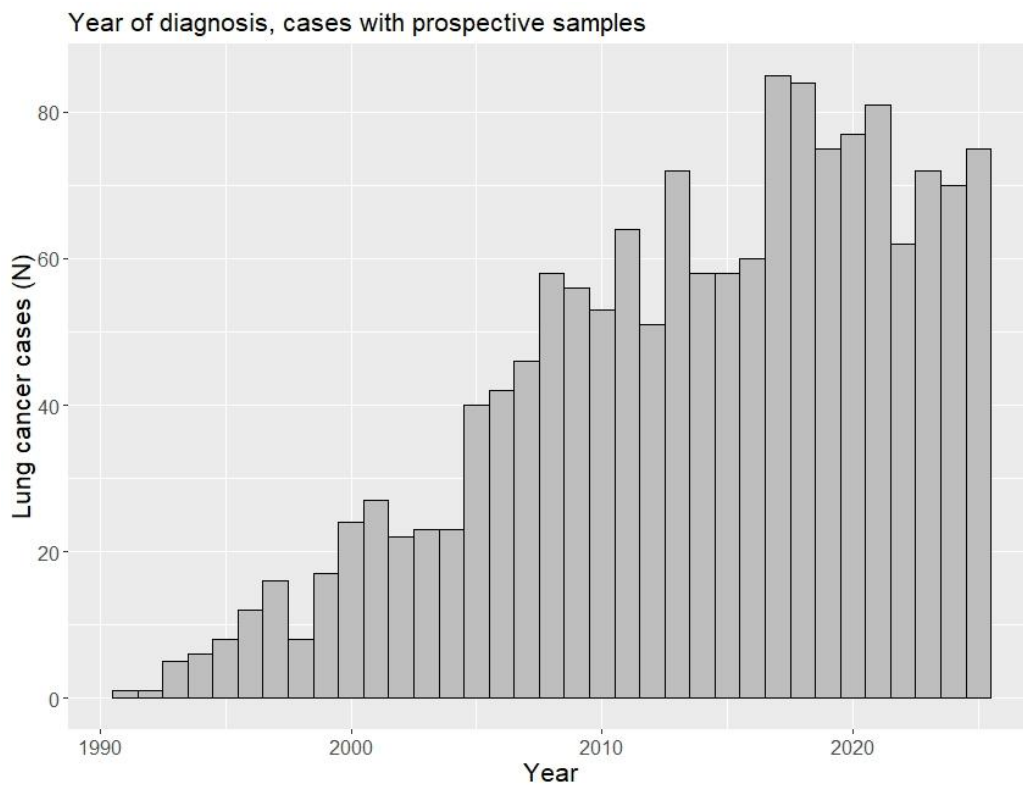


## Lung cancer

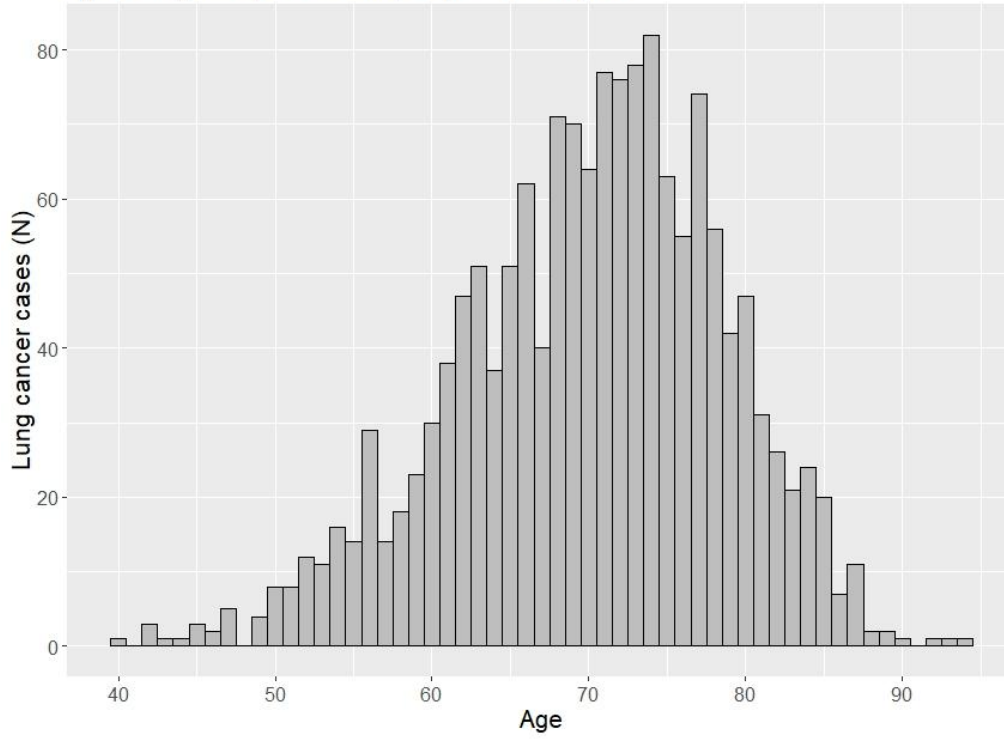
### Number of cases with different types of samples

	EDTA-plasma	Heparin-plasma	Erythrocytes*	Buffy coat*	Extracted DNA
Total	1552	1551	1545	1451	1106
≥1 Prospective	1532	1531	1525	1428	1095
≥1 Unthawed prospective	1034	1347	1328	1022	NA
≥2 Prospective	760	761	756	652	209
≥2 Unthawed prospective	508	666	640	444	NA
≥1 Retrospective	40	40	40	40	12
≥1 Retrospective och ≥1 Prospective	20	20	20	17	1

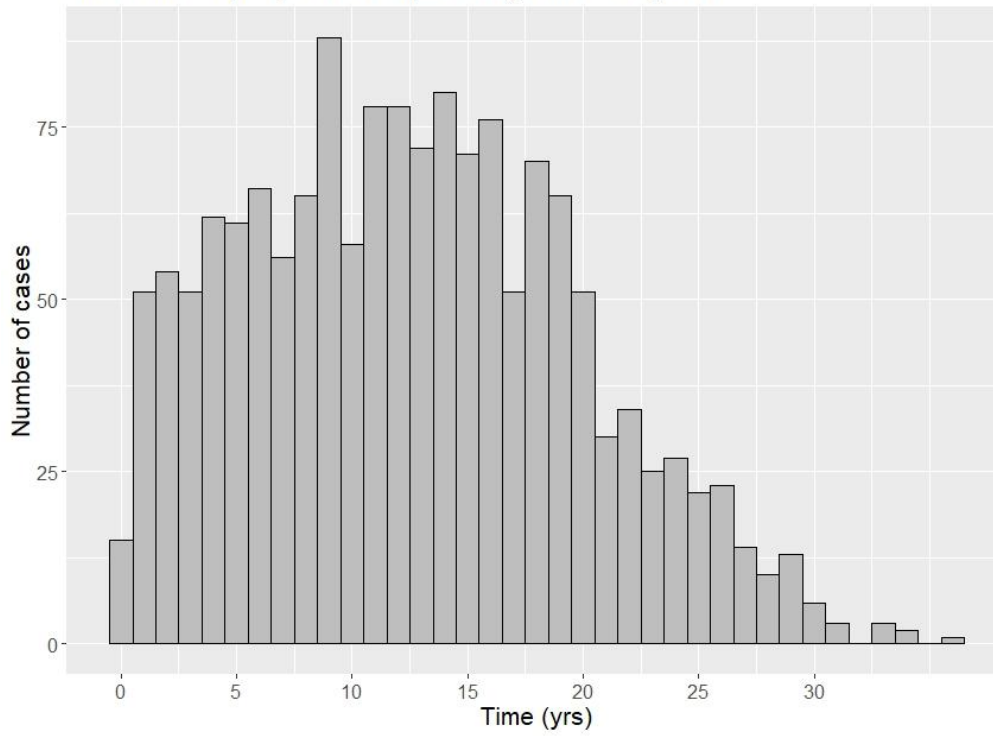
\* Applies to EDTA tubes. For heparin the numbers are similar.



Age at diagnosis, cases with prospective samples



Time from last prospective sample to lung cancer diagnosis



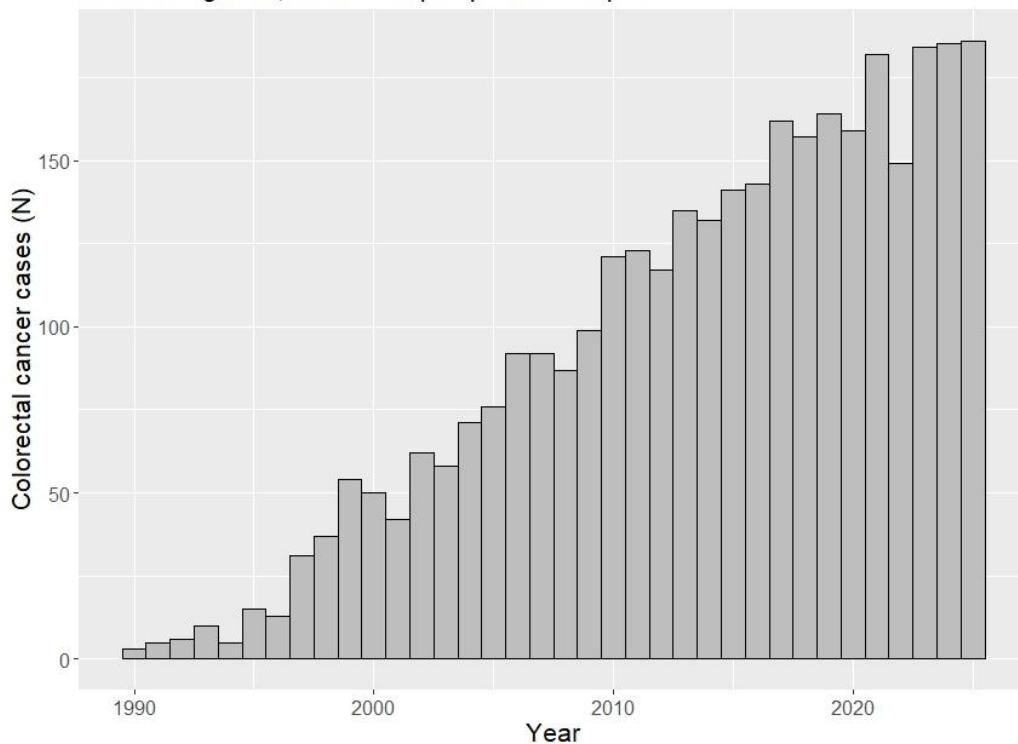
## Colorectal cancer

### Number of cases with different types of samples

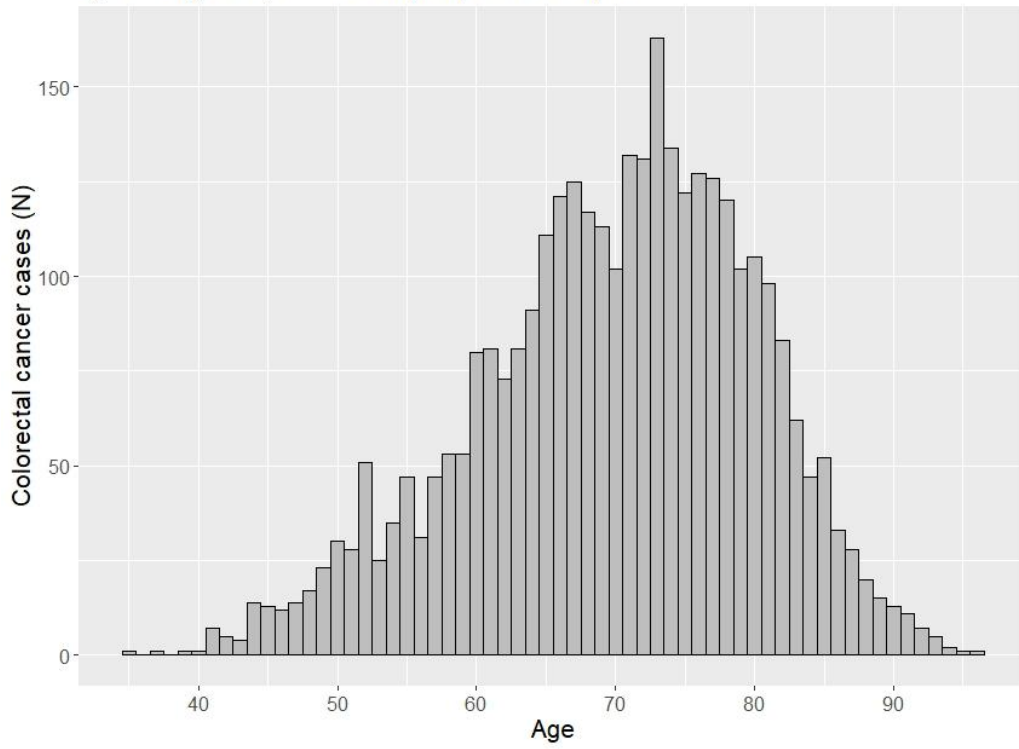
	EDTA-plasma	Heparin-plasma	Erythrocytes*	Buffy coat*	Extracted DNA
Total	3555	3549	3529	3481	2469
≥1 Prospective	3348	3340	3320	3275	2370
≥1 Unthawed prospective	2273	2776	2768	2463	NA
≥2 Prospective	1756	1760	1750	1687	357
≥2 Unthawed prospective	1207	1482	1445	1127	NA
≥1 Retrospective	394	395	393	387	112
≥1 Retrospective och ≥1 Prospective	187	186	184	181	13

\* Applies to EDTA tubes. For heparin the numbers are similar.

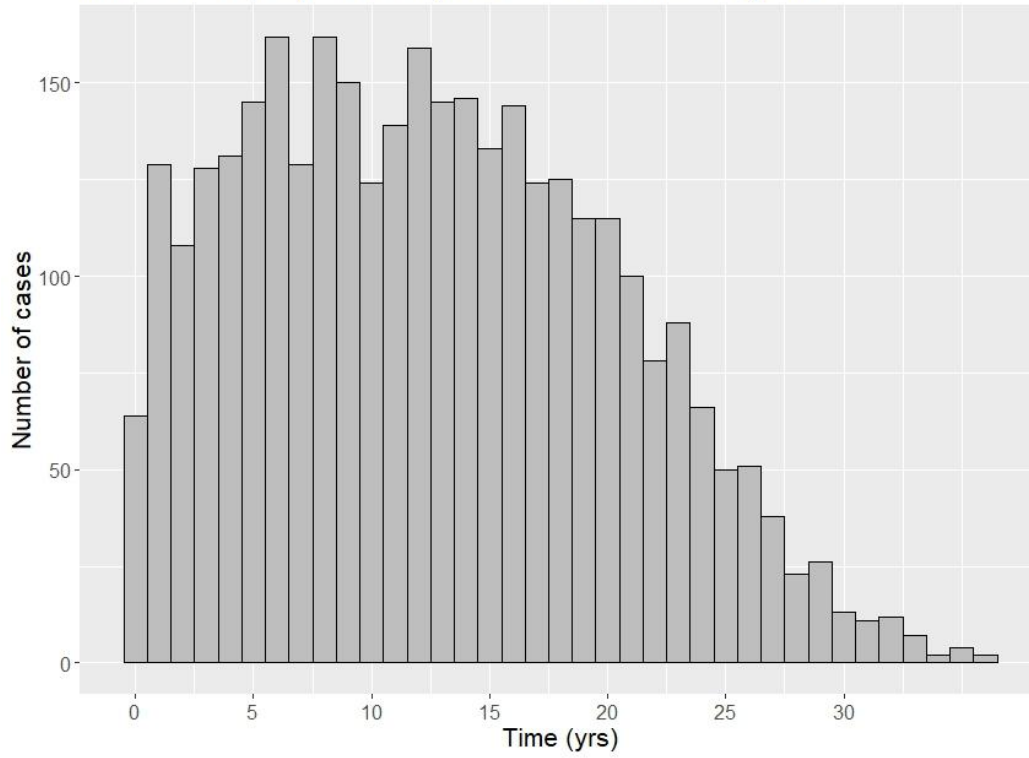
Year of diagnosis, cases with prospective samples



Age at diagnosis, cases with prospective samples



Time from last prospective sample to colorectal cancer diagnosis

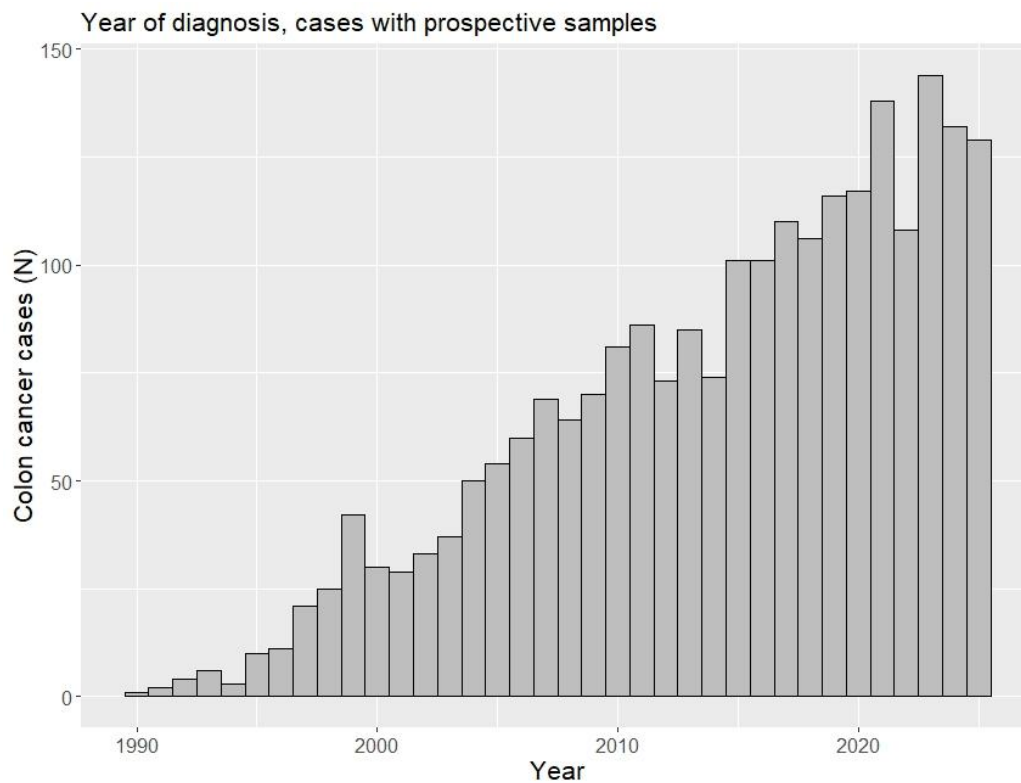


## Colon cancer

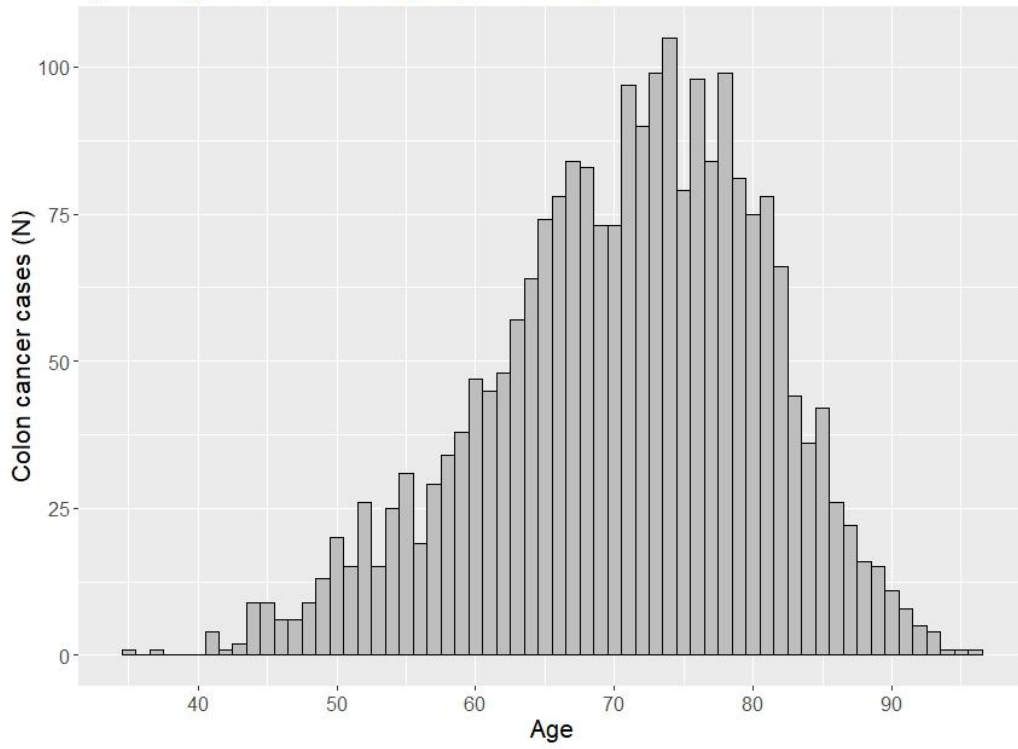
### Number of cases with different types of samples

	EDTA-plasma	Heparin-plasma	Erythrocytes*	Buffy coat*	Extracted DNA
Total	2463	2456	2449	2419	1715
≥1 Prospective	2322	2314	2307	2279	1656
≥1 Unthawed prospective	1639	1945	1934	1733	NA
≥2 Prospective	1255	1258	1251	1210	243
≥2 Unthawed prospective	889	1060	1050	833	NA
≥1 Retrospective	255	256	255	252	64
≥1 Retrospective och ≥1 Prospective	114	114	113	112	5

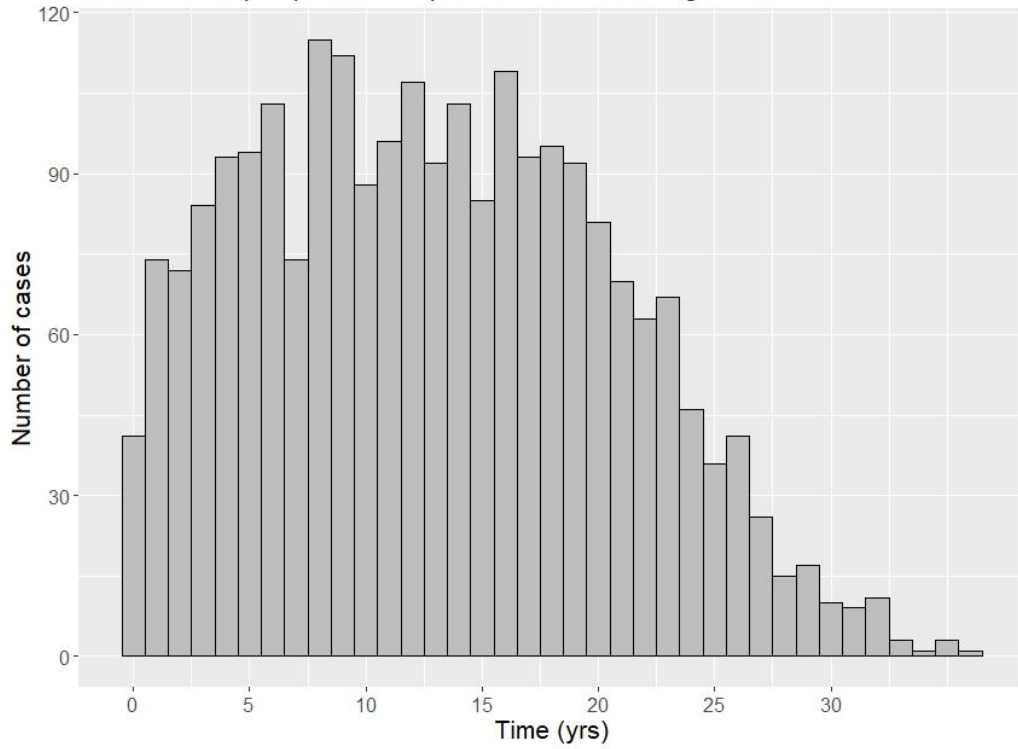
\* Applies to EDTA tubes. For heparin the numbers are similar.



Age at diagnosis, cases with prospective samples



Time from last prospective sample to colon cancer diagnosis

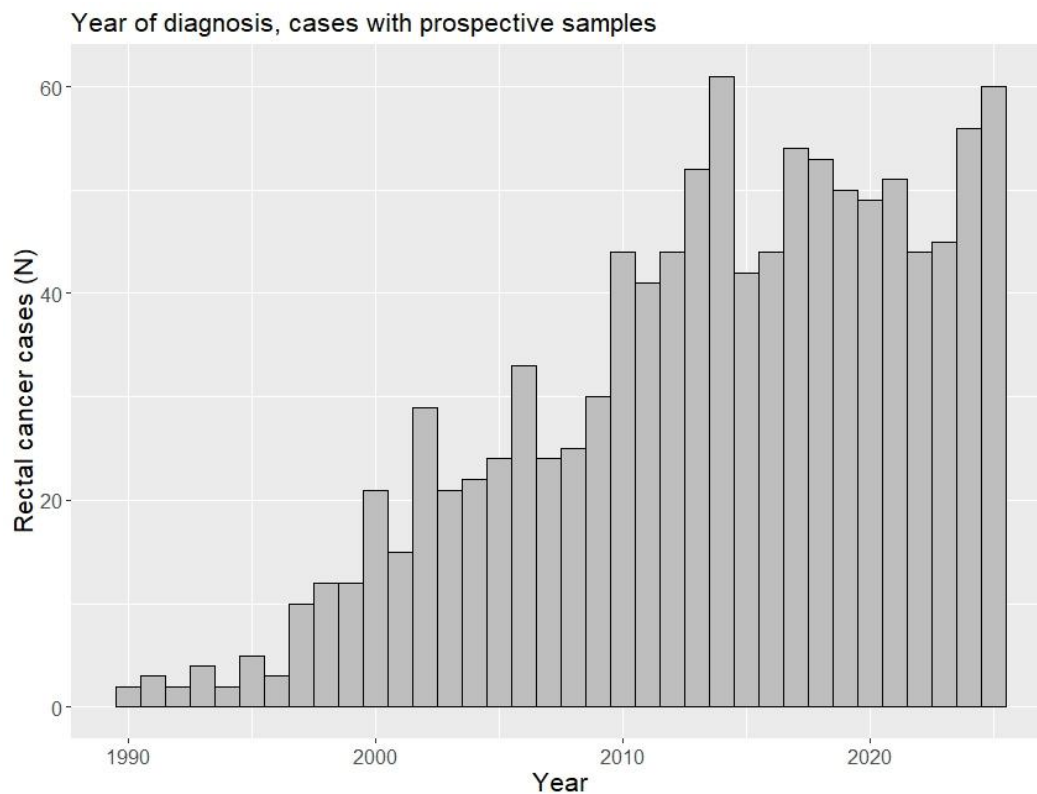


## Rectal cancer

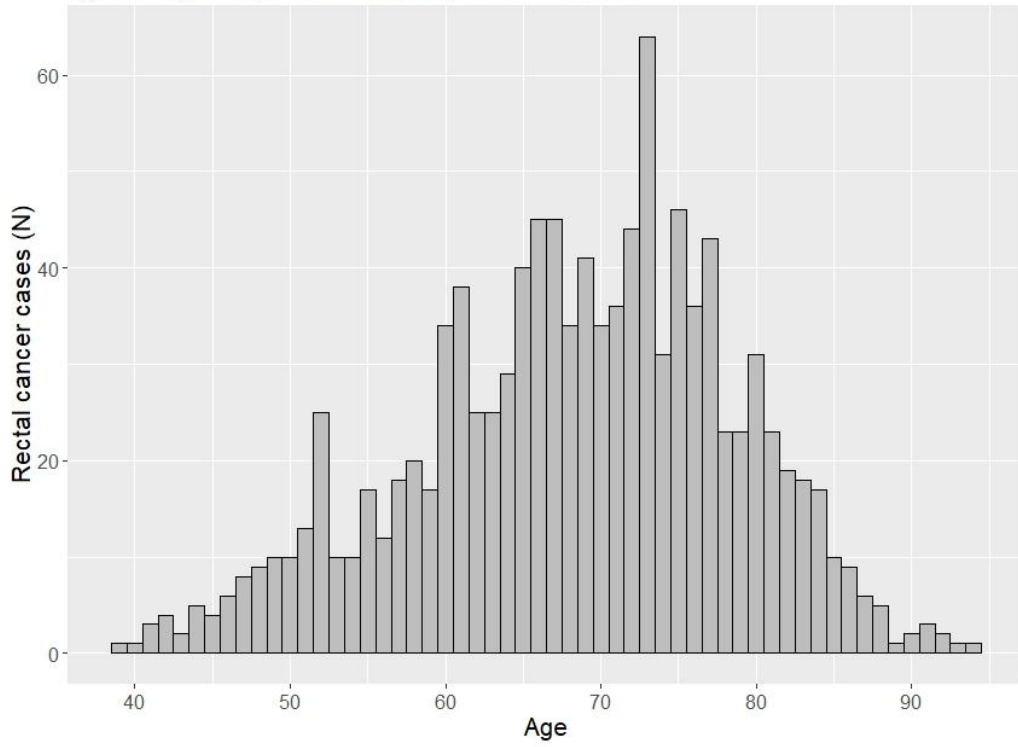
### Number of cases with different types of samples

	EDTA-plasma	Heparin-plasma	Erythrocytes*	Buffy coat*	Extracted DNA
Total	1156	1157	1144	1125	803
≥1 Prospective	1089	1089	1076	1058	762
≥1 Unthawed prospective	678	882	885	778	NA
≥2 Prospective	539	540	537	514	126
≥2 Unthawed prospective	339	454	427	316	NA
≥1 Retrospective	141	141	140	137	49
≥1 Retrospective och ≥1 Prospective	74	73	72	70	8

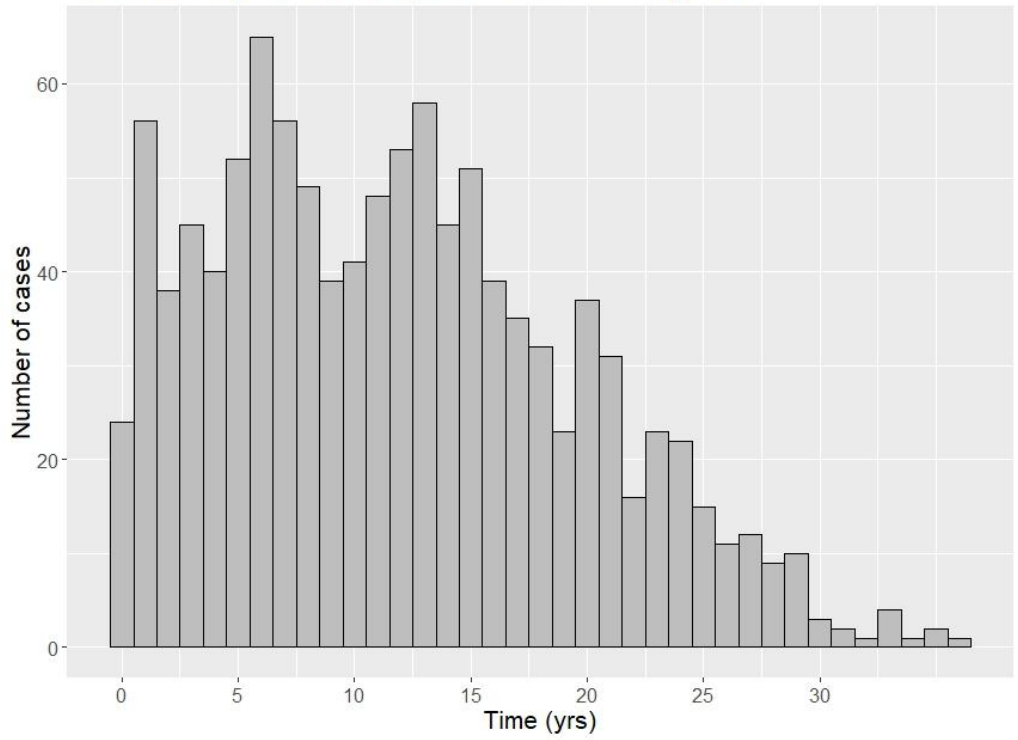
\* Applies to EDTA tubes. For heparin the numbers are similar.



Age at diagnosis, cases with prospective samples



Time from last prospective sample to rectal cancer diagnosis

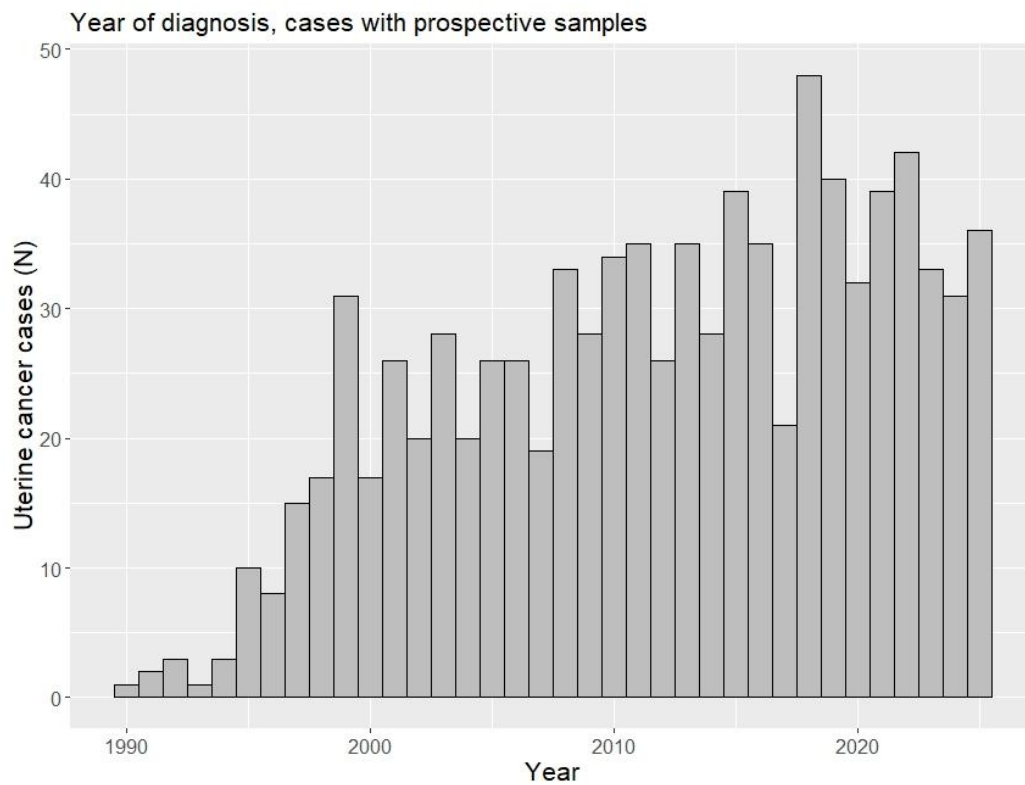


## Uterine cancer

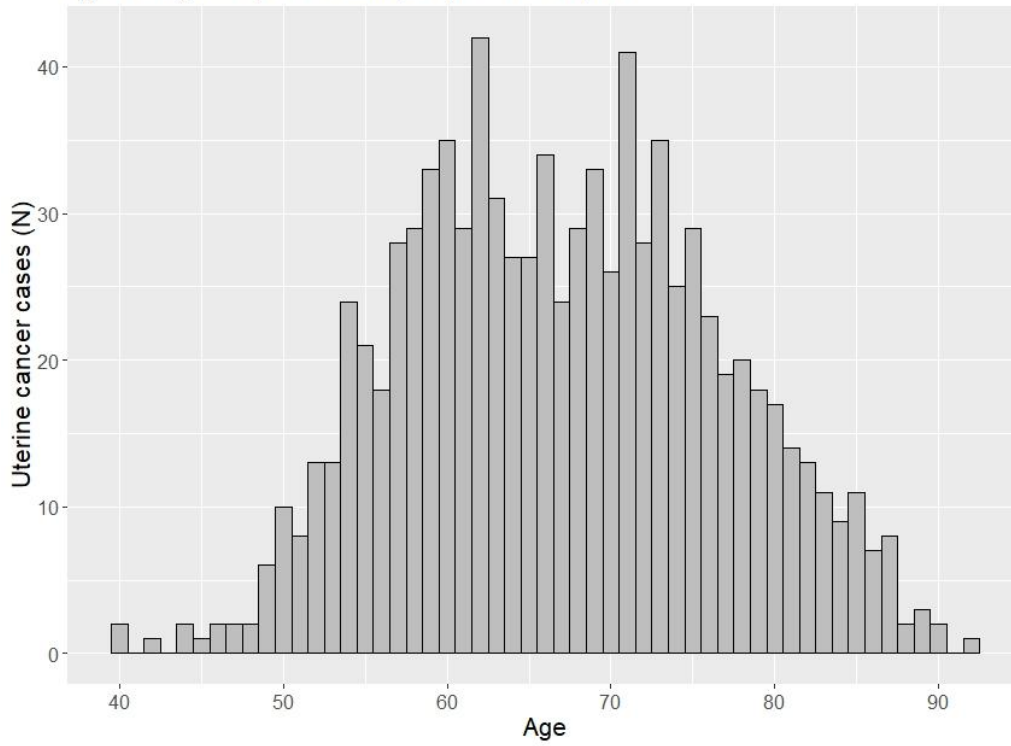
### Number of cases with different types of samples

	EDTA-plasma	Heparin-plasma	Erythrocytes*	Buffy coat*	Extracted DNA
Total	1049	1050	1045	1031	680
≥1 Prospective	888	889	884	867	589
≥1 Unthawed prospective	782	829	751	718	NA
≥2 Prospective	572	573	573	553	98
≥2 Unthawed prospective	478	533	469	403	NA
≥1 Retrospective	318	317	318	315	109
≥1 Retrospective och ≥1 Prospective	157	156	157	151	18

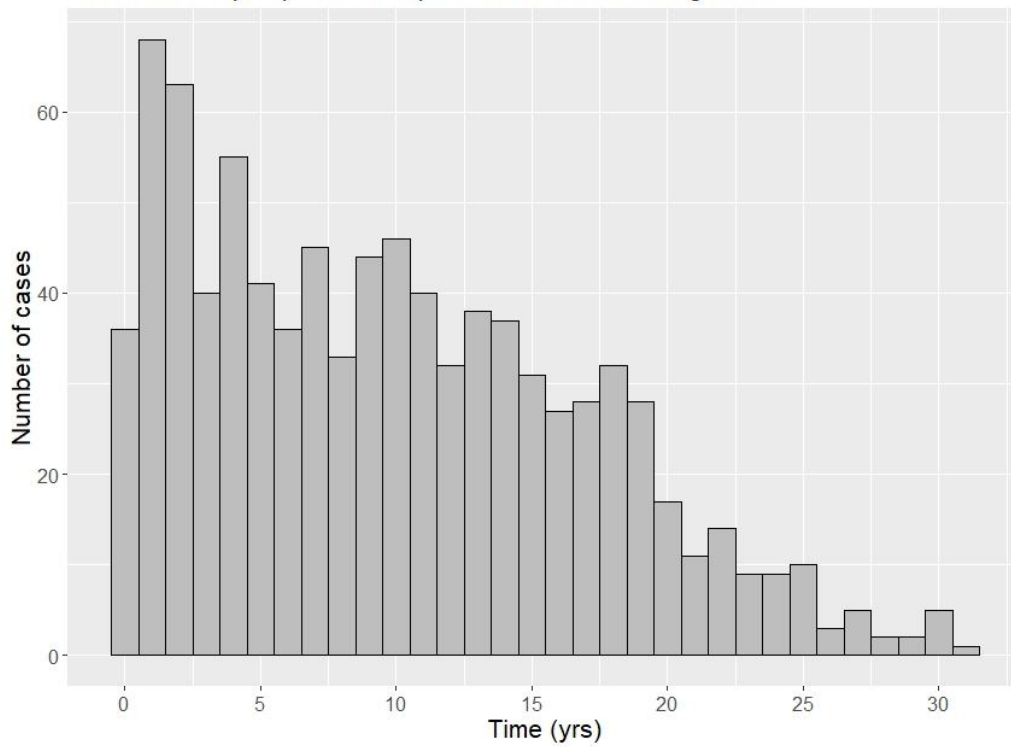
\* Applies to EDTA tubes. For heparin the numbers are similar.



Age at diagnosis, cases with prospective samples



Time from last prospective sample to uterine cancer diagnosis



## Ovarian cancer including peritoneal and tubal cancer

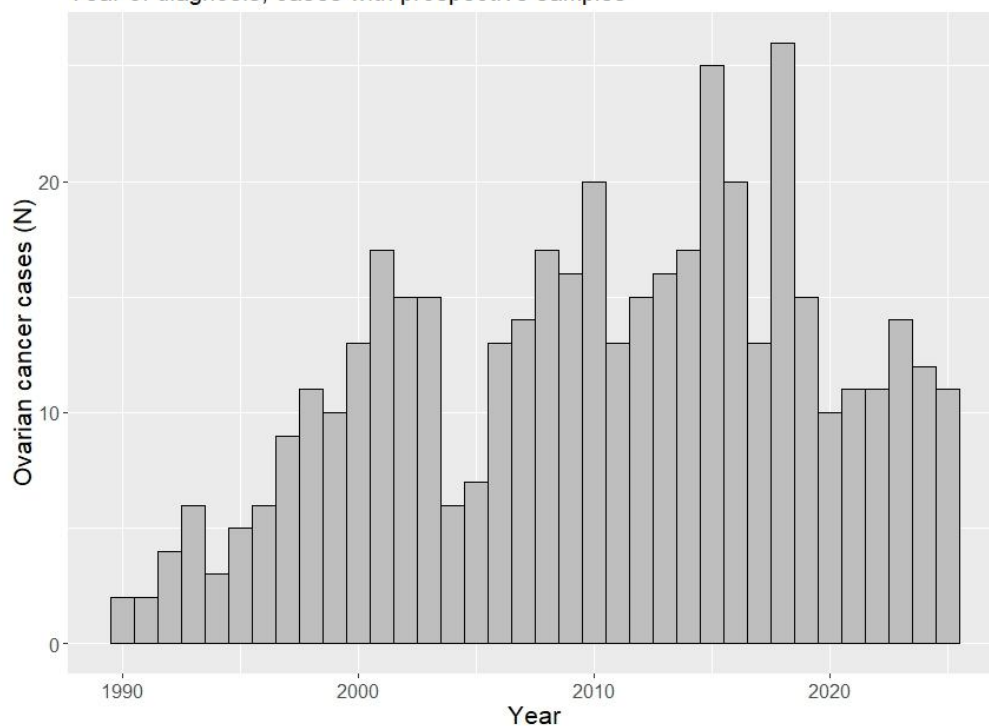
Borderline are not included

### Number of cases with different types of samples

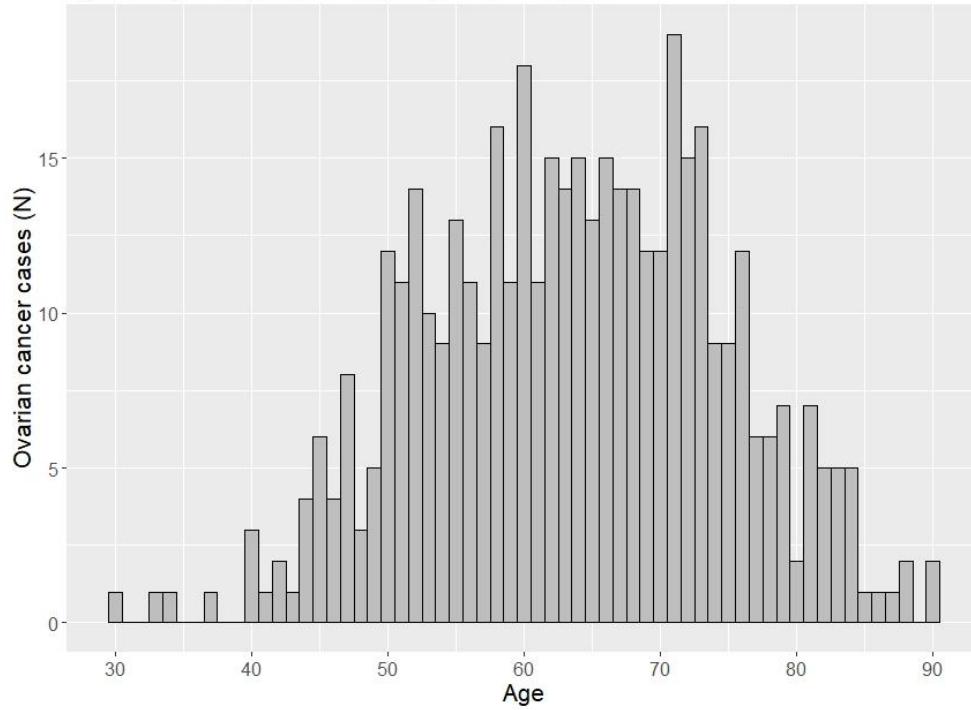
	EDTA-plasma	Heparin-plasma	Erythrocytes*	Buffy coat*	Extracted DNA
Total	558	555	553	540	355
≥1 Prospective	440	437	435	425	298
≥1 Unthawed prospective	335	367	404	310	NA
≥2 Prospective	242	242	241	236	42
≥2 Unthawed prospective	177	217	210	167	NA
≥1 Retrospective	165	165	165	163	58
≥1 Retrospective och ≥1 Prospective	47	47	47	48	1

\* Applies to EDTA tubes. For heparin the numbers are similar.

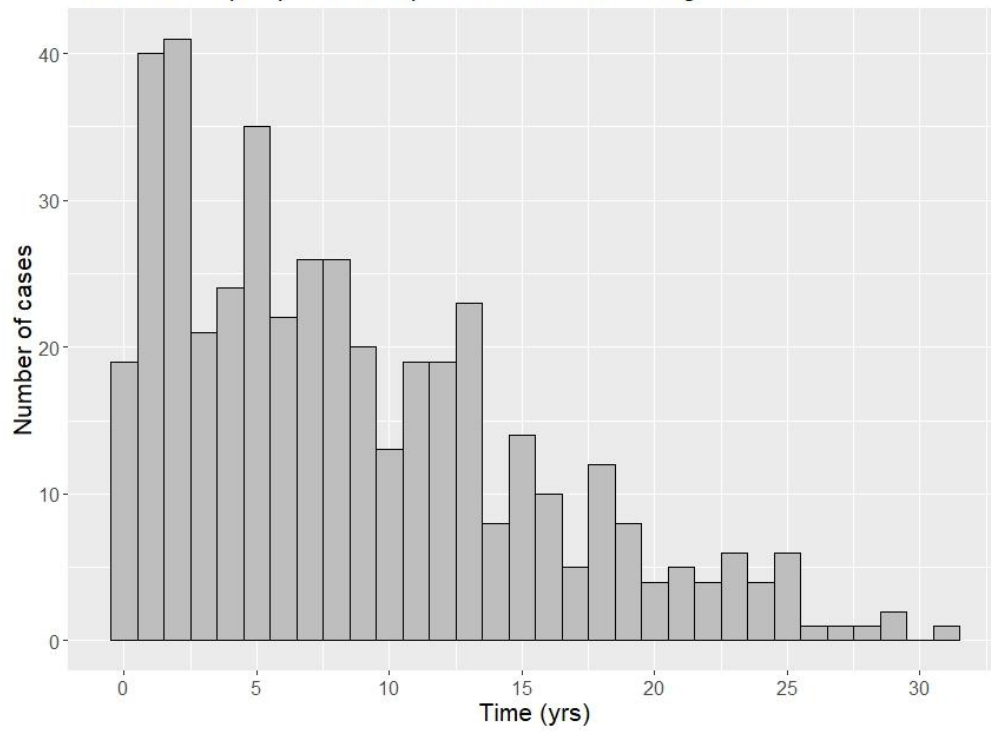
Year of diagnosis, cases with prospective samples



Age at diagnosis, cases with prospective samples



Time from last prospective sample to ovarian cancer diagnosis



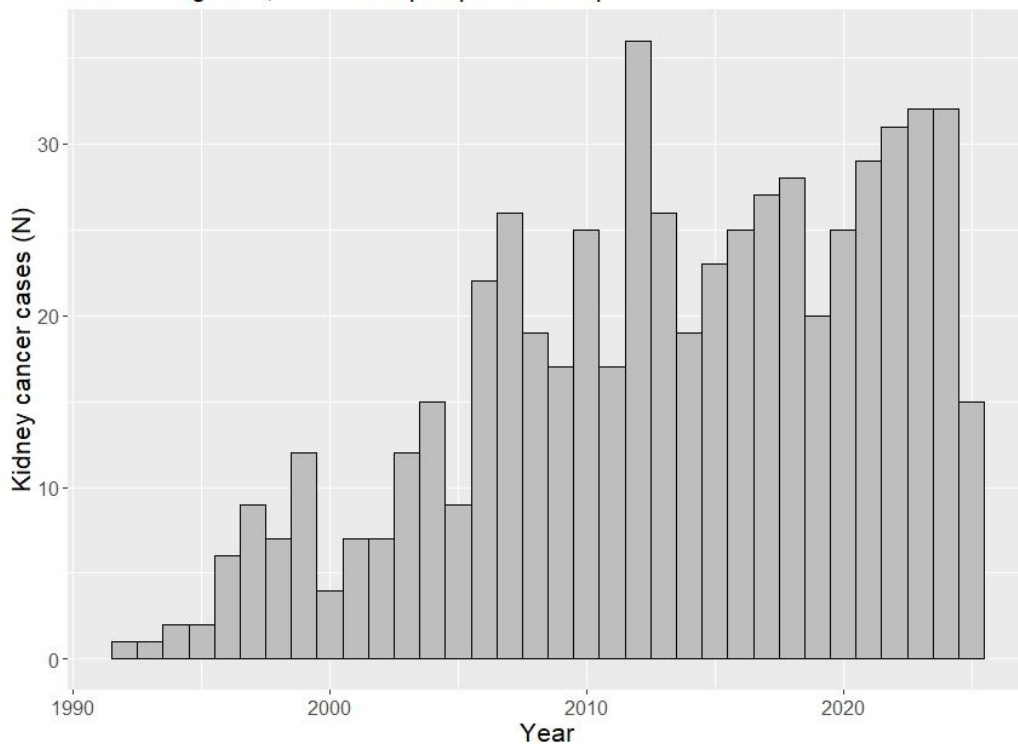
## Kidney cancer

### Number of cases with different types of samples

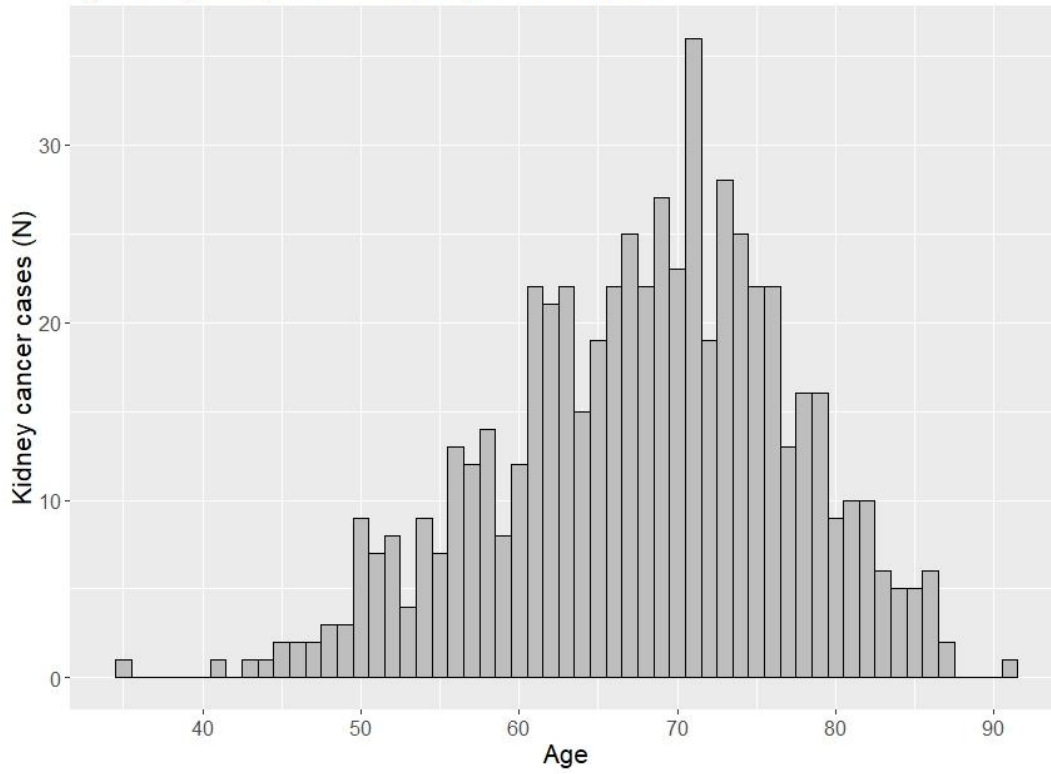
	EDTA-plasma	Heparin-plasma	Erythrocytes*	Buffy coat*	Extracted DNA
Total	647	648	647	637	397
≥1 Prospective	588	589	587	577	361
≥1 Unthawed prospective	435	542	530	421	NA
≥2 Prospective	283	280	281	270	49
≥2 Unthawed prospective	186	238	231	180	NA
≥1 Retrospective	98	97	98	96	37
≥1 Retrospective och ≥1 Prospective	39	38	38	36	1

\* Applies to EDTA tubes. For heparin the numbers are similar.

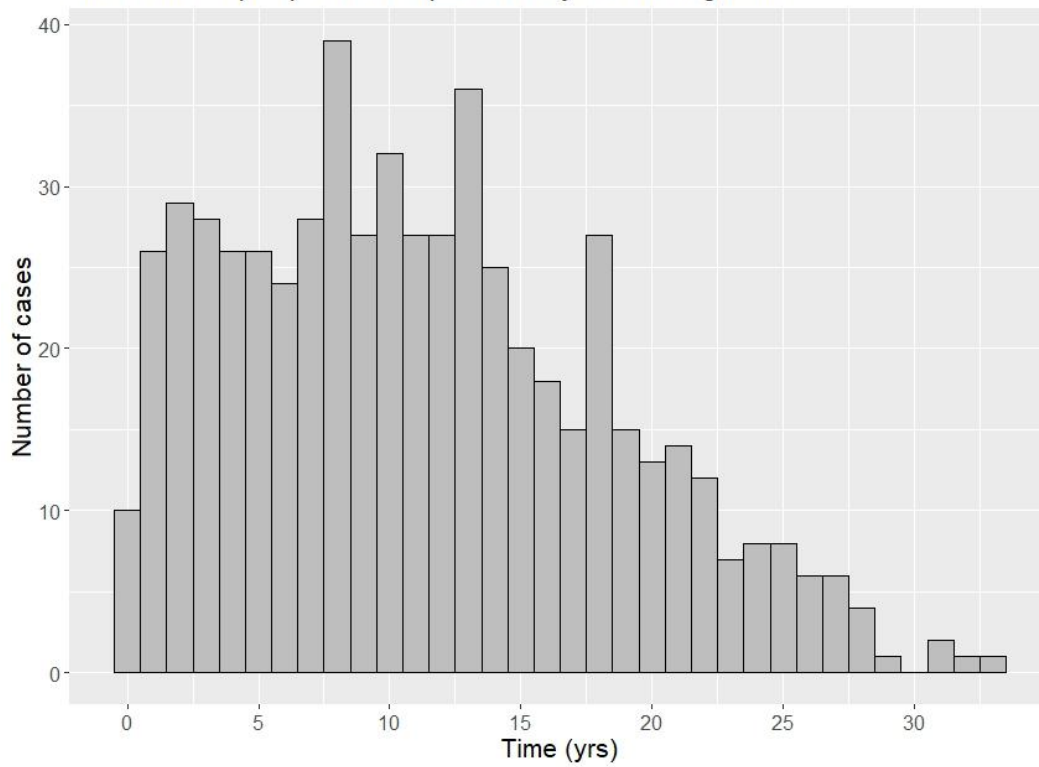
Year of diagnosis, cases with prospective samples



Age at diagnosis, cases with prospective samples



Time from last prospective sample to kidney cancer diagnosis

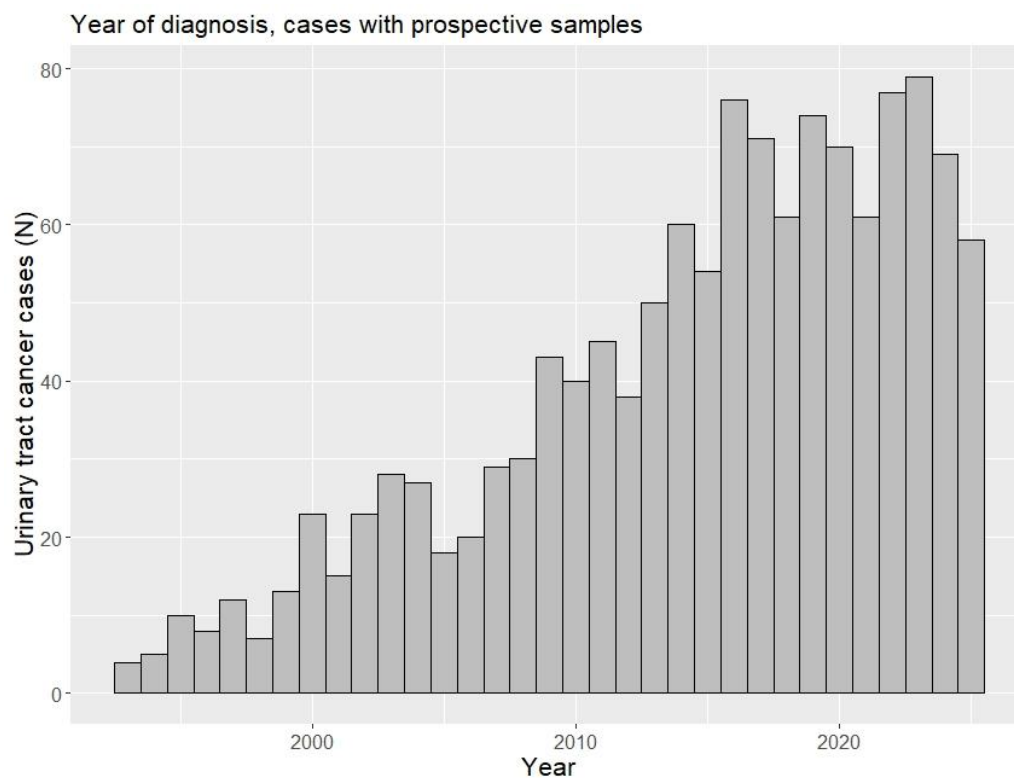


## Urinary tract cancer

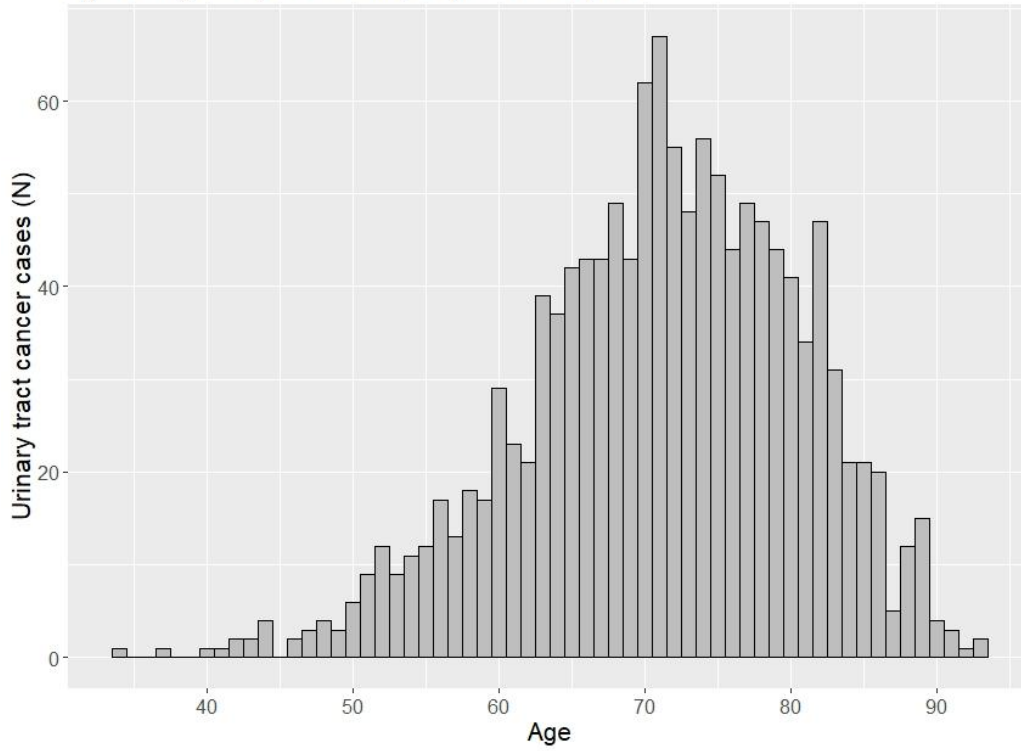
### Number of cases with different types of samples

	EDTA-plasma	Heparin-plasma	Erythrocytes*	Buffy coat*	Extracted DNA
Total	1345	1343	1345	1309	807
≥1 Prospective	1298	1295	1297	1259	782
≥1 Unthawed prospective	899	1070	1053	923	NA
≥2 Prospective	545	546	536	511	98
≥2 Unthawed prospective	371	451	434	343	NA
≥1 Retrospective	115	114	116	113	30
≥1 Retrospective och ≥1 Prospective	68	66	68	63	5

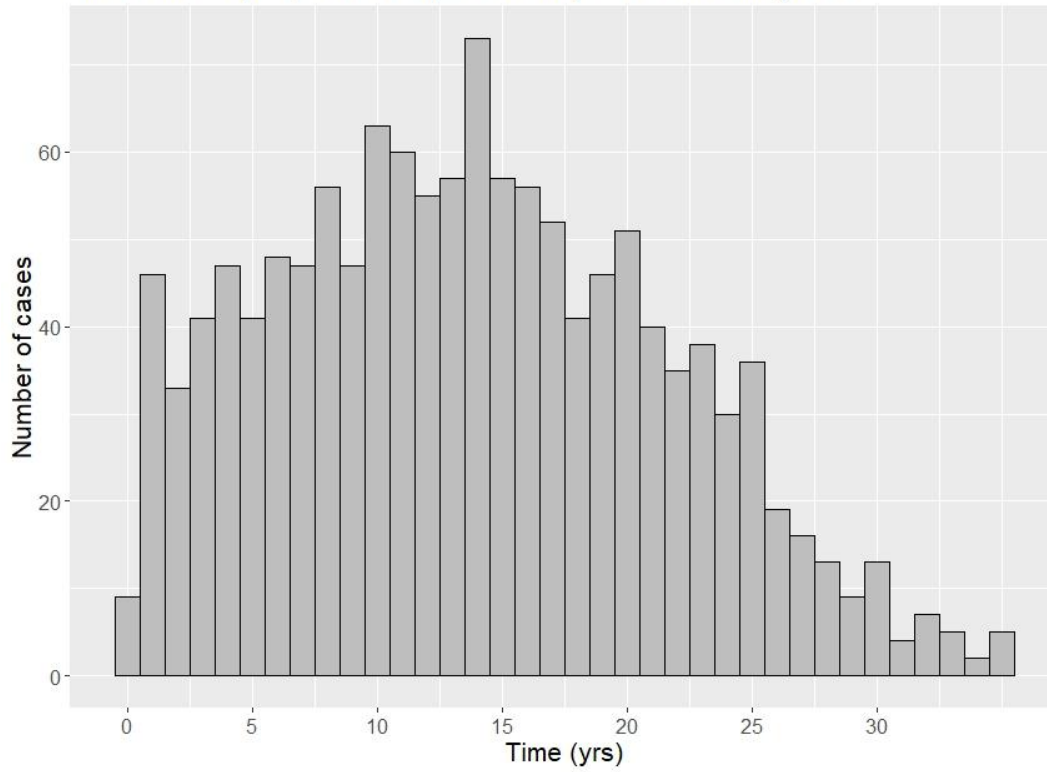
\* Applies to EDTA tubes. For heparin the numbers are similar.



Age at diagnosis, cases with prospective samples



Time from last prospective sample to urinary tract cancer diagnosis

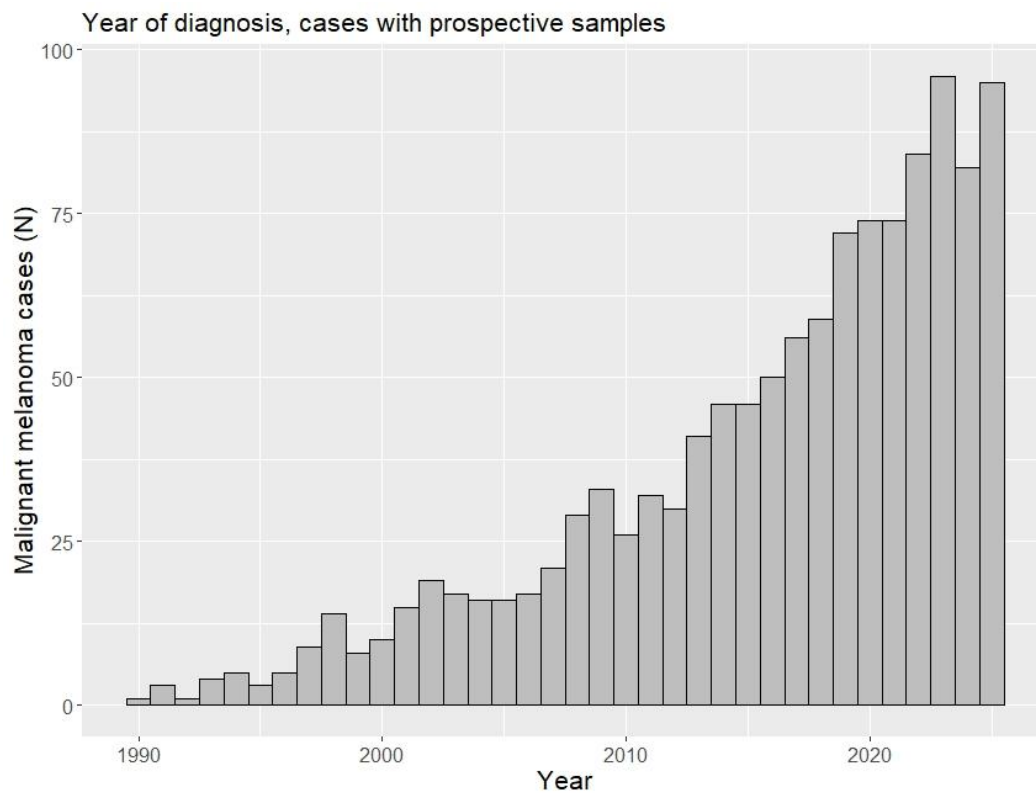


## Malignant melanoma

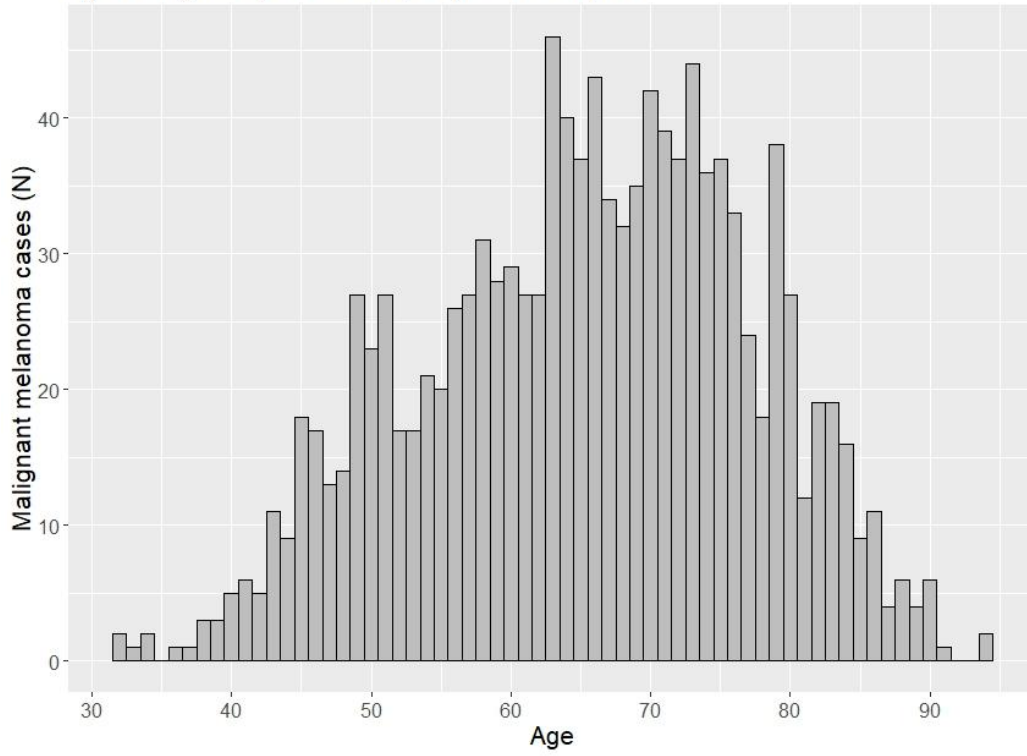
### Number of cases with different types of samples

	EDTA-plasma	Heparin-plasma	Erythrocytes*	Buffy coat*	Extracted DNA
Total	1424	1423	1422	1408	660
≥1 Prospective	1209	1208	1207	1189	585
≥1 Unthawed prospective	1076	1133	1108	989	NA
≥2 Prospective	651	649	647	624	118
≥2 Unthawed prospective	550	593	565	450	NA
≥1 Retrospective	361	361	361	359	76
≥1 Retrospective och ≥1 Prospective	146	146	146	140	1

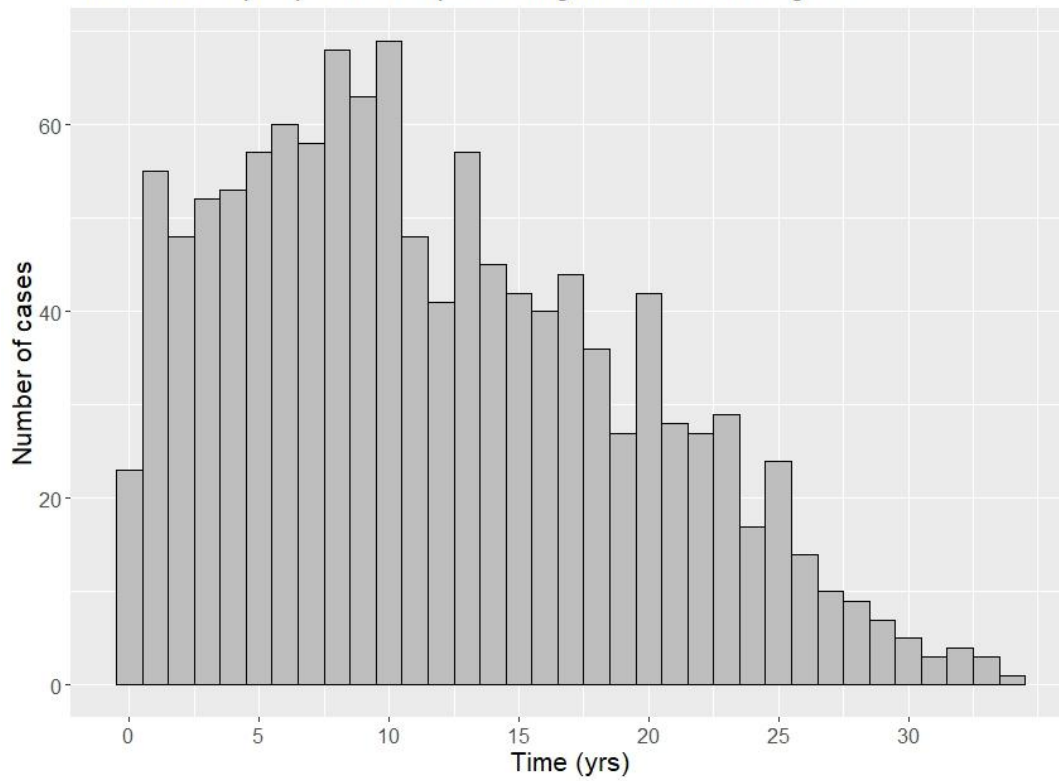
\* Applies to EDTA tubes. For heparin the numbers are similar.



Age at diagnosis, cases with prospective samples



Time from last prospective sample to malignant melanoma diagnosis



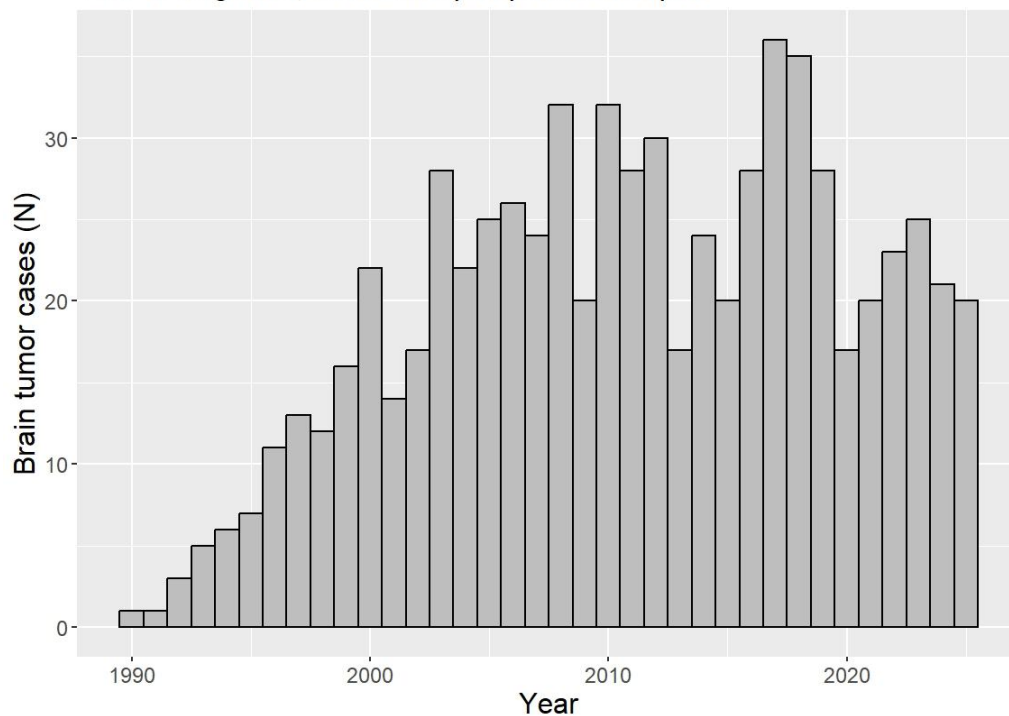
## Brain tumors

### Number of cases with different types of samples

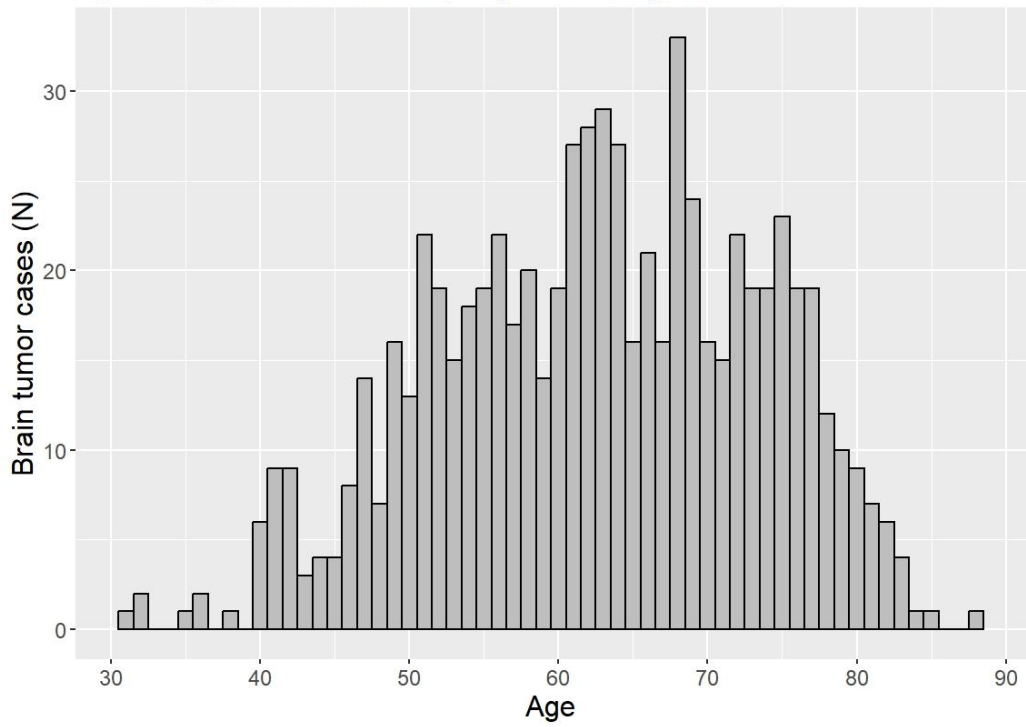
	EDTA-plasma	Heparin-plasma	Erythrocytes*	Buffy coat*	Extracted DNA
Total	930	929	921	907	558
≥1 Prospective	709	709	699	688	446
≥1 Unthawed prospective	492	628	640	450	NA
≥2 Prospective	377	377	374	360	162
≥2 Unthawed prospective	253	324	332	190	NA
≥1 Retrospective	316	315	315	311	122
≥1 Retrospective och ≥1 Prospective	95	95	93	92	10

\* Applies to EDTA tubes. For heparin the numbers are similar.

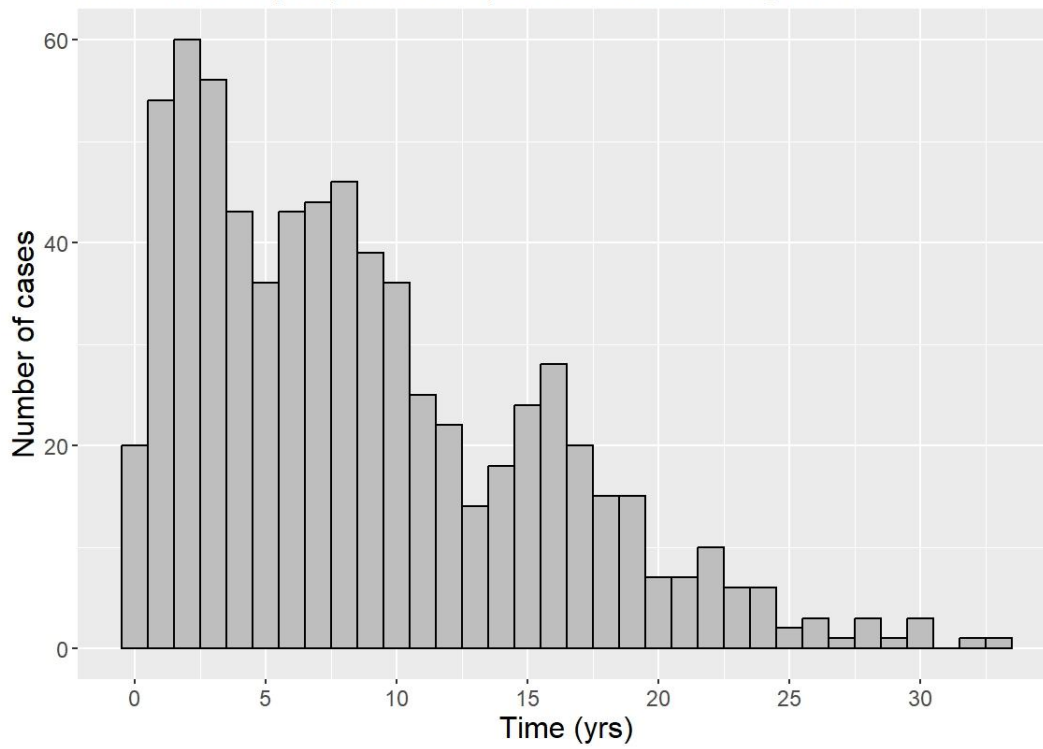
### Year of diagnosis, cases with prospective samples



Age at diagnosis, cases with prospective samples



Time from last prospective sample to brain tumor diagnosis



## Hematological malignancies

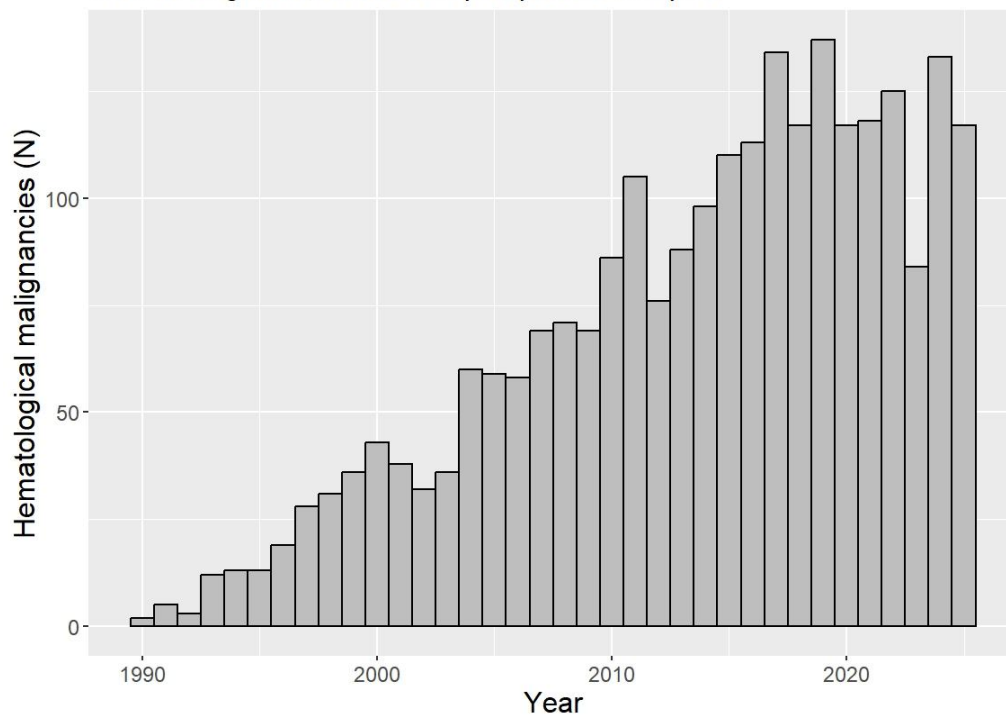
### Number of cases with different types of samples

	EDTA-plasma	Heparin-plasma	Erythrocytes*	Buffy coat*	Extracted DNA
Total	2712**	2709	2699	2676	1707
≥1 Prospective	2455	2454	2441	2414	1543
≥1 Unthawed prospective	2006	2265	2049	1841	NA
≥2 Prospective	1246	1248	1235	1186	298
≥2 Unthawed prospective	920	1117	1012	751	NA
≥1 Retrospective	443	443	442	440	180
≥1 Retrospective and ≥1 Prospective	186	188	184	178	16

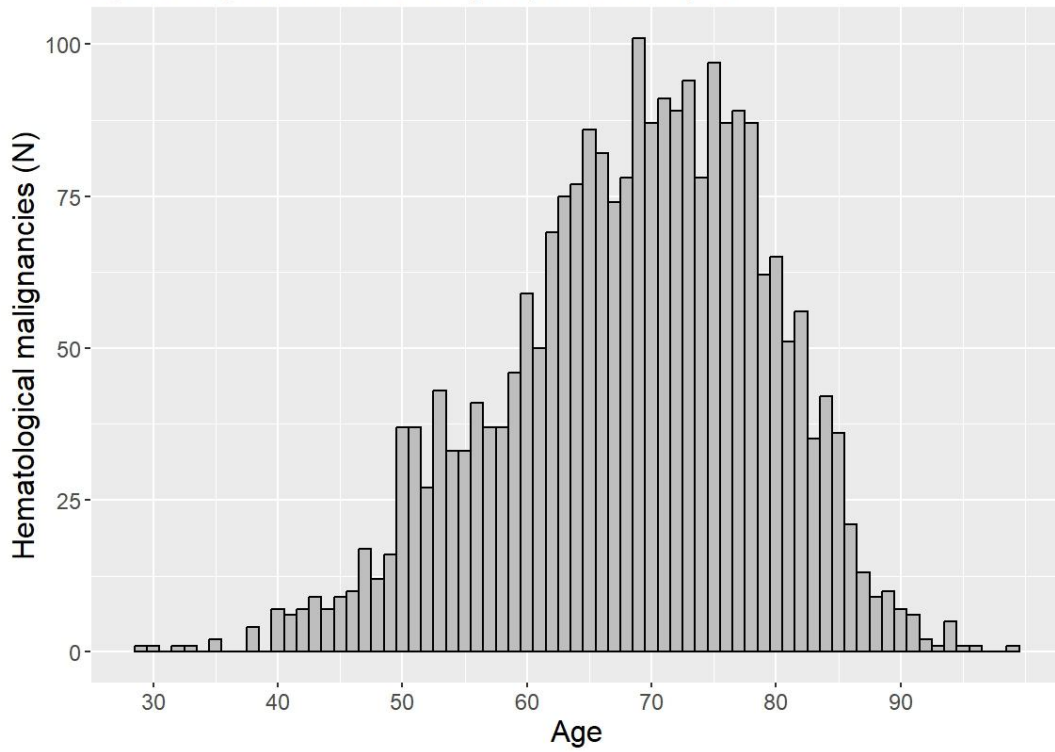
\* Applies to EDTA tubes. For heparin the numbers are similar.

\*\* For individual diagnoses included in this group, there are 511 myeloma cases, 347 CLL cases, 311 AML/MDS cases and 1200 lymphomas, of which 103 are non-Hodgkin's lymphomas.

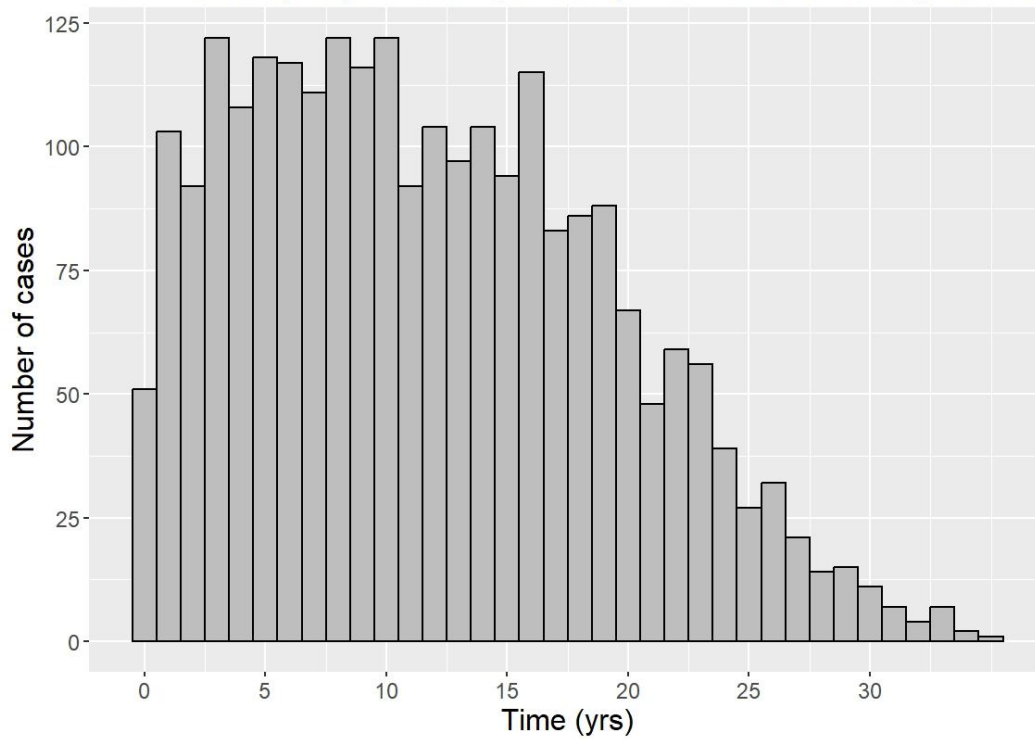
Year of diagnosis, cases with prospective samples



Age at diagnosis, cases with prospective samples



Time from last prospective sample to diagnosis of hematom. malignancies



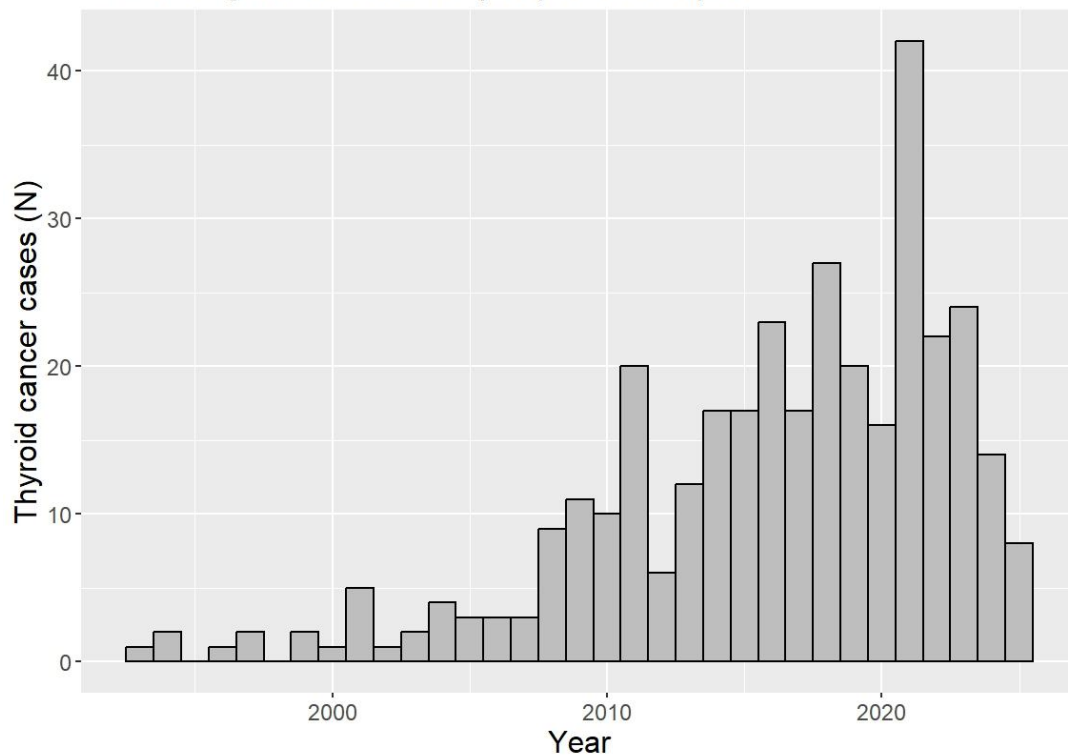
## Thyroid cancer

### Number of cases with different types of samples

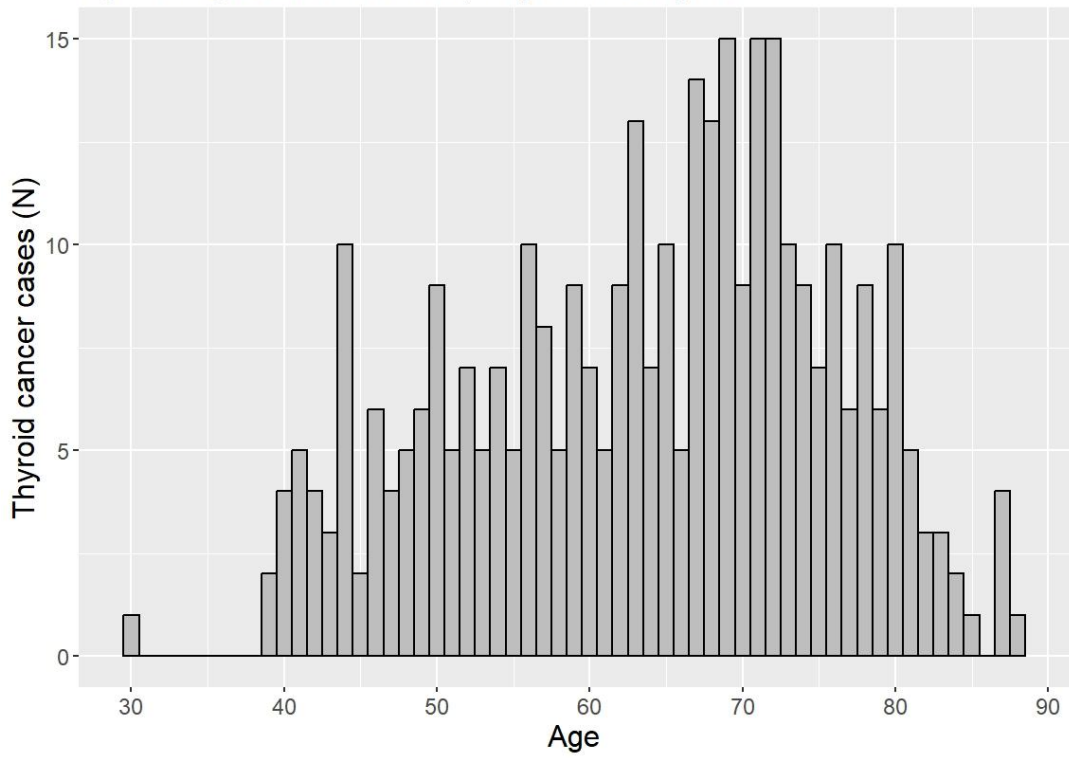
	EDTA-plasma	Heparin-plasma	Erythrocytes*	Buffy coat*	Extracted DNA
Total	381	381	381	379	144
≥1 Prospective	336	336	336	334	141
≥1 Unthawed prospective	316	327	315	288	NA
≥2 Prospective	172	172	172	167	24
≥2 Unthawed prospective	154	164	150	129	NA
≥1 Retrospective	83	83	83	83	4
≥1 Retrospective och ≥1 Prospective	38	38	38	38	1

\* Applies to EDTA tubes. For heparin the numbers are similar.

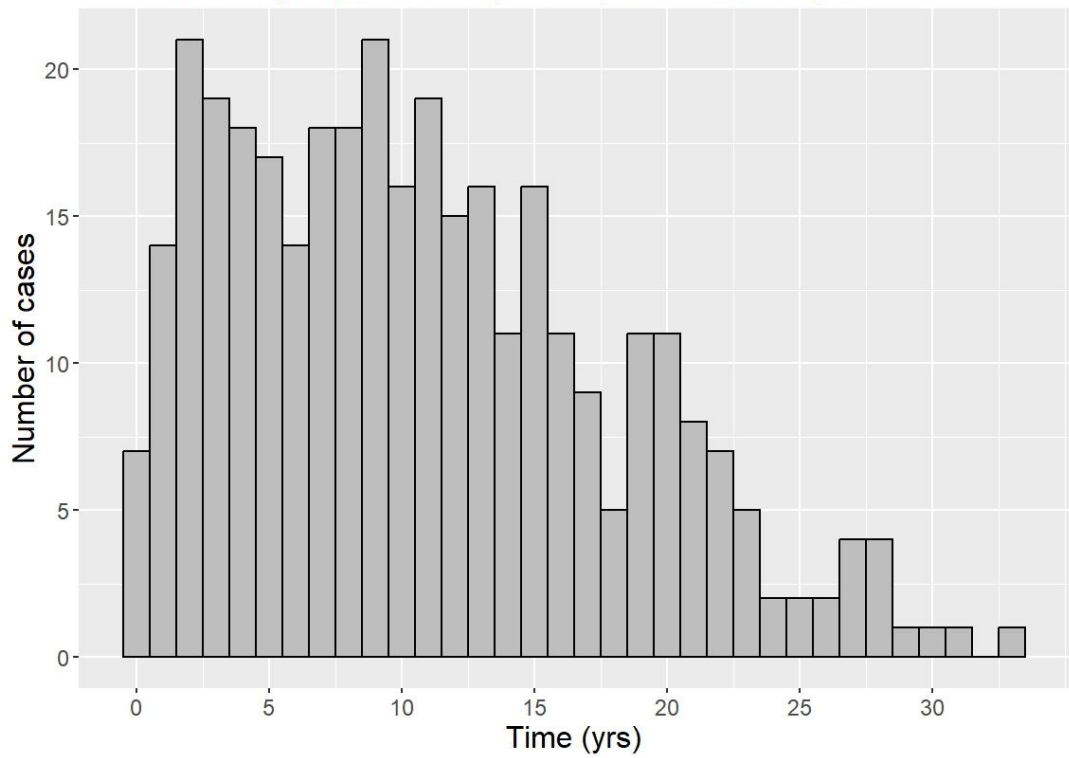
### Year of diagnosis, cases with prospective samples



Age at diagnosis, cases with prospective samples



Time from last prospective sample to thyroid cancer diagnosis



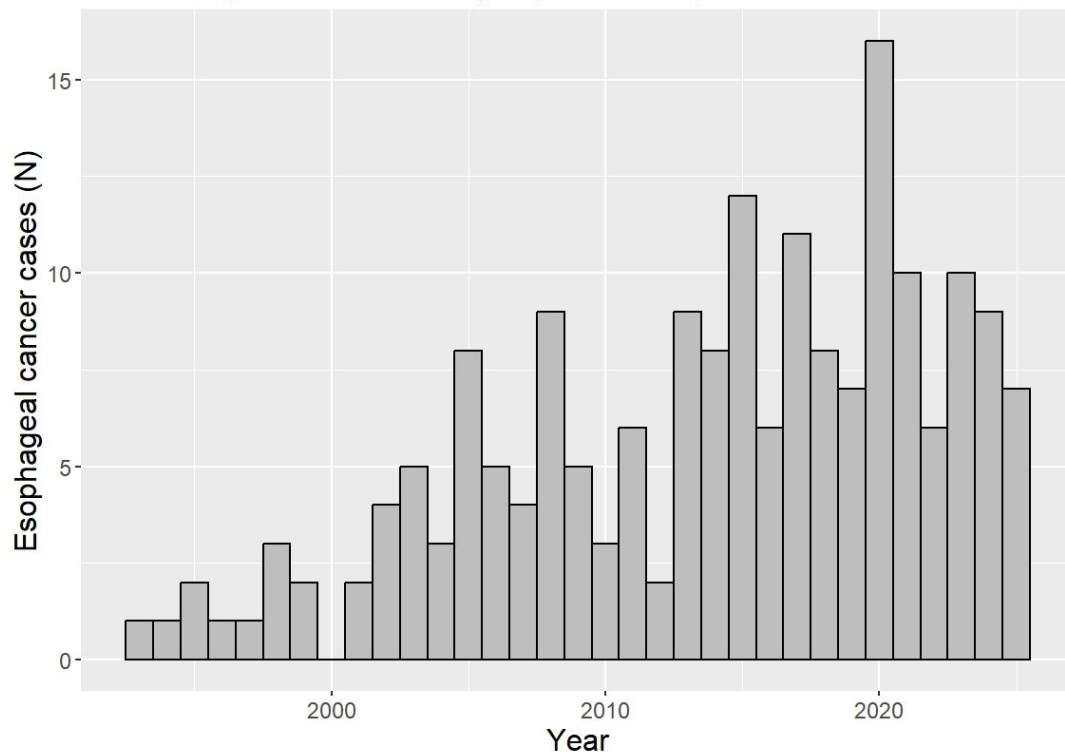
## Esophageal cancer

### Number of cases with different types of samples

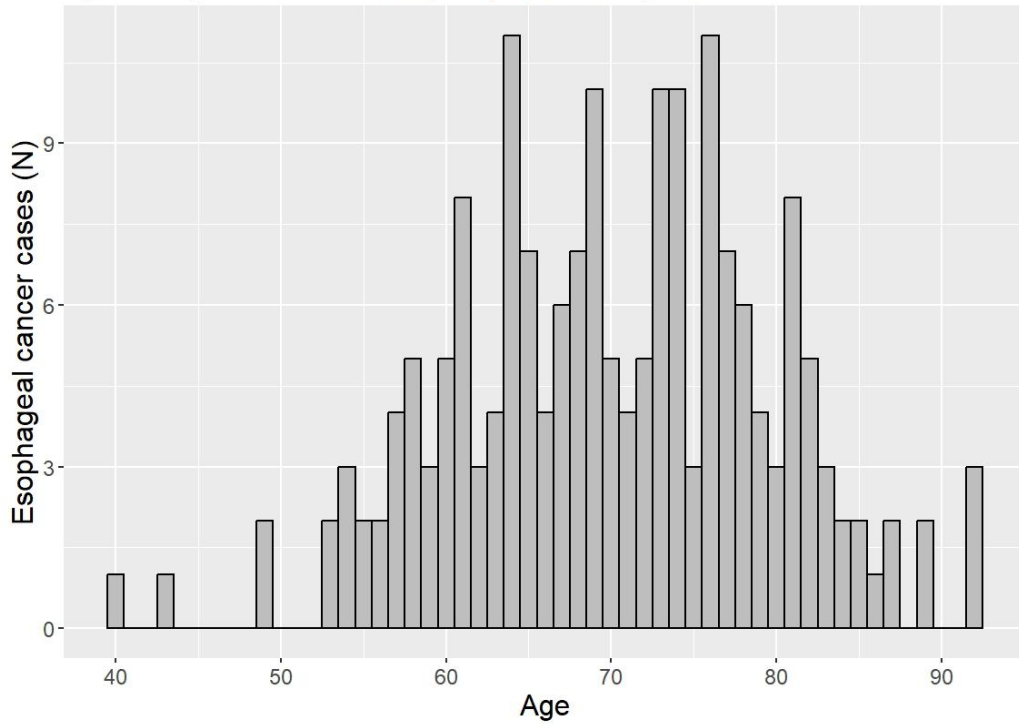
	EDTA-plasma	Heparin-plasma	Erythrocytes*	Buffy coat*	Extracted DNA
Total	186	187	187	180	112
≥1 Prospective	186	187	187	180	112
≥1 Unthawed prospective	140	164	159	139	NA
≥2 Prospective	78	78	78	77	16
≥2 Unthawed prospective	54	67	57	42	NA
≥1 Retrospective	4	4	4	4	0
≥1 Retrospective och ≥1 Prospective	4	4	4	4	0

\* Applies to EDTA tubes. For heparin the numbers are similar.

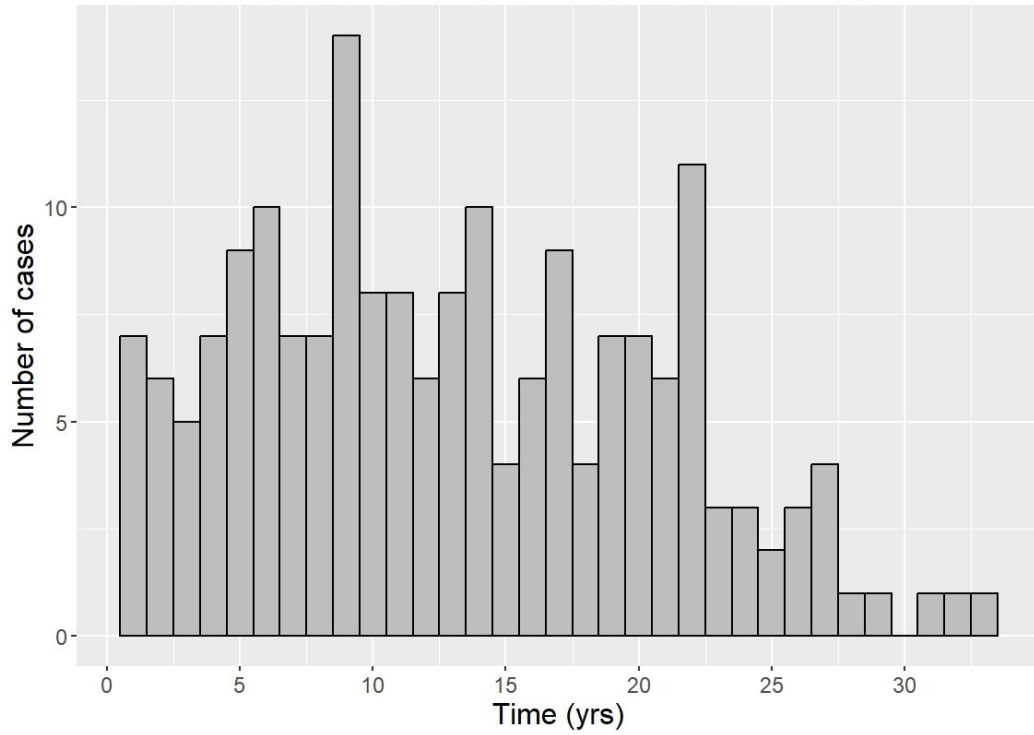
### Year of diagnosis, cases with prospective samples



Age at diagnosis, cases with prospective samples



Time from last prospective sample to esophageal cancer diagnosis

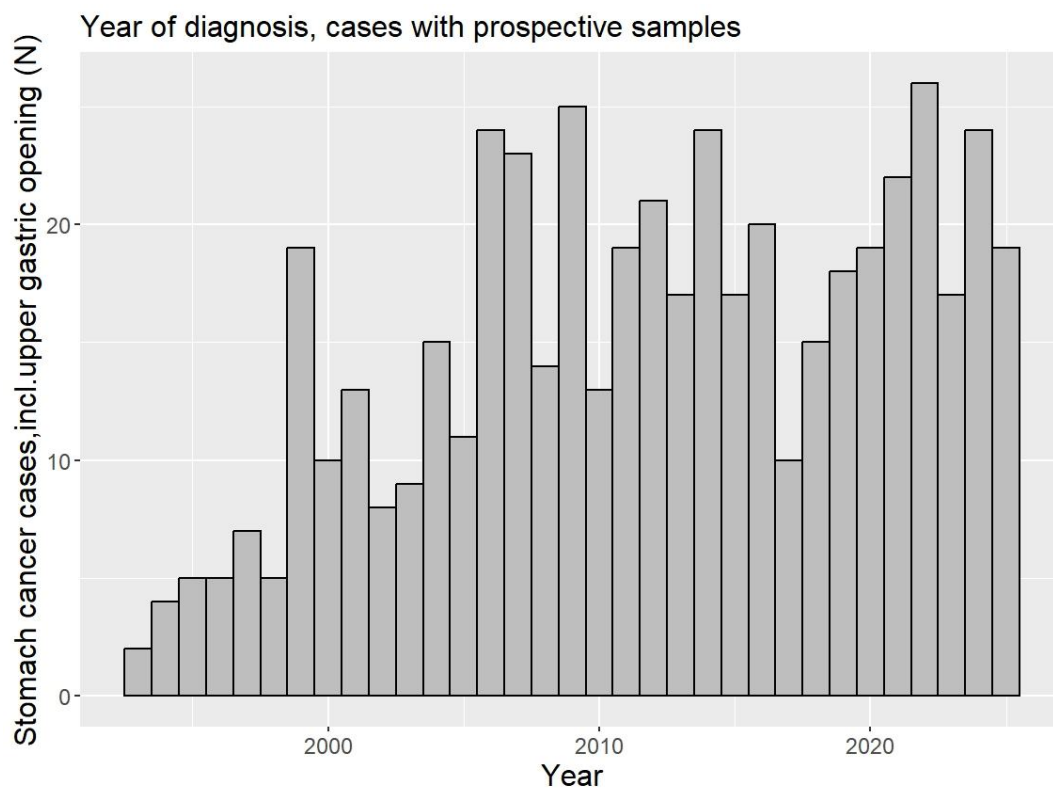


## Stomach cancer, including upper gastric orifice

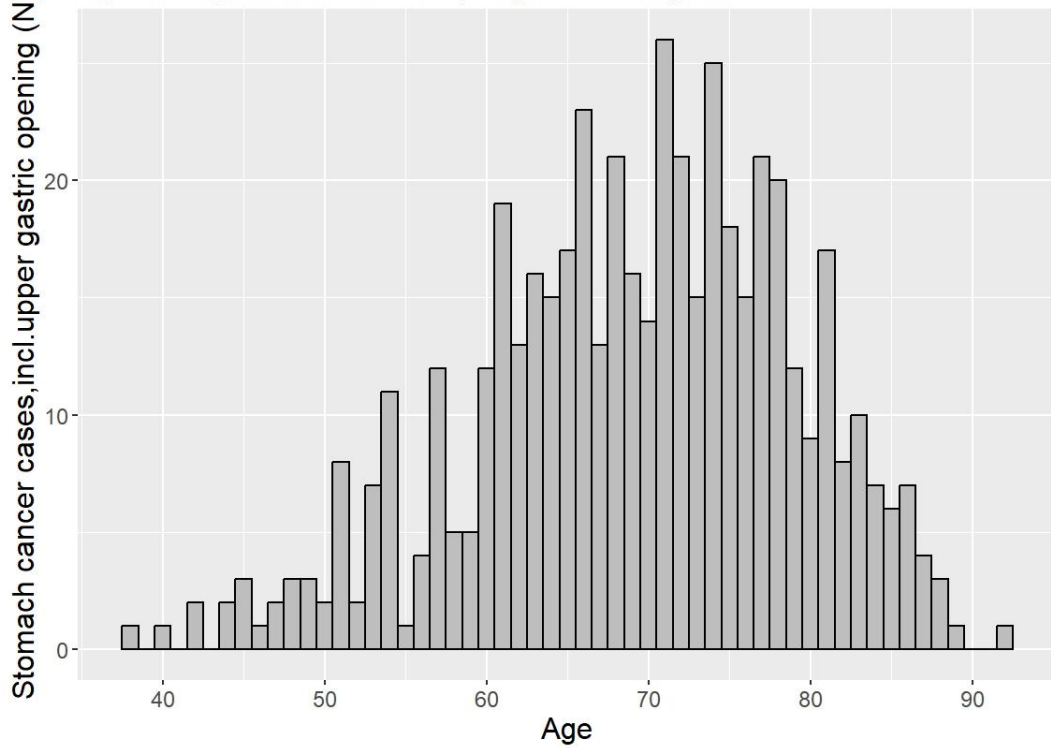
### Number of cases with different types of samples

	EDTA-plasma	Heparin-plasma	Erythrocytes*	Buffy coat*	Extracted DNA
Total	508	504	504	485	308
≥1 Prospective	500	496	496	478	304
≥1 Unthawed prospective	390	435	430	375	NA
≥2 Prospective	225	226	221	214	39
≥2 Unthawed prospective	166	192	175	149	NA
≥1 Retrospective	21	21	21	20	4
≥1 Retrospective och ≥1 Prospective	13	13	13	13	0

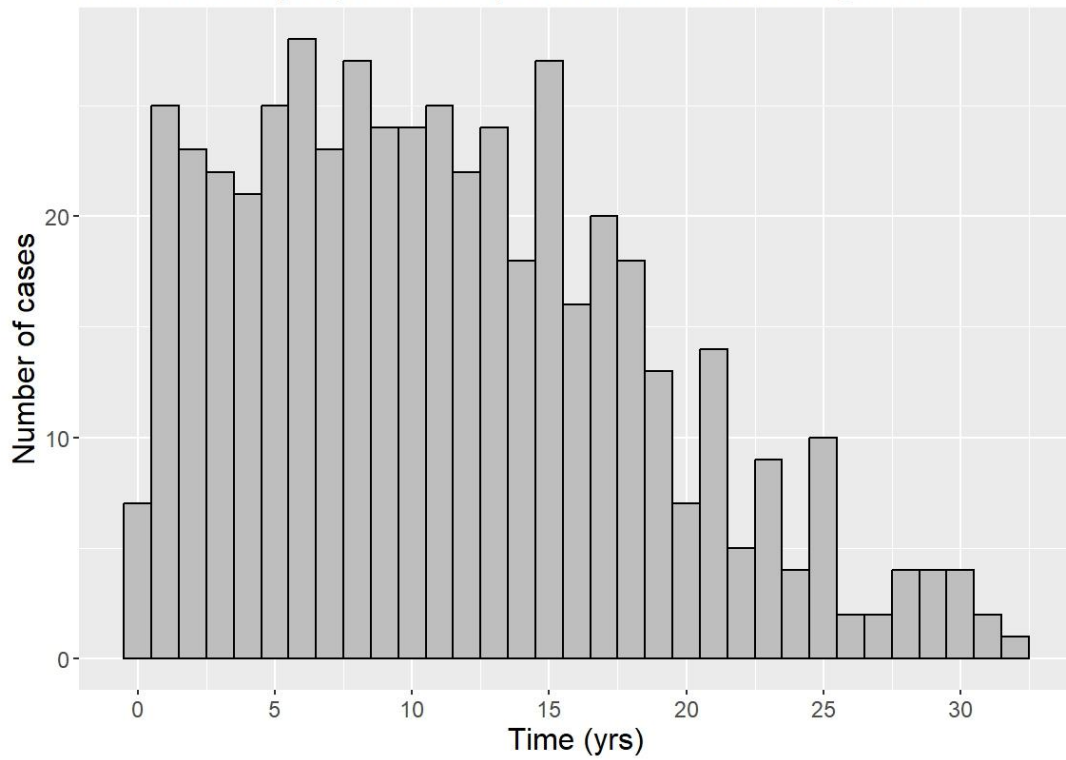
\* Applies to EDTA tubes. For heparin the numbers are similar.



Age at diagnosis, cases with prospective samples



Time from last prospective sample to stomach cancer diagnosis



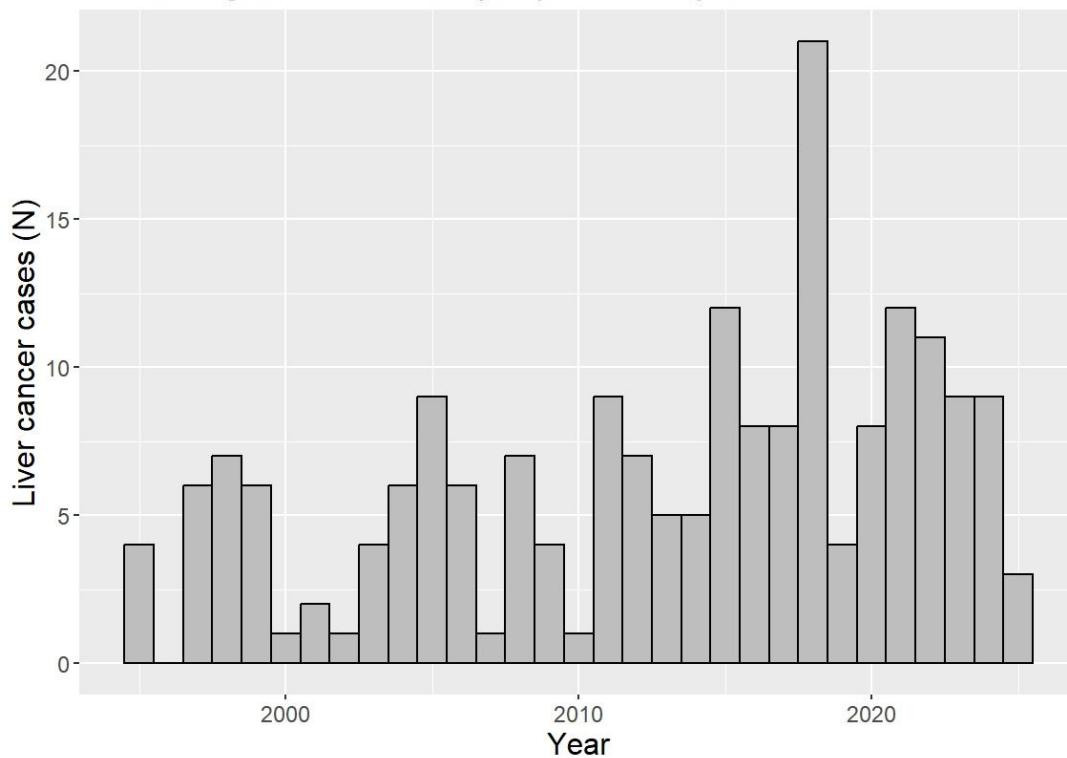
## Liver cancer

### Number of cases with different types of samples

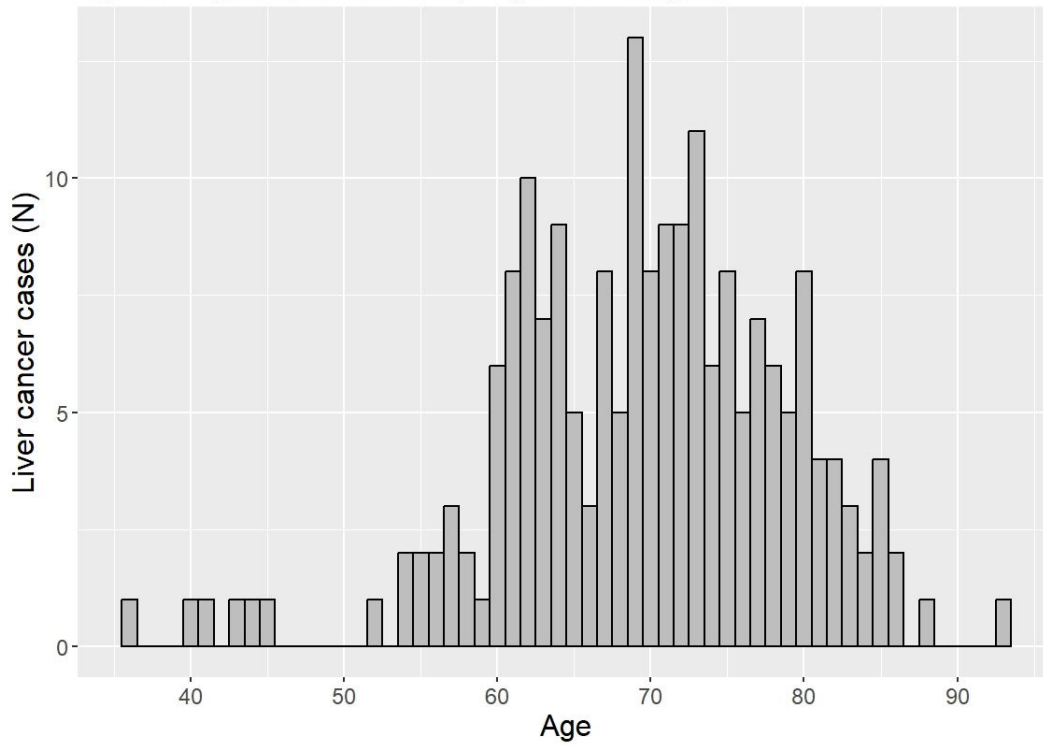
	EDTA-plasma	Heparin-plasma	Erythrocytes*	Buffy coat*	Extracted DNA
Total	198	199	198	193	112
≥1 Prospective	196	197	196	191	112
≥1 Unthawed prospective	156	175	170	153	NA
≥2 Prospective	93	92	91	89	9
≥2 Unthawed prospective	65	75	73	56	NA
≥1 Retrospective	5	5	5	5	0
≥1 Retrospective och ≥1 Prospective	3	3	3	3	0

\* Applies to EDTA tubes. For heparin the numbers are similar.

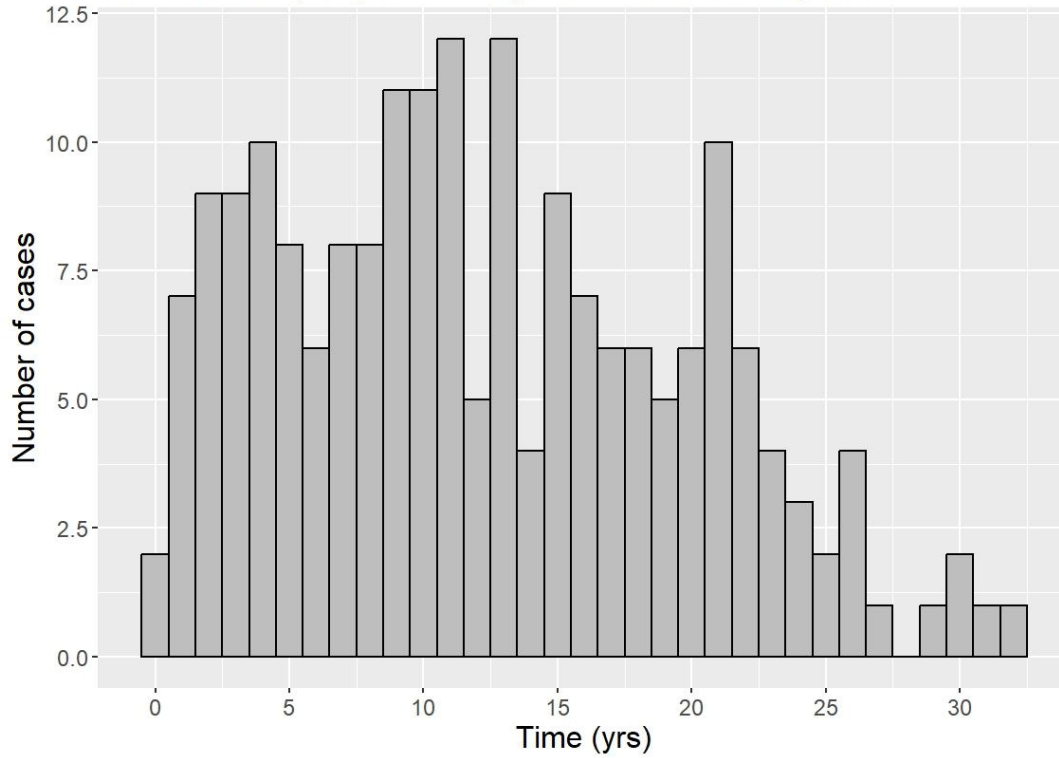
### Year of diagnosis, cases with prospective samples



Age at diagnosis, cases with prospective samples



Time from last prospective sample to liver cancer diagnosis



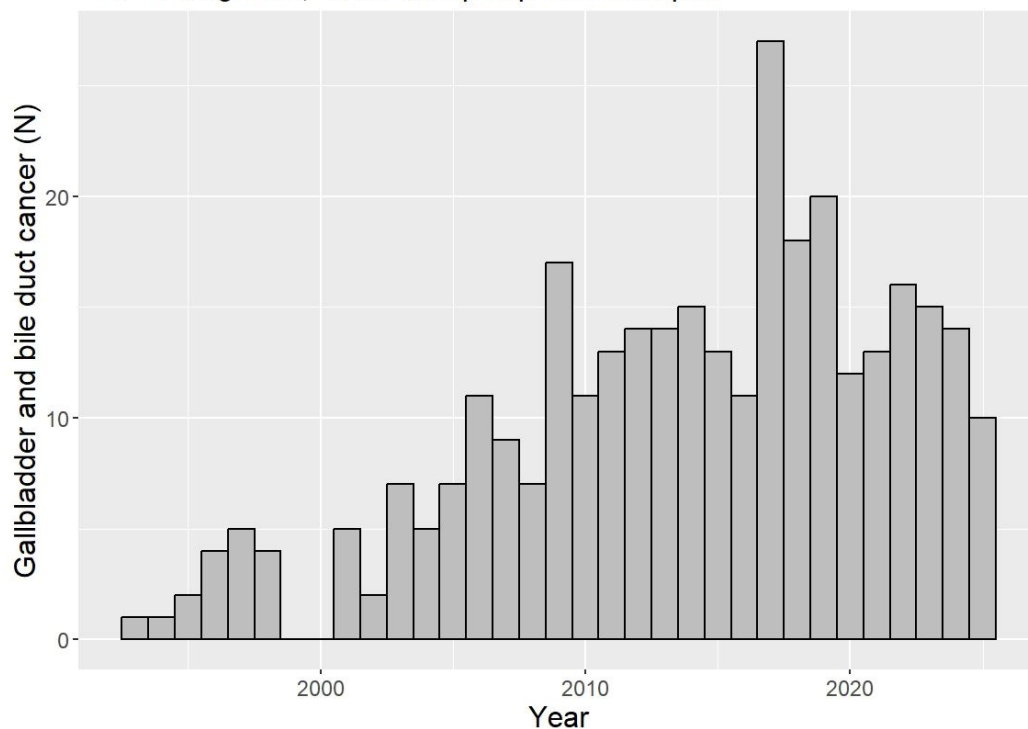
## Gallbladder and bile duct cancer

### Number of cases with different types of samples

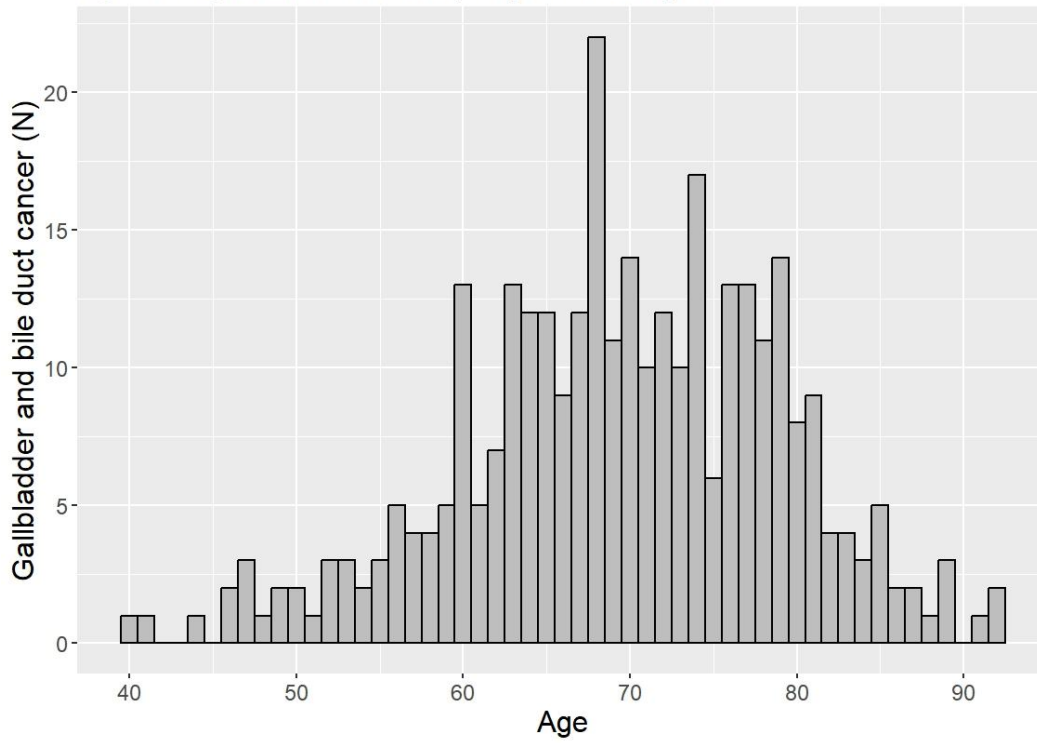
	EDTA-plasma	Heparin-plasma	Erythrocytes*	Buffy coat*	Extracted DNA
Total	326	327	324	321	182
≥1 Prospective	323	324	321	318	182
≥1 Unthawed prospective	275	297	290	267	NA
≥2 Prospective	197	198	196	193	28
≥2 Unthawed prospective	153	177	162	125	NA
≥1 Retrospective	4	4	4	4	0
≥1 Retrospective och ≥1 Prospective	1	1	1	1	0

\* Applies to EDTA tubes. For heparin the numbers are similar.

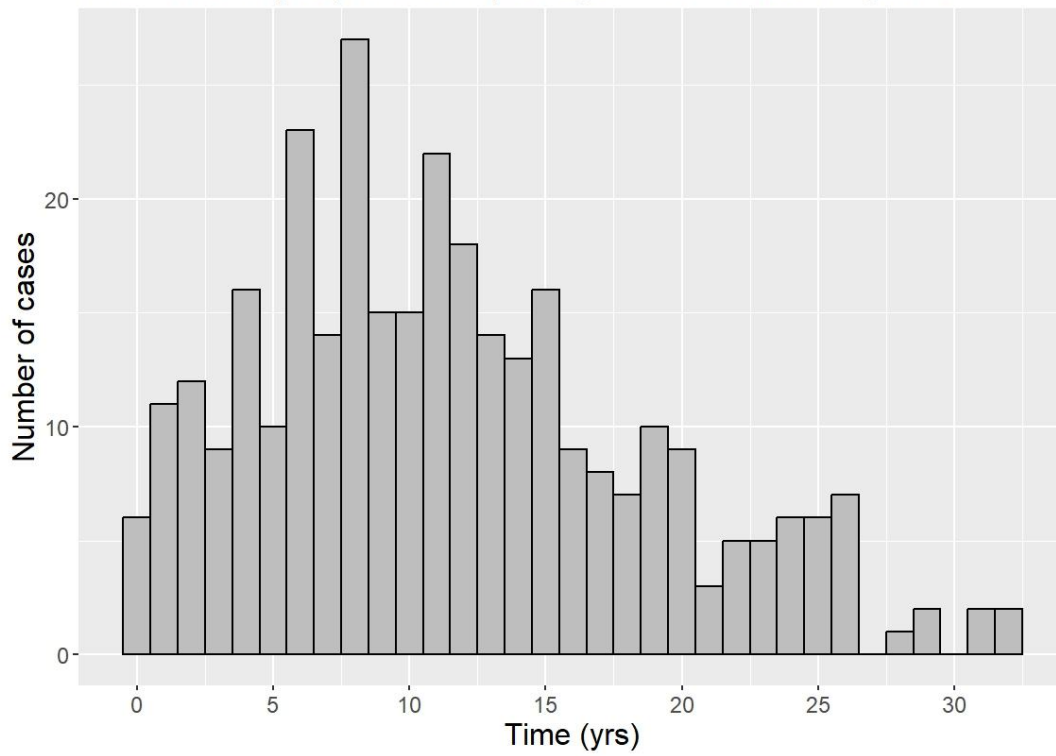
### Year of diagnosis, cases with prospective samples



Age at diagnosis, cases with prospective samples



Time from last prospective sample to gallbladder cancer diagnosis



## All malignant cancers

### Number of cases with different types of samples

	EDTA-plasma	Heparin-plasma	Erythrocytes*	Buffy coat*	Extracted DNA
Total	27022	27002	26902	26463	16263
≥1 Prospective	24046	24022	23866	23452	14656
≥1 Unthawed prospective	18395	20761	20446	18077	NA
≥2 Prospective	12261	12271	12195	11639	2355
≥2 Unthawed prospective	9061	10568	10039	7839	NA
≥1 Retrospective	5113	5111	5106	5053	1749
≥1 Retrospective och ≥1 Prospective	2137	2131	2070	2042	142

\* Applies to EDTA tubes. For heparin the numbers are similar.

