

SUSTAINABILITY REPORT 2025



UMEÅ UNIVERSITY

Content

Foreword.....	3
Content of the report.....	4
The University and the SDGs in brief	5
Umeå University's share of the research produced in Sweden.....	6
SDG 1 No poverty	7
SDG 2 Zero hunger	8
SDG 3 Good health and well-being.....	10
SDG 4 Quality education.....	12
SDG 5 Gender equality.....	14
SDG 6 Clean water and sanitation.....	16
SDG 7 Affordable and clean energy.....	18
SDG 8 Decent work and economic growth	20
SDG 9 Industry, innovation and infrastructure.....	22
SDG 10 Reduced inequalities.....	24
SDG 11 Sustainable cities and communities.....	26
SDG 12 Responsible consumption and production.....	28
SDG 13 Climate action.....	30
SDG 14 Life below water.....	32
SDG 15 Life on land	34
SDG 16 Peace, justice and strong institutions.....	36
SDG 17 Partnerships for the goals	38

Sustainability report for Umeå University 2025

FS 1.6.2-2134-25

Complied by the Property Management Office, Umeå University, 2026.

Email: hallbarhetsfunktionen-umu@umu.se

Cover image: Mattias Pettersson.

Layout: Communications Office, Umeå University, 2026.

Foreword

As a higher education institution, Umeå University has a particular responsibility in the transition to a sustainable society. We must contribute towards a climate-neutral society and support the implementation of Agenda 2030. Through education, research and collaboration, we contribute to knowledge that not only describes the world as it is, but also shapes the world as it can be.

Sustainable development is not a separate area of our activities, but is a fundamental starting point for how we think, prioritise and act. As well as integrating sustainability perspectives into our education, research and collaboration, we also want to contribute towards a sustainable, climate-neutral society where people can thrive and develop. By ensuring that work for a healthy campus goes hand in hand with work for a sustainable campus, we can demonstrate that we want to take responsibility for the environment while also contributing towards sustainable working and student life. In this way, we also hope that our university will become more vibrant and attractive.

The Sustainability Report for Umeå University 2025 is the University's fourth sustainability report. In it, we present a selection of the activities and initiatives linked to the global Sustainable Development Goals that the University has carried out during the year.

This report has been compiled by the University's sustainability function before being approved by the Vice-Chancellor.

We hope this report provides valuable insights and inspiration.

Content of the report

The Sustainability Report 2025 provides an overview of how Umeå University contributes towards the UN's global Sustainable Development Goals (SDGs). By highlighting education, research, collaboration and other activities aimed at increased sustainability, it provides a picture of how the University contributes and which challenges exist.

The contribution of **education** at the University is illustrated with examples of courses and/or programmes which generate knowledge and skills that can contribute towards a sustainable transition. For some of the SDGs, the number of students graduating at first- and second-cycle levels is also provided. Relevant **research** is reported for SDG1 to SDG16 via the predefined research areas in SciVal, a bibliometric analysis tool based on the Scopus database. The search was limited to publications from 2020 to 2025, and was carried out on 5 January 2026. The results are compared with previous years' results and earlier measurement periods. The number of publications and the field-weighted citation impact (FWCI), which reports citations after taking into account publication differences between subject areas, are quantitative measures of how research contributes towards different global SDGs. Research highlights from projects relevant to the SDGs are

also included. For this year's sustainability report, the operations themselves have also nominated relevant projects and courses/study programmes or other activities. **Collaboration** is exemplified with references to activities and collaborative projects, from local activities to global ones. How the University works via **other activities** to increase sustainability is also described under each SDG. This includes both management and direct and indirect work linked to sustainability, as well as the extent to which the University lives up to its own sustainability goals. For SDG17, a description is provided of various initiatives, forums and arenas that can act as driving forces in the transition.

There are many different ways to evaluate sustainability work. This report provides a brief **reflection** from a sustainability perspective on the University's contribution to each global SDG.

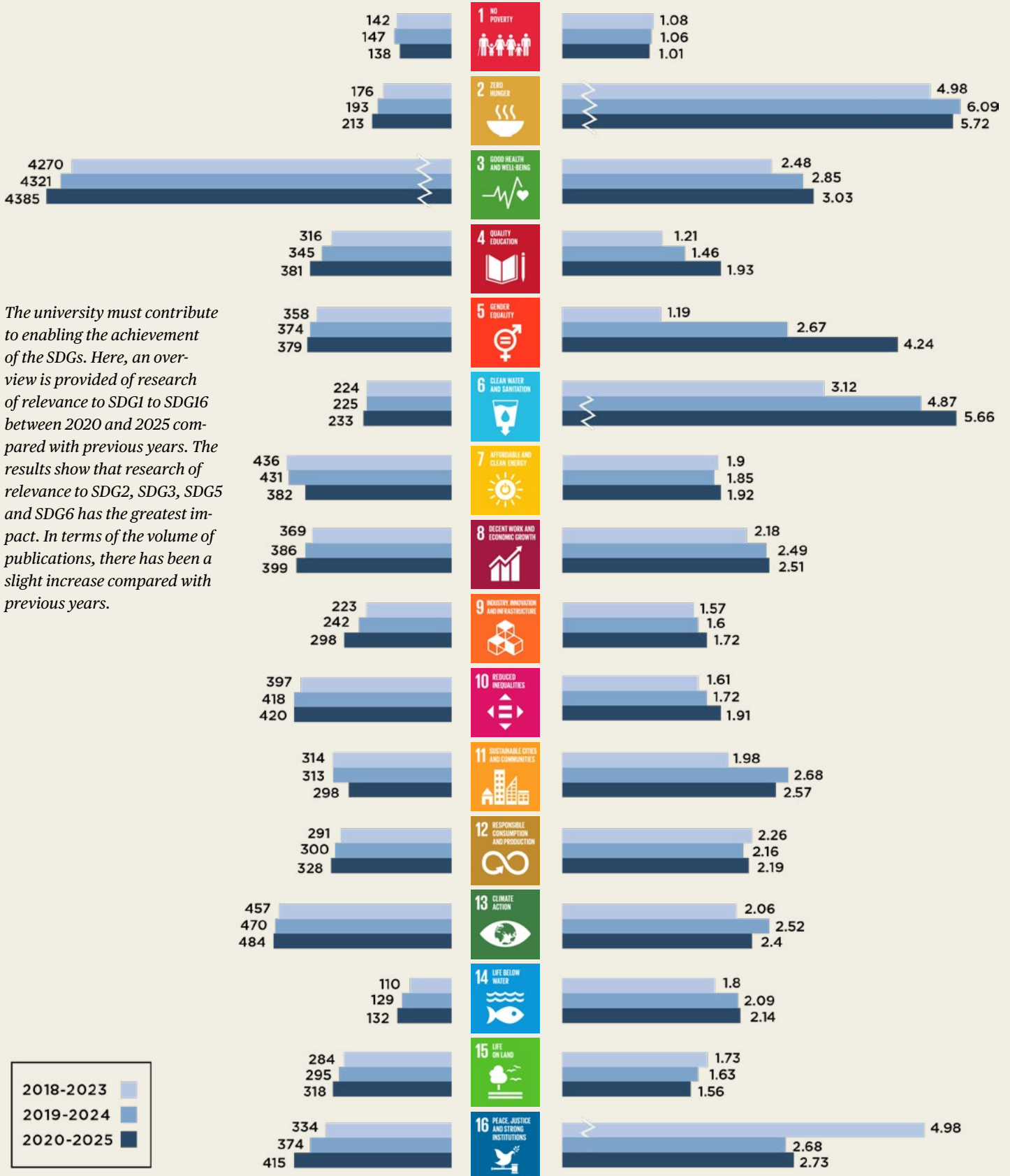
Research publications and citation impact across the SDGs

NUMBER OF PUBLICATIONS

Number of publications in SciVal relevant to each SDG in 2020–2025 compared to 2019–2024 and 2018–2023.

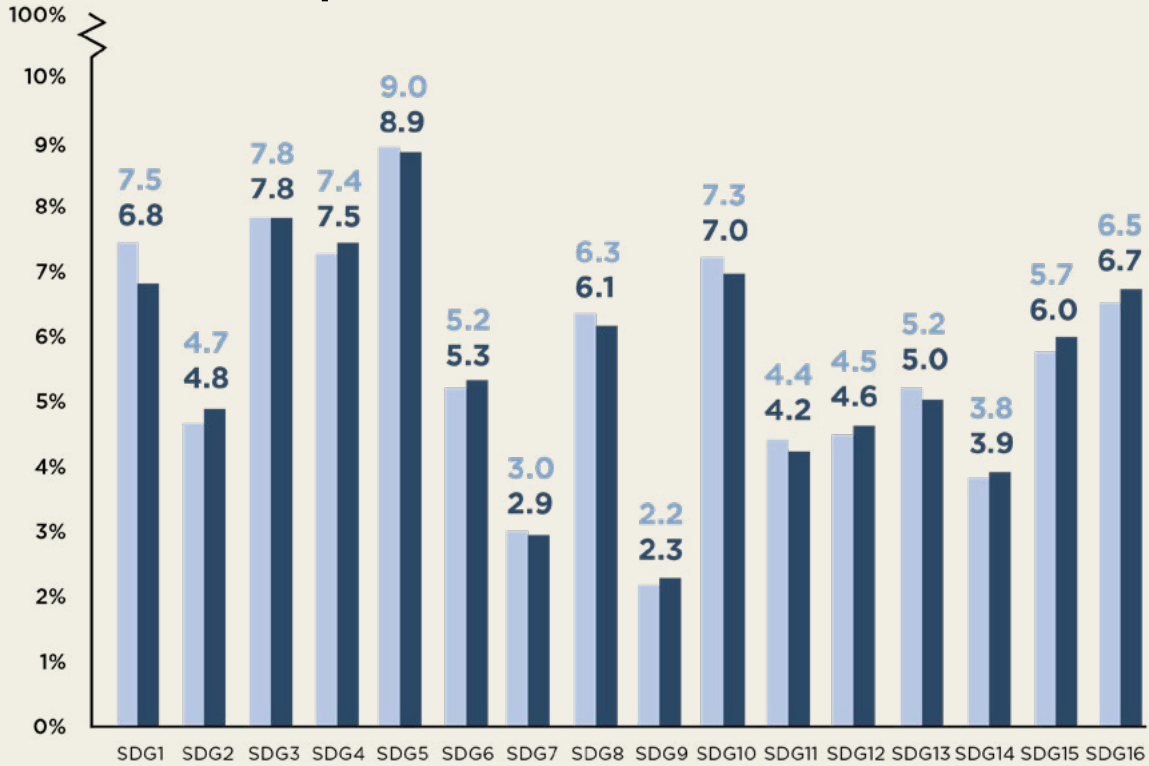
FIELD-WEIGHTED CITATION IMPACT, FWCI

The Field Weighted Citation Impact in SciVal in 2020–2025 compared to 2019–2024 and 2018–2023.



The university must contribute to enabling the achievement of the SDGs. Here, an overview is provided of research of relevance to SDG1 to SDG16 between 2020 and 2025 compared with previous years. The results show that research of relevance to SDG2, SDG3, SDG5 and SDG6 has the greatest impact. In terms of the volume of publications, there has been a slight increase compared with previous years.

Umeå University's share of the research produced in Sweden



The diagram shows Umeå University's share of research production in Sweden for each global SDG (SDG1 to SDG16) for 2019-2024 and 2020-2025 respectively, in accordance with SciVal's classification.

2019-2024 ■
2020-2025 ■

AGENDA 2030 AND THE GLOBAL GOALS





SDG 1 No poverty

Everyone has the right to a safe and dignified life, characterised by freedom, influence, good health, physical safety and access to education. At Umeå University, this means for example that all students – regardless of their background – should have equal opportunities to study here.

EDUCATION

Education of relevance to this goal includes developing knowledge and skills related to social vulnerability, and to relationships and interactions between people and the wider society. *The Markets, Trade and Global Challenges* course focuses on microeconomics linked to markets and international trade. Here, students gain knowledge about the role of the market in relation to resource allocation and how market mechanisms can contribute towards efficient resource allocation.

RESEARCH

Research is carried out within several disciplines, but primarily within social sciences, economics and medicine, where studies are conducted on inequalities such as income distribution and unemployment in Sweden, as well as health in developing countries. Studies are also carried out within technology and natural sciences, and a doctoral project completed during the year demonstrated how improved, cleaner stoves for rural areas in Africa can reduce health risks while also reducing workload. If the solution is scaled up, there is the potential to promote both local development and improved living conditions at societal level.

COLLABORATION

Collaboration takes place within organisations such as *Academic Collaboration Chile Sweden (ACCESS 3.0)*, a network for universities in Sweden and Chile. The network aims to promote increased research collaboration between the two countries. *The South Africa-Sweden University Forum (SASUF 2030)* includes Umeå University and 36 other higher education institutions, as well as organisations and public authorities in both Sweden and South

Africa, with the aim of strengthening links within research, education and innovation. The UN's global SDGs are the focus of both projects.

OTHER ACTIVITIES

In order to reduce inequalities, free activities are offered such as book loans via the university's libraries and exhibitions at the Bildmuseet. The University's outdoor environments include outdoor gyms and training facilities, ski tracks on the campus fields and a skating rink on the Campus Pond in the winter. These can be used by everyone.

REFLECTION

There is only limited relevant education. The number of publications is small and has a low impact for the University, and has also decreased slightly compared with the previous measurement period. There is a lack of formal management in connection with other activities, although the University does offer some activities that can contribute towards the goal.

PUBLICATIONS

138

FWCI

1.01



SDG 2 Zero hunger

Everyone should have access to sufficient and nutritious food. This can be promoted through sustainable agricultural methods, modern technology and fair distribution systems. At the university, researchers collaborate with external actors to develop sustainable food systems.

EDUCATION

Education is provided within areas such as food and culinary sciences, and can involve developing meals with a focus on sustainability, nutritional value and responsibility throughout the entire chain, from production to consumption. Students on the *Food and Nutrition programme* learn to devise sustainable, healthy meals, and to analyse eating habits and the importance of diet for public health. The *Meals in Preschool and School - Pedagogical and Health Perspectives* course focuses on

how meals can promote children's wellbeing and support schools' educational assignment. *Public Health Nutrition for a Changing World* is another course that combines nutrition and public health with knowledge about how climate change will affect the food systems of the future. Together, these educational initiatives contribute towards strengthening competence for sustainable and healthy meals in society.



Photo: Calle Bredberg, Johnér Bildbyrå.

“The 2025 Spring Graduation Ceremony’s climate footprint was more than halved compared with the previous academic ceremony.”

RESEARCH

Research is carried out from several perspectives, and focuses on subjects such as malnutrition, nutritional assessment and sustainable food systems. Within the prioritised research area *NorthFood - Plant Science for Change*, studies examine how the sustainable and resilient food systems of the future can be developed to create new solutions for plant-based food production, stronger food self-sufficiency and sustainable cultivation in a changing climate.

COLLABORATION

Via the *HealthFerm* project, the university is collaborating with other European universities, research institutes and food industry players to develop innovative plant-based fermented foods with improved nutritional profiles and documented health benefits. An important aspect of the project also involves understanding how consumers perceive fermented plant-based products. In 2025, the *Plant-Based Fermented Foods: Present and Future* symposium was held at the University. The event brought together researchers and experts within the fields of microbiology, fermentation, nutrition, social sciences and consumer behaviour to discuss these issues.

OTHER ACTIVITIES

The University has revised the suggestions in its *Guide to sustainable events*. As part of its efforts to arrange more sustainable events, the University focused on serving more sustainable menus at academic annual celebrations in 2025. The 2025 Spring Graduation Ceremony’s climate footprint was more than halved compared with the previous academic ceremony.



Photo: Matias Pettersson.

REFLECTION

Relevant research has increased over time, and SDG2 is now the global goal with the highest citation index of all at Umeå University. The recommendations for sustainable and healthy food and catering alternatives have begun to have an impact. This impact is likely to increase when the University’s catering services are re-procured in 2026.



Guide to sustainable alternatives

A guide to sustainable food and catering alternatives was produced during the year. This is intended to support restaurants, cafés and catering businesses on campus and at Umeå University, with the broader aim of offering students and staff meals that promote both health and sustainability. It was produced in cooperation between the University’s sustainability function, the Healthy Campus project and staff at the Department of Food, Nutrition and Culinary Science.



SDG 3 Good health and well-being

Good health is a fundamental prerequisite in order for people to reach their full potential. Much of Umeå University's education and research also relates to human health. The university strives to ensure sustainable working and student life, and takes a comprehensive approach to health and wellbeing issues via the A Healthy Campus initiative.

EDUCATION

A large proportion of the University's students specialise in medicine and health sciences, and during the year more than 1,300 students graduated with a specialisation in medicine, dentistry and pharmacology - subjects where knowledge contributes towards good health and wellbeing. In order to integrate sustainability perspectives into medical education, the faculty has worked actively with this since 2023 to ensure that students are better able to contribute towards a sustainable societal transition in their professional lives. Today, all medical courses and study programmes are deemed to have integrated this perspective. The faculty has also worked actively to develop its teaching staff's competences.

RESEARCH

Research is particularly extensive at the University, and is dominated by medical studies focusing on asthma, various forms of tumours, the global burden of disease and Covid-19. Taken as a whole, this research strengthens our understanding of how diseases can be prevented and how health can be promoted in a changing society. Discoveries in 2025 include the identification of a thyroid hormone that may play a key role in the development

of prostate cancer, bringing opportunities for new treatment strategies. The University's ALS research has also made significant progress. The *ArctiHealth* project is investigating how exposure to cold temperatures during outdoor work affects health and the work environment.

COLLABORATION

Relevant collaboration is extensive, and takes place at local, regional, national and international levels. For example, the national collaboration platform *Sustainable Health in Partnership (SHIP)* has been launched with the aim of strengthening and accelerating initiatives to tackle complex global challenges with an impact on health. SHIP is run in collaboration with Karolinska Institutet, the Swedish University of Agricultural Sciences, Uppsala University and Örebro University, and connects these institutions with other actors working to promote ecological, social and economic sustainability for health.

OTHER ACTIVITIES

Umeå University is the only Nordic higher education institution to have been certified as a *Healthy Campus*. During the year, an external audit was carried out by the International University Sports Federation (FISU), which is responsible for international certification, resulting in the highest possible level of certification: Platinum. Twice a year, the *Health on Campus* wellness day is held with the aim of increasing interest and creating engagement in physical activity and healthy working and student life. Health on Campus Day also strengthens the social community. In recent years, Health on Campus activities have each attracted between 2,500 and 3,500 participants.

“Collaboration linked to the goal takes place at local, regional, national and international levels.”



REFLECTION

Education linked to the goal is extensive, and also has a significant regional impact. This remains the most extensive research field at the university, and more than half of the University's publications are closely linked to the goal. The highest level of Healthy Campus certification confirms the strength of the coordinated *A Healthy Campus* work, and the University has a long-term focus on promoting a sustainable, healthy study and working environment, and - from a broader perspective - a vibrant and attractive campus.



Student projects for a healthy campus

At the Faculty of Social Sciences, psychology students have contributed towards *A Healthy Campus* through project work. One of their projects resulted in a proposal to offer a bicycle repair workshop on campus each semester to promote sustainable travel all year round. The proposal was realised during the autumn's Health on Campus programme, and proved popular with students.



SDG 4 Quality education

Education at Umeå University must be inclusive, equitable and of good quality, and must promote lifelong learning. All students must acquire knowledge and skills about and for sustainable development so that they can make active contributions towards a sustainable society in their future professional lives.

EDUCATION

Sustainable development must be a cross-cutting perspective in all education, which means that education should cover content related to the three dimensions of sustainability, develop key competences for sustainable development, and be provided using pedagogical approaches that are

compatible with the values underlying sustainable development. Sustainable development is also an important element of teacher education, and during the year almost 600 teacher students at various levels, special needs teachers, study and career counsellors, and students specialising in educational methods graduated at the University.



Photo: Mattias Pettersson.

“Teaching needs to encompass more than just factual knowledge, and emotions, meaningfulness and positive visions of the future are important for inspiring engagement and motivation among students.”

RESEARCH

Research is mainly carried out with a focus on social sciences, including education. A 2025 doctoral thesis shows how the extensive digitisation of schools has affected the professional roles of special educators and special needs teachers and their ability to offer students adequate support. The study highlights both the opportunities and the challenges of digital tools in schools, and reveals a lack of systematic conditions, such as unclear policy guidance and limited competence development. By showing how the demands of digitalisation are reshaping teaching practices, the research contributes important knowledge for reinforcing the quality and equality of education in the digital age.

COLLABORATION

Collaboration is broad, and includes all disciplines. During the year, for example, teacher education in northern Sweden formalised its collaboration in order to offer a broader range of subjects and greater student mobility. The university has also been involved in developing free educational materials on sustainable development for vocational education.

OTHER ACTIVITIES

A follow-up of the University’s sustainability goals for education shows that 96 per cent of degree programmes in 2025 have integrated sustainable development as a cross-cutting perspective. During the year, researchers at the University also participated in a focus group on learning for sustainable development within the Higher Education Institutions’ Climate Network. Additionally, a student from the Subject Teacher Education programme was awarded a prize for the best degree project at Linköping University’s Swedish National Centre

for Science and Technology Education. The thesis showed that teaching needs to encompass more than just factual knowledge, and that emotions, meaningfulness and positive visions of the future are important for inspiring engagement and motivation among students.

REFLECTION

The scope of relevant research has increased compared with previous measurement periods, as has its impact. As sustainable development is a cross-cutting perspective in the University’s quality system for education, this means that the issue is being kept alive. The faculties have implemented various initiatives to make it easier for their programme and course coordinators and teaching staff to highlight sustainability from different perspectives, and to develop the key competences identified by UNESCO as being central to a sustainable transition. However, ongoing efforts in continuing education and more concrete support for teaching staff, such as various tools, are needed.

PUBLICATIONS

381

FWCI

1.93



Student collaboration across borders

The theme for the 2025 *University Pedagogy Conference* was *The Art of Teaching*. The conference included a presentation of the *IICP* collaboration project, in which engineering students from Umeå University and marketing students from Edith Cowan University in Australia have worked together to solve authentic development projects using their combined knowledge and skills. They have worked across national, disciplinary and organisational borders, encountering differences in language, culture, working styles and perspectives – factors that highlight and challenge norms while also enhancing the ability to collaborate equally in global professional environments.



SDG 5 Gender equality

Gender equality is a prerequisite for sustainable and peaceful development, as is everyone's right to live a life that is free from violence and discrimination, and to have equal access to power and influence. At Umeå University, gender equality is a common thread that runs through all our activities.

EDUCATION

Gender equality is a cross-cutting perspective in education at all levels. Some courses have a particularly clear link to this goal, such as the course *Young People, Violence and Gender*, which was launched in 2025. Here, students explore the complexity of violence in different groups, such as girls who use violence, the link between masculinity and violence, and the experiences of young LGBTQ+ people who are exposed to violence and honour-based violence from different gender studies perspectives. In 2025, 64 per cent of the university's students were women and 36 per cent were men.

RESEARCH

Research is carried out within areas such as medicine and social sciences, with a focus on intimate partner violence, sexual health, and health and healthcare inequalities. A project within medicine, *Giving birth under conditions* - discourses on consent, power, and gender in Swedish maternity care, examines women's power and participation in maternity care. The aim is to highlight how gender norms and power structures affect healthcare encounters, and to contribute towards developing

more equitable and rights-based maternity care. Within social sciences, for example, studies are being carried out on how public procurement can be used as a tool to promote gender equality.

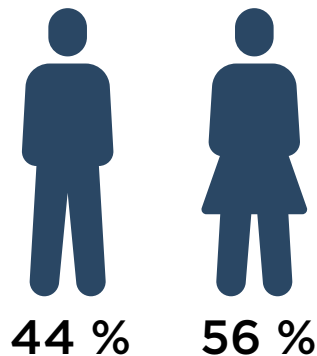
COLLABORATION

Within the regional county strategy *A gender-equal Västerbotten*, the University is collaborating with the county administrative board and other actors in an attempt to reduce gender inequalities by redistributing power between women and men, changing gender stereotypes, and preventing and combating violence against women and girls by men and boys.

OTHER ACTIVITIES

In 2025, 56 per cent of employees were women and 44 per cent were men. For the majority of job categories, the gender distribution is even, within the 40 to 60 per cent range. However, there are imbalances among lecturers, administrative staff and library staff, where the majority are women, and among professors, where the majority are men. In order to increase the proportion of women among professors, the University has been given

"In 2025, 56 per cent of employees were women and 44 per cent were men. For the majority of job categories, the gender distribution is even, within the 40 to 60 per cent range."





a specific recruitment target for the 2025 to 2028 period, whereby 52 per cent of new professors must be women. This target was achieved in 2025, with 67 per cent of recruited professors being women. However, the overall proportion of women remains low, and in 2025 the proportion of female professors was 35 per cent compared to 65 per cent men. The university's operations have worked to achieve an even gender distribution among students during the year.

REFLECTION

The impact of research has increased compared with previous measurement periods, and is one of the highest ever for the University. Here, there is continuity and security thanks to Umeå Centre for Gender Studies, where gender research from all

of the University's faculties is brought together in a cohesive organisation. In terms of other activities, gender equality is an aspect that is taken into account to a large extent. However, there are still challenges in achieving the goals of an even gender distribution, which is why this work needs to continue.

PUBLICATIONS

379

FWCI

4.24



SDG 6 Clean water and sanitation

Access to – and sustainable management of – water and sanitation for all needs to be ensured. Water pollution must be reduced, and in turbulent times there must be a focus on improving the security of waterworks and water reservoirs. At Umeå University, research is carried out on various aquatic environments, their status and changes.

EDUCATION

The Master of Science Programme in Engineering Chemistry is characterised by the sustainability perspective. In one module, students learn about the purification and reuse of wastewater. Environmental chemical aspects of emissions from industry and other societal activities are also highlighted in the programme.

RESEARCH

Research mainly relates to natural sciences, and deals with questions such as how biochar and microalgae can be used in wastewater treatment. Studies also examine how highly sensitive sensors can be used to quickly detect pollutants and antibiotics in watercourses. Additional research is carried out in other disciplines. Within medicine, a doctoral thesis was completed in 2025 on the parasite outbreak in Östersund's drinking water in 2010. The study showed how deficiencies in water and sewerage systems can have lasting consequences for both health and the economy, including long-term health problems and increased social costs of approximately SEK 1.7 billion.

COLLABORATION

The Foundation for Economic Research in Umeå supports research and collaboration at Umeå School of Business. The foundation is managed by Handelsbanken, and has an investment profile based on responsible investment. Investments are made in future-proof indices and funds that focus on sustainable solutions, including the *Fidelity Sustainable Water & Waste Fund*, which invests in companies that address challenges within water and waste.

OTHER ACTIVITIES

In 2025, Umeå Institute of Design decided to certify an international event, the *Cirrus Network Meeting*, with the Swedish Water & Wastewater Association's *Kranmärkt* sustainability label. By choosing tap water instead of bottled water, both energy consumption and climate impact can be reduced. The initiative thereby highlighted the importance of protecting clean drinking water as a sustainable resource.

REFLECTION

Research of relevance to this goal has increased in terms of both its scope and its impact over the years, and research linked to SDG6 now has the second highest citation index of all the goals. Education is limited, as are other activities. There is potential for improvement in this area in the coming years.





Photo: Marlene Jónsson.



SDG 7 Affordable and clean energy

Access to sustainable, reliable and renewable energy and clean fuels is essential if many of the global challenges are to be met. Umeå University carries out education, research and collaboration on renewable energy solutions and energy efficiency in the built environment.

EDUCATION

Degree programmes of relevance to this goal include the *Bachelor of Science* and *Master of Science Programmes in Energy Engineering* within the Faculty of Science and Technology. These programmes provide students with the knowledge needed to contribute towards the sustainable energy systems of the future. In 2025, around 50 students graduated with a specialisation in energy

technology. Sustainable energy is also studied from other perspectives, and the *Capitalism, Climate and Crises: Historical Perspectives on the Environment and Economic Development* course teaches students about the historical links between economic development, technological and energy transformation, and climate and environmental issues. They also learn to analyse and evaluate today's climate policy challenges.

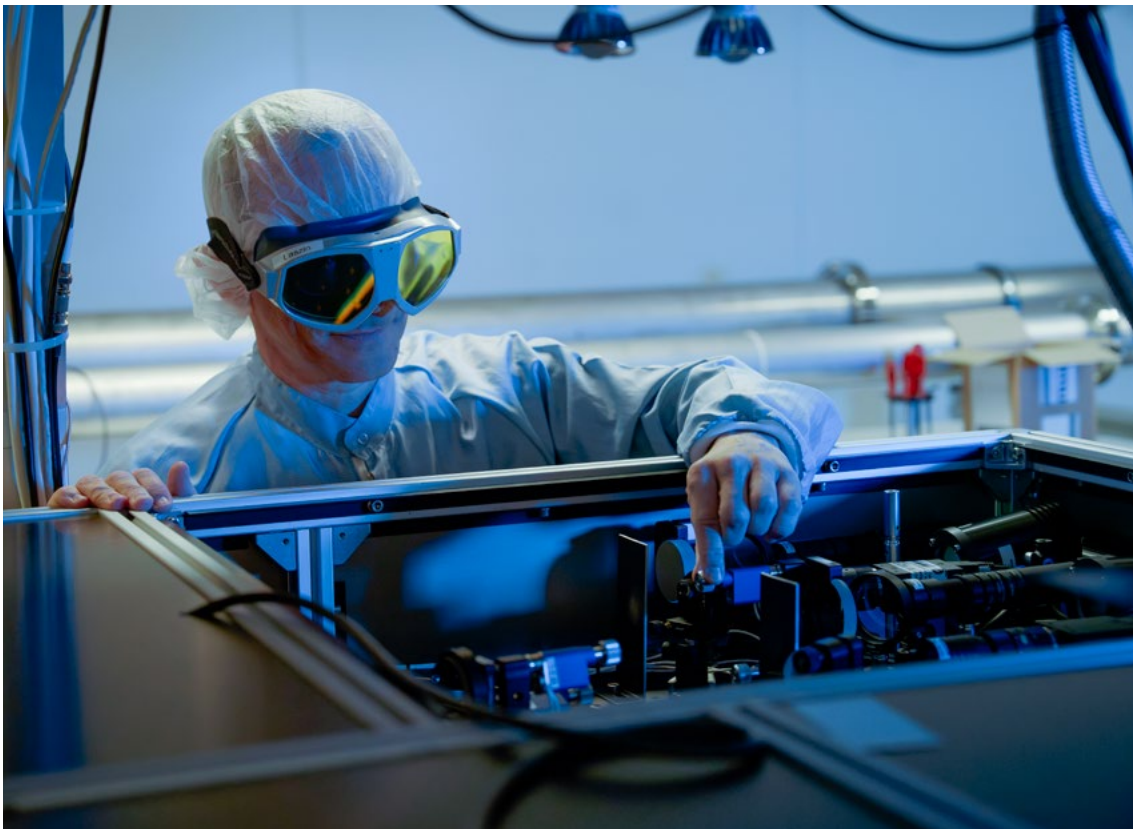


Photo: Mattias Pettersson.



RESEARCH

Research is primarily carried out from a natural sciences perspective, and focuses on how the society of the future can be supplied with clean, safe and sustainable energy. This includes renewable fuels, hydrogen and innovative ways to make energy systems more efficient and climate-smart. In 2025, progress was made in identifying a new function that enables more efficient hydrogen production. This could pave the way for more robust and cost-effective solutions. Research is also being carried out within social sciences and the humanities. The project *Peripheral Visions: When global agendas meet Nordic energy peripheries* analyses how these areas are presented as ‘the right places’ for the clean energy production of the future, and how global energy agendas interact with local contexts, voices and interests.

COLLABORATION

In collaboration between the Research Institute for Organization and Business in Sustainable Transitions (ROBUST) at Umeå School of Business and Hanken School of Economics in Vaasa, a lecture series and a doctoral course on *Critical dialogues on energy transitions in the Bothnia Region* were held. The course aimed to combine research and practice, and to highlight social, ecological and equity aspects. The lecture series brought together views on international perspectives, local consequences, environmental conflicts and opportunities for regenerative societal development.

OTHER ACTIVITIES

In 2025, the university’s total energy consumption was approximately 38 GWh, or just under 120 kWh per m². This represents a reduction compared with previous years, and examples of measures that have contributed towards this include the construction of the new examination building with energy requirements corresponding to the gold standard for Sweden’s Environmental Building certification scheme. Work is also underway to replace all lighting with LED fixtures.

REFLECTION

The impact of research has increased slightly over time, despite a drop in the number of publications. Engineering technology courses and study programmes continue to attract students. Collaboration with property owners is essential in order to reduce and improve energy consumption, and work is ongoing within this area. The energy issue is constantly relevant and work needs to continue, both in terms of reducing energy use in activities with particularly high energy consumption and in day-to-day work.

PUBLICATIONS

382

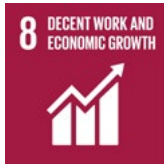
FWCI

1.92



Positive energy districts

The *Positive energy districts* project studies neighbourhoods that produce more energy than they consume. With the help of smart management and local energy production, digital tools are being developed to map and compare these in different municipalities in order to encourage and enable more investors to invest in similar solutions.



SDG 8 Decent work and economic growth

This goal relates to long-term, inclusive and sustainable economic growth, as well as full and productive employment with decent working conditions for everyone. For Umeå University, work of relevance to this goal includes collaborating for sustainable working and student life.

EDUCATION

Education involves aspects such as sustainable leadership and how organisations can develop to meet working life's transition towards greater sustainability. On the *Managing and Organising for Sustainability course*, students are given tools to understand and deal with sustainability challenges in businesses. Sustainable working life is a central aspect of the *Study Programme for Human Resource Management*, on which students learn to understand and analyse the interactions between individuals, groups, organisations and the surrounding world in human resources and working life issues. Questions such as how discrimination, gender and other diversity factors affect working life are also addressed within the programme. During the year, around 60 students graduated from the Study Programme for Human Resource Management.

RESEARCH

Research has a social science focus, and deals in particular with how extensive industrial investments affect regional development, the labour market and working conditions in northern Sweden. The *A promised land?* project studies the driving forces, obstacles and opportunities linked to industrial expansion and the need to attract up to 100,000 new residents, which will shape both development and working conditions. The *InfraMig: Channelling temporary migration to the 'New Green North'* project analyses how temporary labour migration linked to industrial and infrastructure construction affects local communities and social conditions. A third project is investigating the

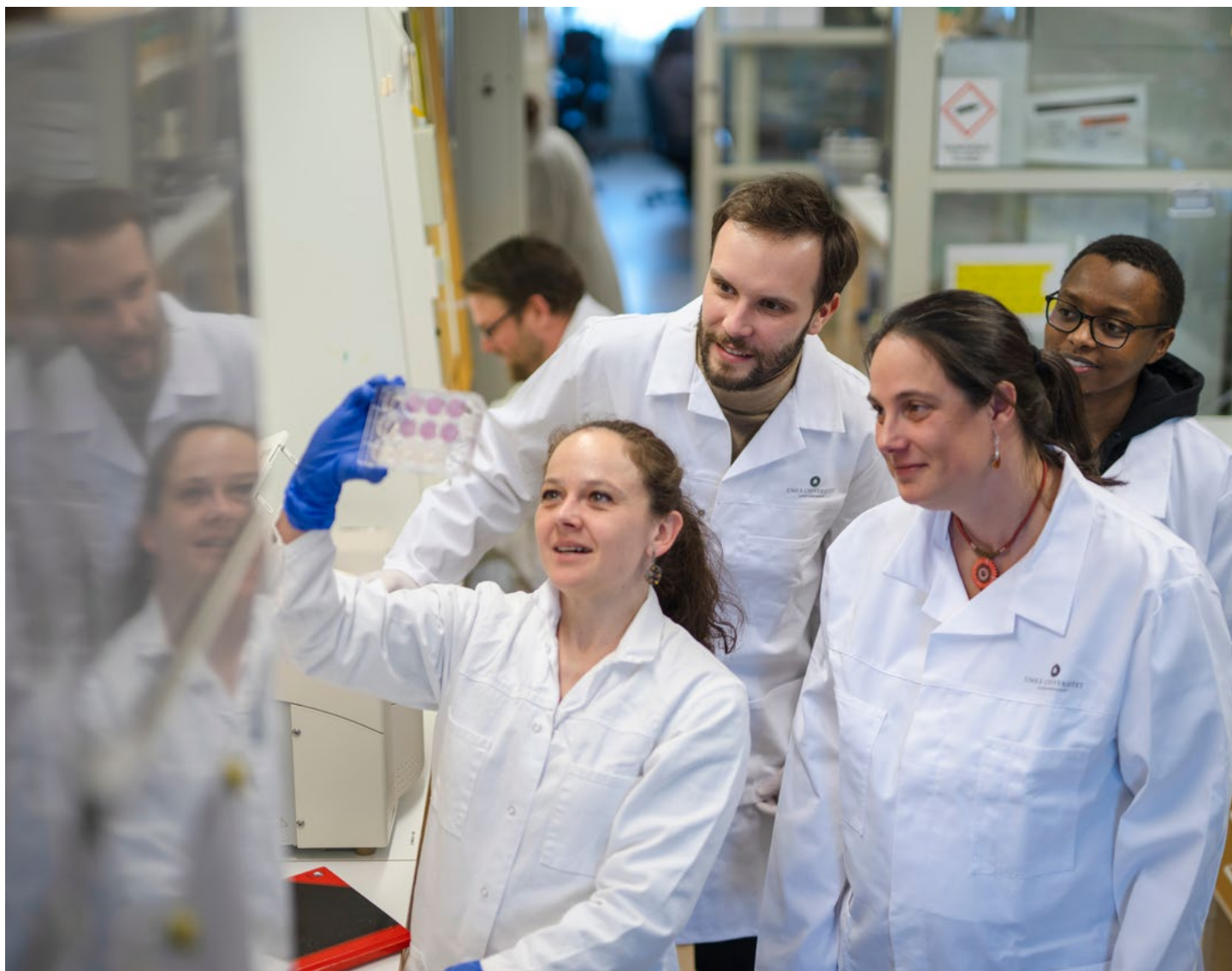
working conditions of reindeer herders, since reindeer herding is currently one of Sweden's riskiest occupations and a large proportion of herders suffer from long-term health problems.

COLLABORATION

In order to contribute towards sustainable competence provision, the University collaborates with regional actors. Through the Co-op programme within the engineering programmes, students gain work experience at an early stage through summer jobs and degree projects in partnership with businesses. The Jobsnack initiative, which runs in collaboration with Umeå and Örnsköldsvik municipalities, gives students the opportunity to meet alumni and employers, and to gain an insight into regional career paths. Through the Umeå School of Business Together seminar series, a dialogue is held between academia and practitioners on socially relevant issues, such as sustainable cooperation, AI and future needs for competences.

OTHER ACTIVITIES

In 2025, a coordination group for sustainable student life was established at the University. The group has a preventive mission and is led by the Student Services Office with the aim of coordinating work on the work environment and equal opportunities from an education provider perspective. Efforts to create safe and inclusive study environments are strengthened by sharing experiences and through coordination, while student union representatives are given influence and the opportunity to highlight needs and areas for development.



REFLECTION

Education and research are carried out within a number of disciplines: social sciences, the humanities and medicine. Social science courses and study programmes address issues relating to sustainable and decent working conditions and economic growth, while those within medicine address working life from a health perspective. The relevance of research has increased compared with the previous measurement period, in terms of both scope and impact. With regard to other activities, the

university has made efforts to develop its support operations. New initiatives, such as Umeå School of Business's seminar series, help to keep the issues and discussions alive.

PUBLICATIONS

399

FWCI

2.51



FinnFram addresses future challenges

The research school *Finding paths in a time of major future challenges (FinnFram)* was launched in 2025 in collaboration with the universities of Stockholm, Gothenburg and Malmö. FinnFram aims to strengthen the scientific knowledge base for career guidance, career education and guidance training, in order to better equip individuals for future study and career choices. The focus is based on the fact that career paths have now become harder to establish, and are both complex and risky. This particularly affects those who lack upper secondary education, those whose parents have low levels of education, those with a non-Nordic background and those who have a functional variation. The research school also contributes towards the development of the international research field.



SDG 9 Industry, innovation and infrastructure

Innovation, resilient infrastructure, and inclusive and sustainable industrialisation are all needed if future challenges are to be met. The University can act as a regional driving force, and can contribute towards this goal by delivering solutions to complex problems and by providing society with a highly educated workforce that can meet the needs of the future.

EDUCATION

Relevant education is provided through courses such as *Systems Thinking*. Here, students studying behavioural science and systems science learn to identify and analyse – jointly and based on their own perspectives – how digitalisation can both contribute towards and limit inclusive and long-term sustainable societies. Engineering technology courses and study programmes and the Study Programme in Business Administration and Economics are also highly relevant to this goal. During the year, 600 students graduated with a specialisation in economics or a degree in business and economics, and 250 students graduated from one of the University’s engineering programmes.

“The project is developing fibre-reinforced ice structures adapted for Arctic environments and emergency situations, and can contribute towards sustainable architecture and new infrastructure in extreme climates.”

RESEARCH

Research is dominated by technical and natural science studies, but also includes social sciences, medicine and the humanities. The *Humlab* research infrastructure is a resource for researchers, students and partners to develop new digital methods, tools and working practices at the intersection of the humanities, culture and information technology. A project at Umeå School of Architecture is studying how ice can be used as a sustainable building material by combining digital design with simple, reusable moulds made from wood and textiles. The project is developing fibre-reinforced ice structures adapted for Arctic environments and emergency situations, and can contribute towards sustainable architecture and new infrastructure in extreme climates.

COLLABORATION

The University’s Innovation Office runs an annual *Innovation Boot Camp*, where students from different programmes come together to develop business ideas and solutions to current societal challenges. By working in a focused and structured manner with idea development, prototyping and business models, students’ innovation capacity and entrepreneurial skills are strengthened. The prize for the best business plan at Innovation Boot Camp 2025 went to *Jobbjägare*, a service that helps immigrants to find their first job in Sweden.

OTHER ACTIVITIES

During the year, the university's innovation activities continued to integrate sustainability aspects into their processes, with the aim of ensuring that innovations which become commercial are relevant and take sustainability aspects into account. A total of 147 ideas were submitted to the innovation activities in 2025, of which 47 were selected for verification. Ten new limited companies were formed, and 14 new patents or equivalent were applied for.

REFLECTION

The scope of research has increased, while its impact has remained stable. Within education, engineering technology courses and study programmes are important in order to contribute towards the goal, but courses and study programmes within

(circular) economics and entrepreneurship are also highly relevant. Within other activities, innovation activities are essential in order to enable students and employees to develop their ideas that can benefit society. However, there is also the potential here to develop methods and working practices to realise more ideas and new businesses.

PUBLICATIONS

298

FWCI

1.72



Photo: Mattias Pettersson.



SDG 10 Reduced inequalities

The fair distribution of resources and economic, social and political influence forms the foundation for a sustainable society. Inequalities both within and between countries must be reduced. Umeå University works actively to promote equal opportunities for students and staff, and to ensure that there are equal opportunities representatives at all departments and units.

EDUCATION

In order to reduce inequalities within education, the University is working to broaden its recruitment. For example, healthcare courses and study programmes have been decentralised to enable students to study from more locations in northern Sweden. One course that is relevant to this goal is *Global Equality*, which teaches students to analyse different power relations around the world. The *Equality in Policy and Practice* course focuses on gender equality as a political ideal and practice. The course addresses aspects such as the development of the welfare state and its consequences for gender equality. There are also entire degree programmes within social work, psychology and sociology that provide students with skills and knowledge that can reduce inequalities. In 2025, around 250 students graduated with a specialisation in these subjects.

RESEARCH

Research is primarily carried out within the humanities and social sciences, and focuses on inequalities in health and the labour market, and on different conditions for minorities. Projects on AI and digitalisation have also been added during the year. The research cluster *AI Futures of Culture and Memory studies* AI's integration into cultural life and the importance of it being ethical, inclusive and sustainable. Researchers also investigate issues such as transparency in AI development, dealing with bias and representing diverse voices. Additionally, research is being carried out within the humanities, with one project investigating how digitalisation affects the Church of Sweden's work. The aim is to gain a better understanding of what happens when people interact with the church organisation as more and more encounters take place via digital channels and platforms.



Photo: Nicke Johansson.

“During the year, for example, teaching staff have been trained to create safe and inclusive environments for students with neurodevelopmental diagnoses.”

OTHER ACTIVITIES

The university works actively for equal rights and opportunities for everyone, and to combat all forms of discrimination at all organisational levels. During the year, for example, teaching staff have been trained to create safe and inclusive environments for students with neurodevelopmental diagnoses. Several faculties have worked with *Sustainable introduction of new students*, which includes the working environment and equal opportunities. Together with the student unions, the University arranges orientation training every autumn to ensure that new students are welcomed with respect, happiness, security and a sense of community. Autumn 2025 included a special focus on preventing sexual harassment, and a workshop on civil courage.

REFLECTION

The scope of research of relevance to the goal is relatively large in relation to other sustainability research, and the impact has increased slightly compared with the previous measurement period. Issues relating to equality are a cross-cutting perspective in courses and study programmes, and the University works actively with equality issues within its own organisation. However, continued efforts are needed to ensure that this permeates the entire organisation.



Photo: Fredrik Larsson.

PUBLICATIONS

420

FWCI

1.91



Pride on Campus

Pride on Campus was established during the year, and for one week the University – together with several other actors – arranged talks and workshops with the aim of increasing knowledge about, and commitment to, everyone’s equal value. The talks dealt with minority stress and minority joy among transgender people, good working environments for LGBTQ+ people and challenging heteronormativity. There were also social activities, and the week concluded with the University’s official participation in Umeå’s pride parade, under the banner ‘*For everyone’s equal value*’.



SDG 11 Sustainable cities and communities

Cities and communities must be inclusive, safe, resilient and sustainable. They must also grow in an ecologically, economically and socially sustainable manner. Umeå University educates, carries out research and collaborates for sustainable cities and neighbourhoods, and works to ensure that its campus areas are sustainable from a climate and resource perspective, while also promoting sustainable working and student life.

EDUCATION

Education of relevance to this goal takes place at all faculties. The *Planning for Sustainable Communities* course introduces students to this topic, with a focus on climate, justice and social sustainability. Students learn to analyse how housing, mobility, energy, consumption and quality of life affect the transition, and how planning can reinforce resilient and fair communities. The *Architecture Programme* and the *Master's Programme in Architecture and Urban Design* are highly relevant to this goal. Through these programmes, students learn to use critical thinking to develop new perspectives, architectural proposals, strategies and methods for societal and urban development. In 2025, around 200 students graduated with a specialisation in art, design or architecture.

RESEARCH

Research is carried out within all disciplines. There is a focus on air pollution, particles, noise, smart cities and the housing market. The *One foot here, one foot there* and *The significance of the invisible population* projects study how holiday homes and temporary accommodation affect societal planning and mobility. By highlighting the 'invisible population' that is not captured in official statistics, the projects illustrate how temporary stays shape development and resilience in smaller communities. A project within the humanities has examined the media's portrayal of the green transition, in which industrial initiatives are often depicted as being self-evident, while critical perspectives are rarely

highlighted. A narrow media image risks limiting democratic participation and hindering broad, inclusive discussions on how the transition should be implemented in order to be inclusive and socially sustainable. The *Bauhaus Goes North* project is developing methods for participatory and inclusive co-creation that supports the transition to a circular and resource-efficient economy in Nordic and Arctic regions.

COLLABORATION

In a preliminary study linked to the *Mötesplats Stöcke community and activity facility*, researchers at Umeå School of Architecture - working together with local actors - have developed models to strengthen the resilience of rural areas. These models show how a circular food and water supply can work, and outline a resilience hub where preparedness is built into everyday life. They can be adapted for other locations, and describe how the pilot facility can be used for cultivation, processing, storage and water management.

OTHER ACTIVITIES

Sustainable travel and resource-efficient use of premises are key aspects of the university's sustainability work. In 2025, the number of flights taken was roughly the same as in 2022, 2023 and 2024, corresponding to two-thirds of the number in 2019. Several departments began to analyse their use of premises during the year. One department that has worked with this during the year was able to reduce its rented space by 270 m². The department has

now introduced a flexible booking system to enable staff to reserve workspaces as needed, instead of each employee having their own office. This will also result in reduced resource consumption and lower rental costs.

REFLECTION

The scope and impact of research is comparable to previous measurement periods. A large part of the university's collaboration is relevant to the goal. Given the complexity of today's challenges, preparedness and concerted efforts are needed for continued work towards sustainability on all fronts. Use

of premises and business travel by air still account for a high proportion of the University's emissions with an impact on the climate, and ongoing efforts are needed.



Creative solutions for increased sustainability

Every year, the *Master's Programme in Environmental Science and Sustainability* includes student projects with the University's sustainability function in order to contribute towards the work to achieve *A sustainable, healthy campus*. In 2025, the students' solutions involved allowing green spaces to be managed more naturally in order to increase biodiversity, smarter use of premises via an app for booking group rooms, and various measures for energy efficiency, renovation and increased knowledge about sustainability among students in order to reduce climate impact from buildings.



Photo: Mattias Pettersson.



SDG 12 Responsible consumption and production

Sustainable consumption and production of goods and services is essential in order to reduce negative impacts on the environment, climate and human health. Umeå University carries out education, research and collaboration on topics such as sustainable consumption patterns. The University also imposes environmental and sustainability requirements in connection with procurement and purchasing.

Photo: Anna-Karin Eriksson.



EDUCATION

Relevant education includes the *Master's Programme in Public Procurement*, which started in 2025. The programme combines law, economics and digitalisation to show how procurement processes can contribute towards resource efficiency, sustainable business models and responsible use of public funds. The programme strengthens competence within a growing sector where sustainable procurement strategies are central.

RESEARCH

Research is primarily carried out from natural science and social science perspectives, and addresses alternative agriculture, forest management, sustainable consumption patterns and circularity. One project involves investigating how the dairy industry can more easily detect and prevent bacteria in the production line without using unnecessary chemicals, and how it can avoid unnecessary waste and disease. Research is also carried out within the humanities and nutritional science, and the *Inventory management in a green restaurant industry* project investigates how restaurants can use traditional food preservation methods and long-term food storage to reduce their reliance on fresh produce all year round.

COLLABORATION

Collaboration takes place with partners such as *Umeå Eco Industrial Park*, where the vision is to transform the Dåva industrial area near Umeå into a world-leading centre for green innovation and production within environmental technology, recycling



“Collaboration takes place with Umeå Eco Industrial Park, where the vision is to transform the Dåva industrial area near Umeå into a world-leading centre for green innovation and production within environmental technology, recycling and energy.”

and energy. *Industrial symbiosis* will be developed within this field, whereby companies, academia and the public sector will collaborate to develop solutions in which waste and residual products from one operation become resources in another. During the year, the *Umeå Transformation Research Initiative (UTRI)* also supported a theme day on *Re-using IT equipment*. The day, which was part of the *Cirkulära Västerbotten* project, included a talk by researchers from the university about sustainable consumption behaviours.

OTHER ACTIVITIES

In 2025, the University imposed environmental requirements in 36 out of 37 procurement processes. The proportion was lower for purchases, and in terms of the economic value of procurements and purchases, environmental requirements were imposed in 88 per cent of the total value. The University's second-hand furniture store was also digitalised in 2025. Reuse via the second-hand furniture store is popular, and the circulation of furniture and furnishings reduced the University's CO2 emissions by more than 40 tonnes compared with new purchases. In order to encourage circular consumption patterns, Umeå Student Union arranges an annual campus flea market that attracts both students and

the public. At the Department of Food, Nutrition and Culinary Science, only vegetarian options are served at meetings, and use is made of leftover food and ingredients after teaching to avoid waste.

REFLECTION

Research covers a range of different perspectives, and both its impact and its scope have increased compared with previous measurement periods. Relevant education has been strengthened, including via the new programme in public procurement. In terms of other activities, the improved procedures for setting environmental and sustainability requirements in procurement have had an impact, but ongoing efforts are needed to ensure that a higher proportion of purchases are made with consideration for the environment and other sustainability aspects.

PUBLICATIONS

328

FWCI

2.19



SDG 13 Climate action

Immediate and powerful actions need to be taken to limit climate change and its consequences. Umeå University carries out research, collaboration and education relating to climate change. The University also carries out activities in partnership with other actors to contribute towards Umeå's climate transition.

EDUCATION

Education takes place at all faculties, and climate change, its history, its consequences and solutions are studied from many different perspectives within the University. On *the Bachelor of Science in Biology and Earthscience programme*, students learn about how our planet works and society's challenges in connection with the environment, biodiversity and climate. On the *Health, Environment and Sustainability* course, students learn about the effects of climate change on health and the environment. More specifically, the course aims to deepen students' understanding of how health interacts with globalisation and environmental and climate change, and how sustainable solutions can be developed at local and global levels to meet the challenges of the future.

“The seminar emphasised that nature and people are interconnected, and that indigenous peoples’ knowledge about and management of their lands are central to promoting sustainability and preserving ecosystems and biodiversity.”

RESEARCH

Research is both extensive and broad. There is a particular focus on studies relating to greenhouse gases, policies and reindeer husbandry, as well as climate adaptation. The *Northern Buildings in Changing Climate* project develops recommendations and guidelines for sustainable climate adaptation for buildings in different climate zones whose energy needs and materials are affected in different ways by fluctuating temperatures, wind and precipitation. Another study investigates how people in different European countries want climate change to be dealt with and which types of climate policies attract the most support. The study involves researchers going into greater depth to improve our understanding of why certain climate measures are perceived as more attractive or controversial, and how countries can develop climate strategies that are both socially and politically sustainable over time. In addition, the UTRI Young Researcher Network organised a seminar on how land use, politics and climate change affect the Sámi people in Sweden. The seminar emphasised that nature and people are interconnected, and that indigenous peoples' knowledge about and management of their lands are central to promoting sustainability and preserving ecosystems and biodiversity.

COLLABORATION

In 2025, the University participated in the Umeå Climate Roadmap and Climate Neutral Umeå 2030, and in the Higher Education Institutions' Climate Network. This involved contributing knowledge to accelerate the transition, both locally within Umeå municipality and among higher education institutions nationally. During the year, the *European Polar*



Board (EPB) and the European Polar Coordination Office (EPCO) also moved their headquarters from the Netherlands to Umeå University. This has strengthened the foundation for Sweden's Arctic research coordination and regional policy development by creating direct links to the European Commission in Brussels, improving connections with research funders and becoming a stakeholder.

OTHER ACTIVITIES

Various actions are being carried out on an ongoing basis to reduce the climate footprint of Umeå University's operations, and the university's climate report for 2025 showed that emissions have decreased compared with the base year of 2019, from almost 25,000 tonnes of CO2 equivalents in 2019 to just under 18,000 tonnes in 2025.

REFLECTION

Research is extensive, but is at roughly the same level and with the same impact as in previous years. Within both education and collaboration, climate change is no longer addressed only from natural science and social science perspectives, but also from medical and humanistic perspectives. The University is working to reduce its climate footprint and the reduction achieved to date is positive, but the rate of reduction is too slow and the University's overall climate budget has been exceeded. Much remains to be done if the goal of one tonne of CO2 emissions per person is to be achieved by 2045.

PUBLICATIONS

484

FWCI

2.4



Artistic and humanistic perspectives on climate change

On the *Art and Climate Crisis* course, students explore and analyse art's relationship with the climate crisis and climate change from artistic and humanistic perspectives. The aim is to equip participants with the tools needed to critically examine and investigate how climate and environmental issues are addressed within art and exhibitions.



SDG 14 Life below water

The oceans and marine resources must be preserved and used in a sustainable manner. Umeå University contributes towards this goal through research on water in various ecosystems and by disseminating knowledge about the status of the oceans and the changes taking place in them.

EDUCATION

Relevant education takes place within the natural sciences. On the *Earth Science* course, geoscience and geography students can deepen their knowledge about the occurrence and dynamics of water, and methods to analyse water flows and hydrological processes in soil, lakes and oceans. The course contributes towards an understanding of sustainable water resource management and marine processes. The *Anthropogenic Environmental Impact* course deals with the impact of human activities on soil, water, air and organisms, linking human environmental impact to relevant national environmental quality targets and the global SDGs. After completing the course, students should be able to describe how pollution spreads within the environment, explain its causes and effects, and describe disrupted natural cycles.

RESEARCH

Research is dominated by natural science studies, and concerns eutrophication, coralline algae, marine ecosystem preservation and blue carbon storage. Major resources include Umeå Marine Sciences Centre (UMF) in Norrbyn and the *Eco-Change* strategic initiative. Studied issues include the eutrophication of the Baltic Sea and its northern part, the Gulf of Bothnia, which has thus far been spared. However, recent findings indicate that the Gulf of Bothnia appears to be heading towards eutrophication, with researchers noting that analysing many years of monitoring data shows that phosphorus levels are rising, the nitrogen-to-phosphorus ratio is decreasing, and cyanobacterial blooms are increasing.



Photo: Joakim Ahlgren.



Photo: Martina Jeunhe.

COLLABORATION

From 2025 onwards, UMF will be one of the partners in *AQUASERV*, a network of six European research infrastructures that brings together 40 scientific partners within research and innovation for sustainable aquaculture, fisheries and the blue economy. By providing access to high-tech laboratory infrastructure, either on site or remotely, *AQUASERV* can promote and facilitate the implementation of the EU's Common Fisheries Policy, the Farm to Fork strategy, the sustainable blue economy and the European Green Deal.

OTHER ACTIVITIES

The university does not have its own targets for contributing towards the protection of the world's oceans. However, it does provide information for employees on how to deal with liquid waste from laboratories and which residues may or may not be disposed of via wastewater. Oil and grease separators are also installed in drains at relevant locations.

REFLECTION

The scope of research is limited, but has increased compared with previous measurement periods. This also applies to the impact of the research. The connection to and development of the *AQUASERV* research infrastructure bodes well for continued excellent marine research. When it comes to collaboration, there are several good initiatives and the university is now one of Sweden's leading voices in terms of marine knowledge, particularly within the framework of the Swedish Institute for the Marine Environment. Relevant education and other activities remain limited and inadequate.

PUBLICATIONS

132

FWCI

2.4



Facts and research about the oceans are made available to everyone

The havet.nu platform brings together news, research and facts about the ocean and marine issues so that readily accessible knowledge can be disseminated. It includes information about the state of the oceans and their species, the impact of climate change on the oceans, and fishing. The website can be used by everyone, including schools and the general public. The information is provided by the Swedish Institute for the Marine Environment, which includes Umeå University together with Stockholm University, the University of Gothenburg and the Swedish University of Agricultural Sciences. As part of this collaboration, the magazine *Havsutsikt* is published twice a year. The magazine describes Swedish marine research and marine resources. It is aimed at a broad target group, and many of its subscribers are schools. It is also read by professionals working with marine issues at universities, public authorities and ministries.



SDG 15 Life on land

The goal involves protecting, restoring and promoting the sustainable use of ecosystems on land, managing forests sustainably, slowing desertification and halting biodiversity loss. At Umeå University, this work is carried out through education, research and collaboration on forest ecosystems. Campus Umeå is also home to an arboretum.

EDUCATION

On the *Master's Programme in Ecology*, students study in greater depth how fishing, forestry, hydropower expansion, environmental pollution and global climate changes affect biodiversity and ecosystems in forests, lakes, mountains and oceans. They also learn to identify and define ecological problems, and to plan studies and analyses in nature. During the year, 80 students graduated with a specialisation in biology, ecology, the environment or nature conservation. On the *Collaborative Environmental Governance in the Arctic* course, students learn from a public administration perspective how global environmental changes, international conventions and European environmental policy are linked to environmental policy formulation and its implementation within various sectors.

RESEARCH

Research primarily relates to natural science and social science perspectives, as well as the humanities. There is a focus on forestry, ecosystem services and sustainable management of natural resources.

“The seminar highlighted aspects including a fair transition, where healthy ecosystems are viewed as our protection against climate disasters.”

A recent study shows that European forestry is increasingly shifting towards nature conservation and participation, where wood extraction is carefully balanced against forest regrowth. Research is also carried out from an artistic perspective. In a project combining art and science, installations and living artworks have been used to explore different ways of listening to, caring for and coexisting with trees. The project aimed to ‘open up new spaces’ to address the climate crisis, industrialisation and colonialism, while at the same time reformulating reforestation as a cultural and relational practice. Other studies address indigenous peoples’ perspectives on land use, where cultural values and cultural remains in nature reserves are studied to strengthen biodiversity conservation.

COLLABORATION

The Urban Forests series of seminars was held within the *Future Forests* platform. The seminars, which were aimed at both the general public and professionals, brought together researchers and other social actors to talk about, discuss and highlight the impact of urbanisation on forests and green spaces. During the year, the Umeå Transformation Research Initiative (UTRI) supported several seminars linked to this goal. In January, the Swedish Society for Nature Conservation was invited to join researchers to discuss how we can make use of nature’s resources while also conserving them. The seminar highlighted aspects including a fair transition, where healthy ecosystems are viewed as our protection against climate disasters.

OTHER ACTIVITIES

During the year, the university collaborated with Akademiska Hus and students from the Department of Ecology, Environment and Geoscience (EMG) on activities that can increase biodiversity in outdoor spaces. A natural value inventory was also carried out, and students conducted field studies on the status of the Sandbäcken stream and the Campus Pond. Activities have also been carried out to increase interest in and knowledge about biodiversity and effective ecosystems. The popular Nature on Campus concept has continued, and on *Biodiversity Day* students arranged a quiz with questions about biodiversity. Staff and students were also able to participate in the *Biodiversity Challenge*, organised by the Swedish University of Agricultural Sciences, in which they reported species found at Campus Umeå on specific dates.

REFLECTION

The scope of research has increased compared with previous years. The importance of preserving and increasing biodiversity in different ecosystems is receiving more and more attention, both locally and globally, and there are a number of unanswered research questions and a need for competence within the field. Within education, biodiversity issues are being highlighted as significant from a growing number of perspectives. There is considerable interest in other activities, and efforts to promote this goal are likely to increase in the future.

PUBLICATIONS

318

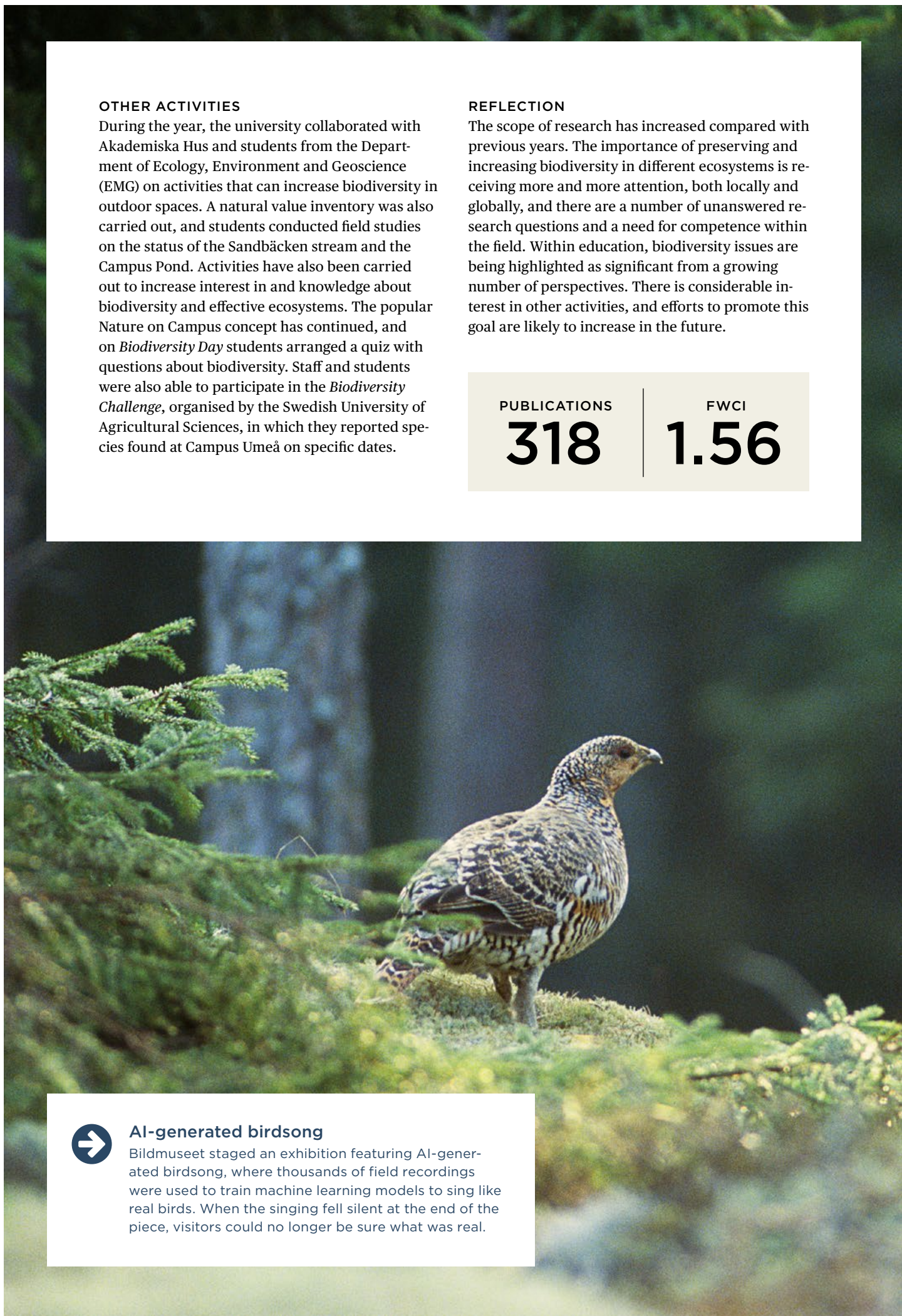
FWCI

1.56



AI-generated birdsong

Bildmuseet staged an exhibition featuring AI-generated birdsong, where thousands of field recordings were used to train machine learning models to sing like real birds. When the singing fell silent at the end of the piece, visitors could no longer be sure what was real.





SDG 16 Peace, justice and strong institutions

Achieving sustainable development requires peaceful and inclusive societies that are also fair for everyone. In order to contribute towards this goal, Umeå University has determined that academic freedom, autonomy and student influence are central.

EDUCATION

Relevant education takes place within a number of disciplines. On the *Programme for International Crisis and Conflict Management* and the *Master's Programme in Crisis Management and Peace-building*, students learn how we can strengthen society's capacity in the event of crises, prevent and manage them, and rebuild after crises and disasters. On the *Master's Programme in Critical Perspectives on the Economy: Environment, Inequality and Crises*, students deepen their knowledge about how societies and economies develop, change and end up in crisis from a historical perspective. Education is also provided in police science, medicine and the humanities.

RESEARCH

Research is broad, and highlights aspects such as economic and social development, intimate partner violence, and human rights with a focus on minority groups. Police science was established as a new research subject during the year, and the University is currently the only higher education institution in the Nordic region to offer this. Within this field, studies address issues such as public power and the authorities granted to actors in order to create security in society and to achieve order and safety. Studies relate to both public and private actors, such as the Swedish Police Authority, Swedish Customs, the Swedish Economic Crime Authority and companies within the security industry. At *Vårdduo*, the University's centre for Sámi research, studies on indigenous peoples are carried out through close collaboration between research and civil society, and with actors within the Sámi community, both in Sweden and in other countries.

COLLABORATION

The University carries out various activities to promote the dissemination of knowledge about inclusive and peaceful societies. In 2025, representatives from natural sciences subjects welcomed a group of Ukrainian doctoral students and young researchers. The visit took place within the framework of the *Ukraine Natural Science Talent Empowerment (UNSTE)* project, and aimed to showcase and allow the doctoral students and researchers to take part in the research infrastructure at the University and to inspire others, with the opportunity to establish contacts for future international collaboration or employment opportunities. Researchers from the University are also participating in the *SALTO Participation & Information project*. The project aims to support educators, teachers, youth leaders and managers by giving them free access to the best and most up-to-date online tools. Within the project, a platform containing information and digital tools has been created to give teachers, educators and others access to the latest information and various digital tools that can help to enhance young people's

“Police science was established as a new research subject during the year, and Umeå University is currently the only higher education institution in the Nordic region to offer this.”



active participation in democratic processes. The work carried out via *SALTO* also forms the basis for a report to the Council of Europe with guidelines for how educational environments can integrate democratic participation and critical thinking.

OTHER ACTIVITIES

Effective student influence is central to ensuring that the student perspective is included when developing the university's activities. In the Student Union Report 2025, the University's three student unions summarise existing problems and proposed measures. For example, the student unions propose that the University should draw up an action plan for mental health and guidelines for dealing with conflicts in student groups with a focus on a simpler and clearer process, in accordance with a previous investigation. The student unions also propose that the pricing of premises should be adjusted so that they can book premises free of charge. During the year, a researcher at Umeå University was appointed as a member of the board of the *Swedish Institute for Human Rights*, which is tasked with protecting and promoting human rights in Sweden.

REFLECTION

Research in connection with this goal has increased in scope in recent years. Its impact has decreased compared with previous years, but remains relatively strong. In terms of education, a wide range of relevant courses are offered. However, justice and inclusion are perspectives that could be further strengthened in both research and education, in view of how central they are to achieving sustainable development for all. Collaboration takes place both nationally and internationally. The University has an effective system in place for including students' perspectives, but initiatives are required if it is to continue to meet students' needs in the future.

PUBLICATIONS

415

FWCI

2.73



Academic core values take shape

During the year, the University's values were concretised in three academic core values: academic freedom, academic collegiality and academic integrity. These values are central, and can be said to form the basis for the University's ability to carry out its work and assignments with quality and credibility.



SDG 17 Partnerships for the goals

The global goals can only be achieved through global partnership and co-operation. The implementation of the goals often takes place locally, but requires global solidarity, capacity building and the mobilisation of financial resources to ensure that no country or group is left behind in the development. Umeå University can contribute many different perspectives within the necessary transition.

Umeå University can contribute towards the global goals in many different ways. It can do so via its core activities of education, research and collaboration, but also by taking action and making sustainable choices itself. Under this goal, we have chosen to present interdisciplinary approaches, centres and arenas, as well as other overarching factors that can contribute towards the transition that needs to be accelerated.

INTERDISCIPLINARY APPROACHES

Sustainability researchers from different faculties come together in the *Umeå Transformation Research Initiative (UTRI)*. The network aims to promote innovative multidisciplinary and interdisciplinary research on sustainable transition, encourage scientific debate and new collaborations, and contribute towards dealing with conflicting goals and synergies in environmental objectives. The network will also help to ensure the quality of research, and to solve local and global societal challenges. During 2025, UTRI supported and arranged around 20 different events, and held its second research conference on the theme *'Dealing with the polycrisis'* in November. The conference aimed to highlight contemporary polycrises and raise awareness of academia's responsibility to contribute knowledge, critical perspectives and solutions. Interdisciplinary dialogue strengthened attendees' understanding of complex societal changes and crisis management.

UTRI Young Researcher Network (YRN) is an offshoot from UTRI that is specifically aimed at young researchers at Umeå University who are at the beginning of their research careers. The objective

is to create a place where young researchers can establish contacts, and to promote opportunities for the future.

The Association of Polar Early Career Scientists Sweden (APECS Sweden) is an organisation for young researchers who carry out interdisciplinary research related to the Arctic and the Antarctic. The organisation was first established in 2016, but its operations were paused during the Covid-19 pandemic. Since 2024, the organisation has been re-established and held its first conference in Umeå in September, with around 40 young researchers and students attending.

RESEARCH CENTRES

Research centres at the University are important platforms for collaboration across subject and faculty borders. By bringing together researchers with different competences, the ideal conditions are created for multidisciplinary and interdisciplinary research that can address complex societal challenges. In their work with sustainable societal transition, these research centres often play an important role by contributing towards the development of integrated solutions that support long-term sustainable development at local, national and global levels. Research centres at the University that make significant contributions to the implementation of the global SDGs are presented below.

Arctic Centre brings together and strengthens the extensive network of Arctic researchers at Umeå University with support functions, coordination and



an overall strategic focus. To date, more than 200 researchers have joined the research centre, which also runs a research school with a focus on sustainable development.

Vårdduo is Sweden's only centre for Sámi research. The centre works together with Sámi actors, organisations and communities to develop and disseminate research-based knowledge about Sámi issues.

The Climate Impact Research Centre (CIRC) operates at Abisko Scientific Research Station. Its research focuses on Arctic and alpine ecosystems, and how they are affected by environmental and climate change. The centre also disseminates knowledge about climate change.

The Centre for Transdisciplinary AI (TAIGA) brings together researchers, teaching staff and students from across the university, and offers forums, activities and support for developing AI solutions that can benefit society.

The Centre for Sustainable Cement and Quicklime Production (CHECK) brings together researchers and players within Swedish industry. The research centre works to improve raw materials and fuels, optimise existing facilities, and devise new technological concepts for the production of cement clinker and quicklime.

The Centre for Environmental and Resource Economics (CERE) unites researchers within environmental and natural resource economics from Umeå University and the Swedish University of Agricultural Sciences. The centre arranges regular seminars and develops

decision-making support tools that can accelerate the transition towards a sustainable society.

The Centre for Regional Science (CERUM) has a specific mission to analyse developments in northern Sweden and northern Europe. It carries out research assignments, arranges seminars and runs collaborative projects such as Urban Transition Lab, where academia and municipalities work together to investigate issues relating to urban development.

Umeå Centre for Gender Studies (UCGS) brings together researchers with different perspectives on gender research. The centre carries out research, provides education and contributes towards the development of urban environments where gender equality and security are features of everyday life.

Umeå Plant Science Centre (UPSC) unites around 200 researchers and focuses on plant research and forest biotechnology, including everything from how plants function at molecular level to how they can adapt in a changing environment.

Umeå Marine Sciences Centre (UMF) has a specific focus on challenges linked to climate change and the sustainable use of marine resources. UMF has broad societal engagement through its research, and also carries out environmental monitoring.

The European CBRNE Center aims to strengthen society's preparedness, via collaborative projects and direct cooperation with public authorities and first responders. The centre initiates and contributes towards interdisciplinary research, and develops and carries out educational initiatives.



INTERDISCIPLINARY ARENAS

Interdisciplinary arenas can also play an important role in the transition towards sustainable development. By bringing together researchers, students and actors within society, a consensus and good conditions for knowledge exchange are created to tackle complex societal challenges together. The university arranges various annual forums to promote this. A selection of such events during 2025 is presented below.

To launch Västerbotten Sustainability Week, the University - together with Umeå municipality, Västerbotten County Administrative Board, Esam and Blå Huset - took the initiative to bring together public and private sector actors for a conference on the theme of *A vibrant and sustainable city*. The event was part of a local hub within the Nordic digilog conference *A Sustainable Tomorrow*, which drew more than 30,000 Nordic participants and aimed to strengthen collaboration on a local sustainable transition through dialogue, inspiration and concrete tools. The day included both local discussions and international perspectives on courage, diversity and inclusion. It resulted in greater consensus on the objectives for a climate-neutral and inclusive city, as well as a clear commitment to translate long-term goals into action here and now.

Against a backdrop of war, superpower rivalry, climate change and economic uncertainty, the University hosted *Perspectives - Geopolitical and Economic Uncertainty* in November. The annual forum brings together researchers, decision-makers, public authorities, the business community and civil society for lectures, panel discussions and exchanges of experience. The 2025 event focused on crisis preparedness, collaboration and different perspectives on contemporary challenges.

Strengthening the Social Innovation Ecosystem in the North is an annual forum that invites researchers, civil society, municipalities, cultural actors and businesses to explore how social innovation can contribute towards sustainable change in Västerbotten and Norrbotten. The 2025 event was arranged by the Forum for Social Innovation Sweden at Umeå University and Luleå University of Technology, as well as Coompanion Västerbotten, and resulted in a clear deepening of the understanding of social innovation as a concrete tool for societal change, rather than a complement alongside other developments. Meetings between researchers, civil society, municipalities, cultural actors and businesses highlighted how locally supported initiatives can be scaled up, collaborate and contribute towards long-term system changes.

The Forum for the Arctic and Antarctic took place in November, bringing together researchers, public authorities and other actors in Stockholm to discuss future needs and focuses for Swedish polar research. The forum was arranged by the *Swedish Centre for the Arctic and Antarctic (SCAA)* in cooperation with the *Swedish Polar Research Secretariat*. The aim was to strengthen collaboration, particularly between generations of researchers, and to coordinate efforts within an increasingly interdisciplinary research field. It resulted in deepened networks, strengthened national coordination and a common direction for how Swedish polar research can address climate change, geopolitical uncertainty and global sustainability challenges.

INTERNATIONAL ALLIANCES

International university alliances are long-term collaborations between higher education institutions that strengthen interdisciplinarity, mobility and joint knowledge development. By coordinating resources and competences, better conditions can be created to address global societal challenges and promote sustainable development.

The European Campus of City-Universities (EC2U) is a university alliance between nine European universities and associated partners, and involves

collaboration within education, research, campus development, student life and sustainability. In autumn 2025, a *think tank* was held at the university on the *theme of equitable and universal access to education*. The focus was on digital inclusion and linguistic and cultural competences, with the aim of drawing up sustainable solutions, strengthening collaboration and contributing policy recommendations. The discussions resulted in shared insights into how inclusive digital learning environments can be developed and how language and culture can strengthen participation in education. The results will be forwarded to the *EC2U Forum 2026* and the European education dialogue.

The Arctic Six is a strategic alliance between six Nordic universities, with the aim of strengthening research, education and collaboration in the Arctic. Alongside Umeå University, Luleå University of Technology, Nord University in Norway, UiT - The Arctic University of Norway, Finland's University of Lapland and the University of Oulu are also members of the alliance. Through this initiative, the universities have deepened their academic exchanges and laid the foundations for new projects and partnerships. For Umeå University, the initiative has strengthened its Arctic profile, increased its access to international networks and created better conditions for interdisciplinary research within areas such as health, indigenous studies, education and governance.

Collaboration that promotes the global SDGs also takes place within *Academic Collaboration*

Chile Sweden (ACCESS 3.0, a network of Swedish and Chilean universities), *MIRAI*, which aims to strengthen academic collaboration within education, research and innovation between Swedish and Japanese universities, the *South Africa-Sweden University Forum (SASUF)*, in which Swedish and South African universities and other organisations from the two countries participate, and *Sweden Korea Education, Research, and Innovation Collaboration (SKERIC)*.

A SUSTAINABLE, HEALTHY CAMPUS

At Umeå University, work for health and work for sustainability go hand in hand, for a sustainable working and student life as well as for a healthy planet. Based on the Higher Education Act, the Environmental Management in State Agencies Ordinance, the Climate Framework for Higher Education Institutions and the intentions of Healthy Campus, the University has drawn up objectives and frameworks for work to promote the global SDGs. This work is broad, and involves many initiatives and activities. During 2025, particular progress has been made in the work for a healthy campus, where the University has achieved the highest level of certification: Platinum. In the *Times Higher Education Impact Ranking* and the *QS Sustainability Ranking*, which assess the University's overall performance in relation to the global SDGs, the University was ranked at roughly the same level in 2025 as in previous years. In both rankings, the University is ranked between 200 and 300 out of more than 2,000 universities worldwide.



Photo: Mattias Pettersson.



UMEÅ UNIVERSITY